

C
o
m
m
u
n
i
t
y

F
a
r
m

Gorse Hill Community Urban Eden

Empowering Communities with Sustainable Design,
Creating Natural Symbiotic Settlements in Cities

In the most vibrant ecological hinterland of Trafford, the Gorse Hill Community Garden is about to be transformed! This project transforms a derelict farmhouse and old facilities into a sustainable living hub with an eco-shop, shared kitchen and open social garden. We aim to say goodbye to a cluttered landscape and usher in a green and creative multi-functional event space!

Join us in igniting a passion for future living and creating a new community that is environmentally friendly and full of creativity!

G
r
e
e
n

M
a
r
k
e
t

Visit msa.ac.uk for more information



Team

Xue bingqing (MA AR)

Zhang ruihan (MA AR)

Zheng yining (MA AR)

Li yufei (MA AR)

Nathan Woods (MArch1)

Benedetta Pozzoli (MArch1)

Harrison Lewis Coyne(BA1)

James Rogers(BA1)

Kimie Boustany (BA1)

Yaken Muammar (BA1)

Anisah Islam Chaudhury (BA2)

Erin Moore (BA2)

Hector Mellor (BA2)

Marie Mamin (BA2)

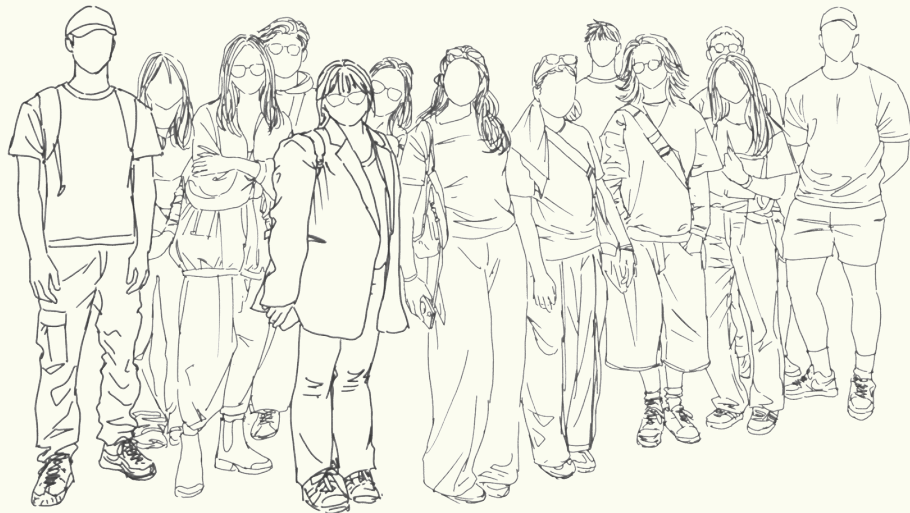
Syed M. Shahzad Hussain (MLA1)

Yu Chenwei (MLA1)

Partners

Gorse Hill is a group of local residents, who are working together to try and improve the local area for all – quite simply to make it gorgeous. Gorse Hill is a suburb of Manchester. Within its boundaries sits Manchester United's football ground and Lancashire County's Cricket Ground. The area sits on the A56 and has approximately 8000 residents.

Gorgeous Gorse Hill is committed to improving the appearance of the local area through art and horticulture and building community through public events. It transforms large areas of wasteland, derelict flowerbeds and lawns into sustainable colourful flower and herb gardens. And the community works with creative artists to add paintings and decorations to Gorse Hill's streets. Meanwhile, Gorse Hill Studios hosts fun fairs and events throughout the year. Each winter, a lantern parade takes place where people walk through the streets carrying beautiful lanterns made by local residents with the help of artists.



Introduction

Gorse Hill Allotment Association

In Trafford's most vibrant ecological hinterland, Gorse Hill Community Vegetable Garden, we are embarking on an exciting new metamorphosis. Once derelict farmhouses and old facilities will be transformed into a creative and vibrant hub of sustainable living under our careful planning. It will incorporate an eco-shop, a shared kitchen and an open social garden, as well as a multi-functional event space with endless possibilities for residents.

Instead of clutter and discarded tables and chairs, the redesigned site will feature a green and vibrant planting area and carefully planned interactive spaces. Imagine a Gorse Hill of the future: a bustling agricultural market, passionate community gatherings, and residents sharing cakes and coffee to experience the pure joy of farming and the beauty of green living.

All these will ignite every resident's passion for the future of life and inspire unlimited creativity and interaction. the magnificent transformation of the Gorse Hill Community Garden will not only be a perfect fusion of ecology and aesthetics, but will also become a shining jewel in the Trafford community, bringing unprecedented excitement and joy. Let's look forward to creating a new community life that is environmentally friendly, creative and full of fun!



SITE VISIT

Site Visit Summary

This project is situated within a small section of the Gorse Hill Community Allotments in Manchester, covering an area of approximately 16,384mm x 7,250mm. Originally serving as a space for residents to cultivate vegetables, the allotment has experienced a degree of neglect in recent years due to population decline and aging infrastructure. The surrounding community predominantly consists of elderly residents and is characterized by a diverse demographic. However, the area's vibrancy has diminished over time. Through discussions with the project's stakeholders, we've learned of their aspiration to revitalize this space, aiming to enhance community engagement, enrich residents' lives, and attract people back to the area.

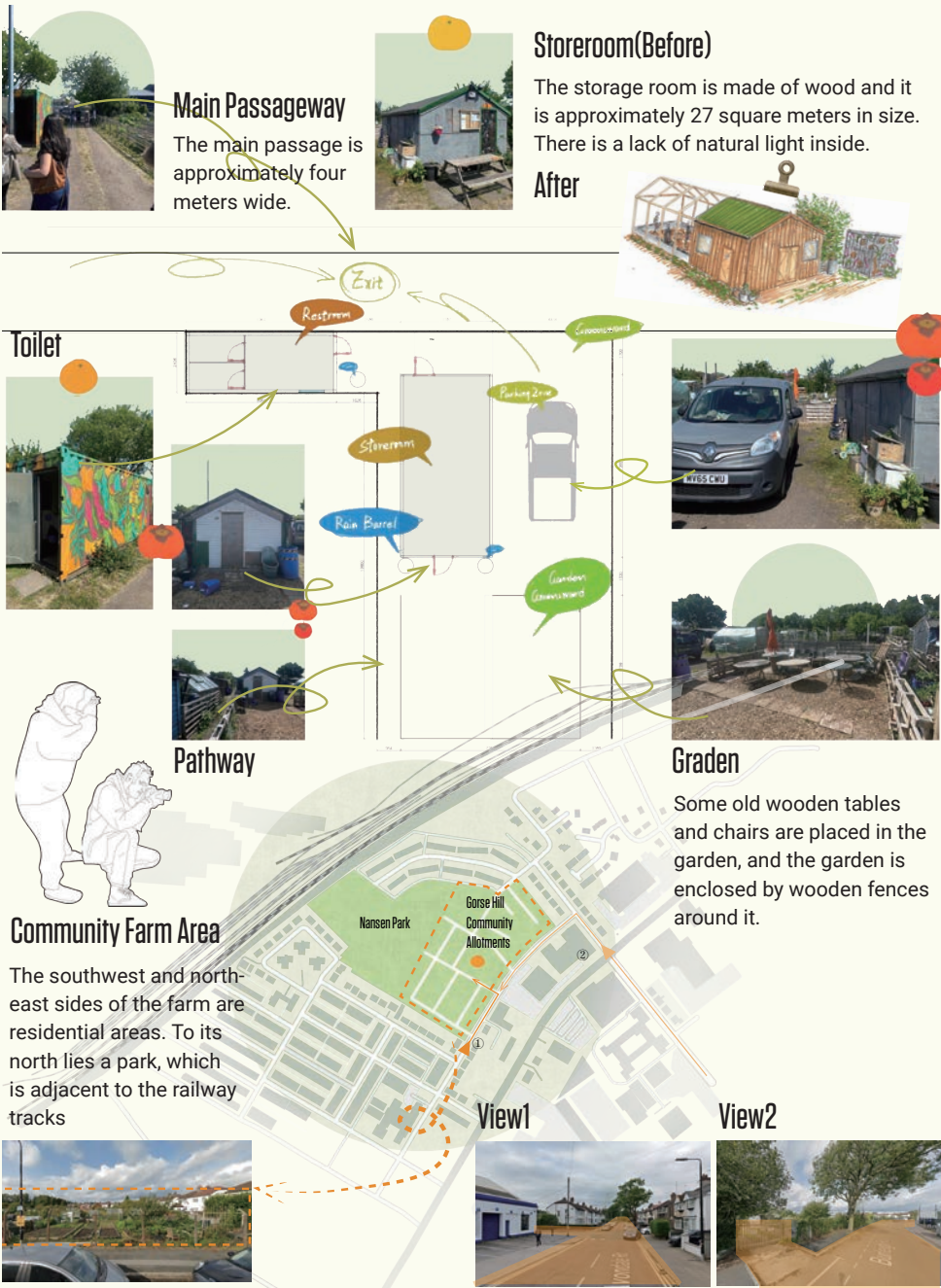
Final Output

This design proposal is an architectural exploration that combines the concepts of outdoor recreation and indoor bazaar, aiming to design an interactive farm space that integrates exhibition, leisure and communication. The design outcome will present the space concept in the form of multiple media, breaking through the single dimension of traditional architectural expression. As the carrier of the core output, the handmade physical model is made of mdf-cut panels, which are disassembled through modular structure to show the internal structure of the building and the outdoor resting area. At the same time, the accompanying design brochure adopts the visual narrative structure of different scenarios to show the indoor, event activities, bazaar and other architectural functions of the building transformation. Scenarios such as removable shelving systems, retractable awnings, and open kitchens are presented through a combination of renderings and hand-drawn drawings.

ACTION PLAN



SITE ANALYSIS

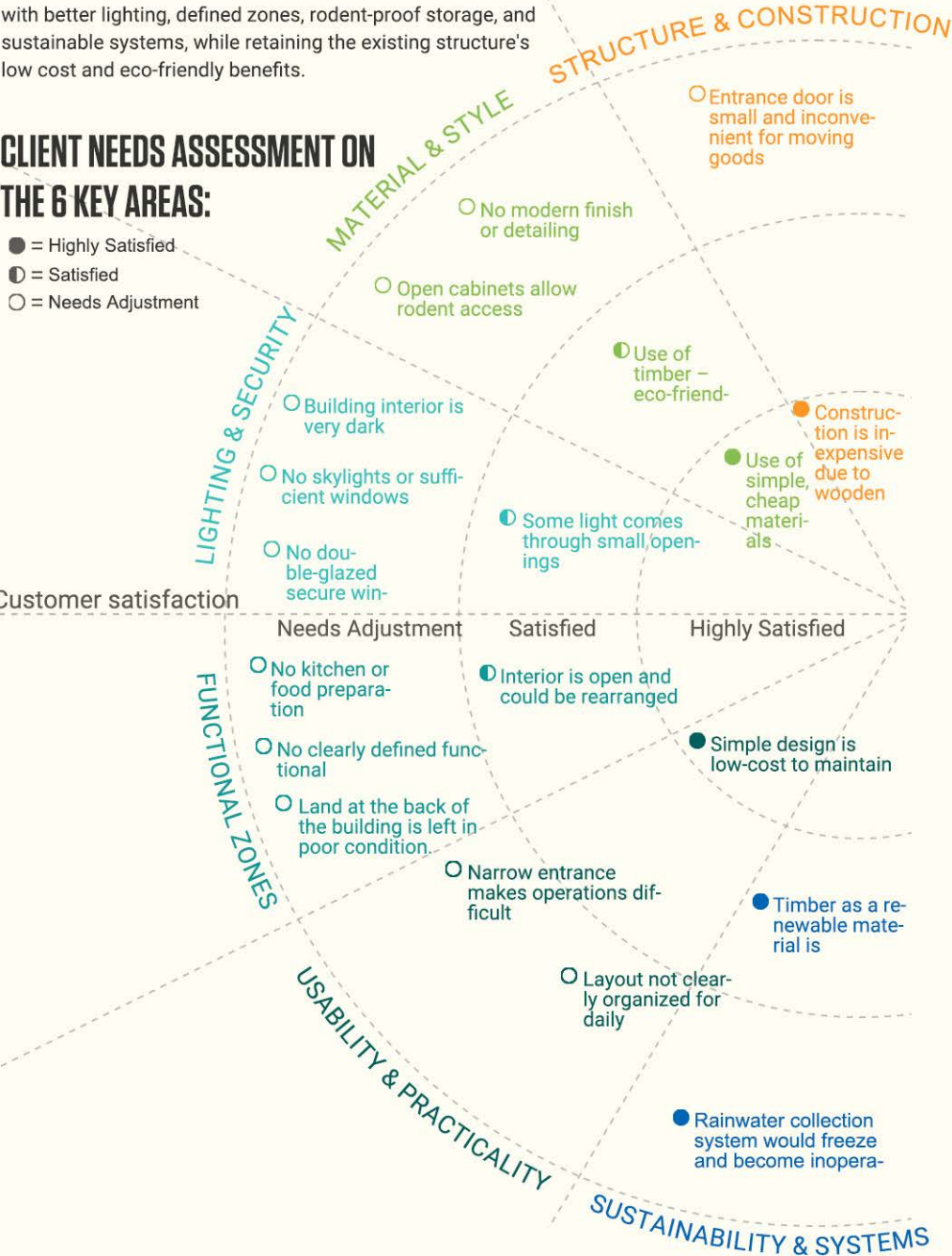


Existing Conditions


The client seeks a modern, functional, and secure building with better lighting, defined zones, rodent-proof storage, and sustainable systems, while retaining the existing structure's low cost and eco-friendly benefits.

CLIENT NEEDS ASSESSMENT ON THE 6 KEY AREAS:


- = Highly Satisfied
- ◐ = Satisfied
- = Needs Adjustment



INITIAL CONCEPTS



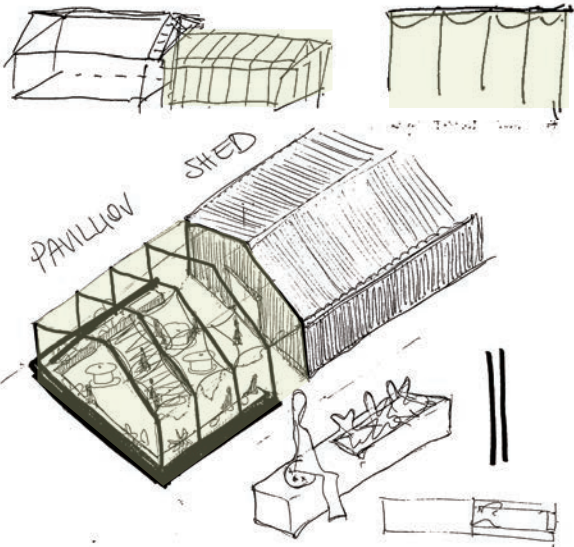
At the beginning of the design process, we were divided into three design teams, each producing design sketches based on different case studies. Finally, all the design sketches will be integrated, and the reasonable and distinctive design elements will be selected.



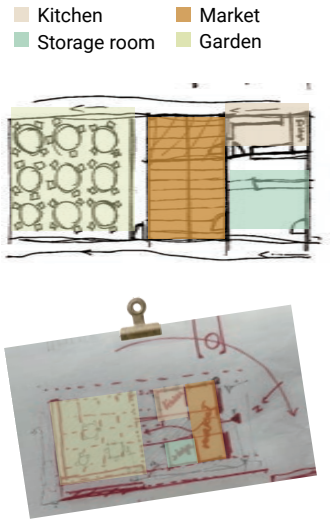
Entrance



Graden



Floor Plan



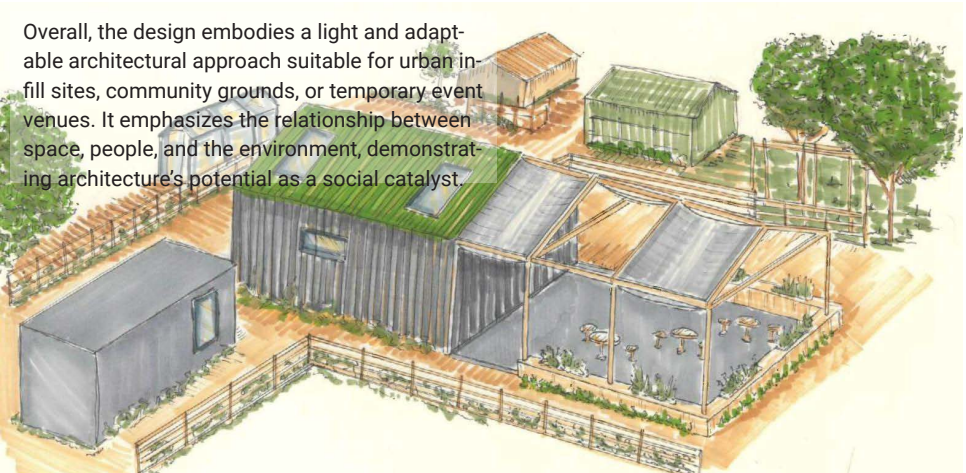


Where do you think is the most distinctive part of your work?

Of course, it's the color!



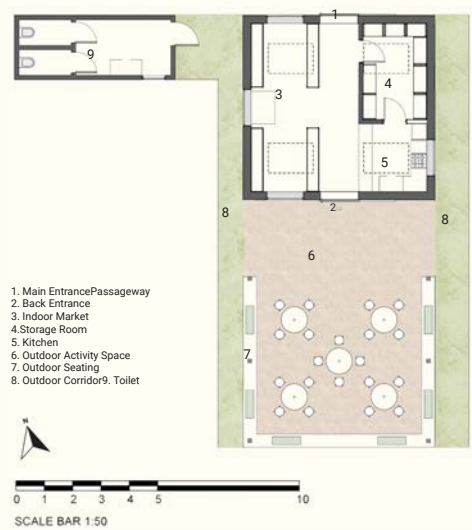
This architectural design explores a hybrid concept of a "Pavilion" and a "Shed," aiming to create a multifunctional space for exhibition, rest, and social interaction. As illustrated in the sketches, the structure consists of three main components: the entrance transition space, the open pavilion core, and the enclosed shed section. The entrance is marked by a pair of open doors, symbolizing invitation and accessibility, guiding visitors into the heart of the structure.



DESIGN PROPOSAL

Our design expands the building to connect with two adjacent roads on the left and right, creating a stronger relationship with the surrounding urban context. At the heart of the structure is a spacious central passage that leads directly to a rear outdoor seating area. We have included a relatively enclosed storage room next to a kitchen, both located opposite an indoor food market where people can buy and sell food. In the rear outdoor space, we introduced a wooden framework inspired by the roofline of the original building. Detachable rain covers will be added to the frame, providing shelter during rainy weather.

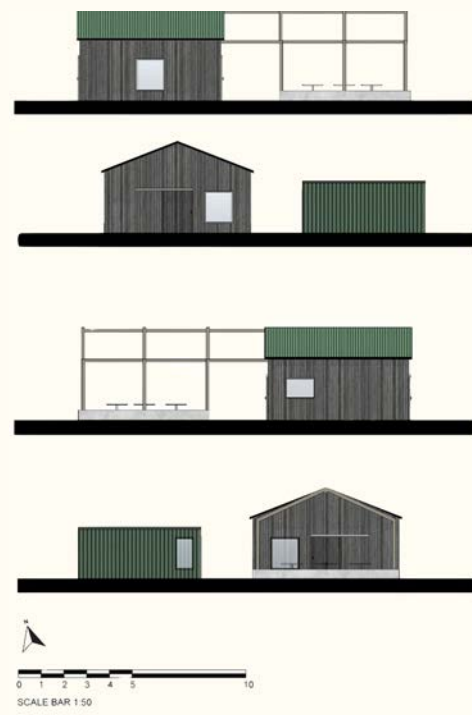
Floor Plan



Elevations with Dimensions



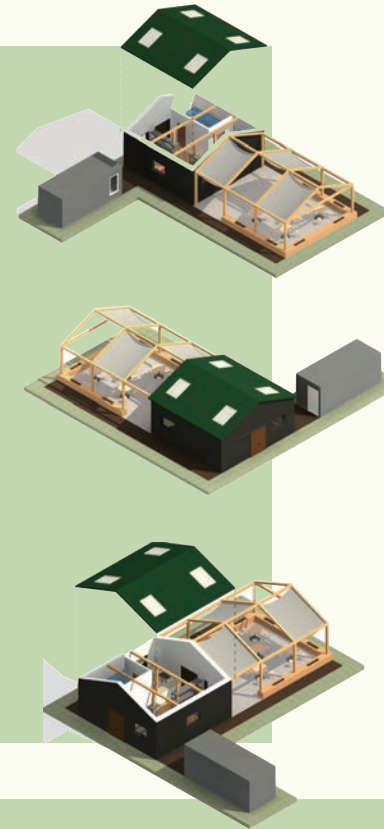
Elevations



Rendering



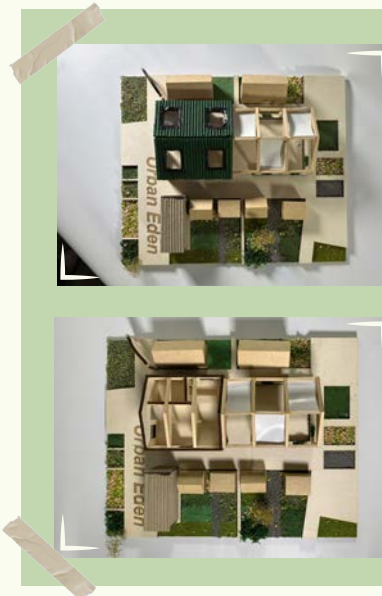
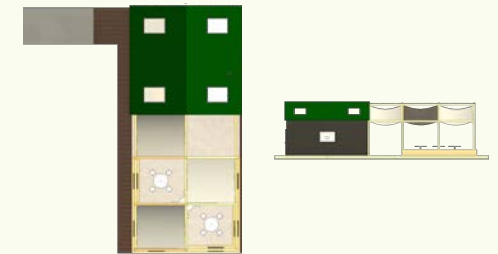
PHYSICAL MODEL



Axonometric View Of The Site

The spatial sequence progresses from open to semi-enclosed and finally enclosed, responding to changes in user flow and activity. The sketches suggest potential interior layouts, including circular seating arrangements and integrated plant installations, which enrich the atmosphere and encourage interaction.

Structurally, the use of steel frames and lightweight panels ensures affordability, modularity, and sustainability.



BROCHURE



Finial Presentation With Employers



ABOUT

Each year the MSA LIVE programme unites Masters Architecture year 1 and Masters of Architecture & Adaptive Resuse students with those in BA year 1 and year 2 and Masters Landscape Architecture 1 in mixed-year teams to undertake live projects with external partners to create social impact.

LIVE PROJECTS

All MSA LIVE projects are live. A live project is where an educational organisation and an external partner develop a brief, timescale, and outcome for their mutual benefit.

SOCIAL IMPACT

All MSA LIVE projects are for community benefit or have social impact. Social impact is the effect an organization's actions have on the well-being of a community. Our agendas are set by our external collaborators.

EXTERNAL PARTNERS

MSA LIVE projects work with many organisations: charities, community groups, social enterprises, community interest companies, researchers, practitioners and educators.

STUDENT-LED

Our MSA masters students take the lead in the project conception, brief development, delivery and co-ordination of a small project. Other cohorts joined for an eventful 2 weeks of activities at the end of the academic year.

KNOWLEDGE TRANSFER

Working in teams within and across year groups and courses; MSA students participate in peer to peer learning. In addition, collaborators, participants and students engage in the transfer of tangible and intellectual property, expertise, learning and skills.

LARGE SCALE

This year approximately 650 students from 5 cohorts in MSA have worked on 40 projects with partners.

QUESTIONS

For questions about MSA LIVE please contact the MSA LIVE team:

msalive@mmu.ac.uk

BLOG

live.msa.ac.uk/2025

SOCIAL

#MSALive25

@msa.live.25

@TheMSArch

@MLA_TheMSArch

WEBSITE

www.msa.ac.uk