

**MANCHESTER SCHOOL
OF ARCHITECTURE**

GROWING TOGETHERNESS

an outdoor kitchen for the community



Visit msa.ac.uk for more information



**MSA
LIVE 24**

Team

Sarah Nawaz (MArch1)

Boyu Qu (MArch1)

Emre Sonmez (MArch1)

Olayinka Thomas-Orogan (MArch1)

Yan Wan (MA AR)

Ellie Mckiernan (BA1)

Erin Moore (BA1)

Maisha Shaiek (BA1)

Tina Abdul Baki (BA1)

Wen Jing Koo (BA1)

Christopher Whitehead (BA2)

Wenyao Luo (BA2)

Zenani Nkosi-Rawles (BA2)

Zhengyang Dai (BA2)

Amrit Gurung (MLA1)

Yuqi Wang (MLA1)

Partners

Our collaborator for this project was the 'Growing Togetherness CIC, who use Horticulture and the natural environment to relieve stress, aid mental health and explore ways to live more sustainably.

Introduction

Growing Togetherness

This student-led team is collaborating with Growing Togetherness CIC to design a new, covered outdoor kitchen for the Seedly Pavilion Community at Buile Hill Park. The community faces a series of challenges from lack of storage to limited shelter and beyond designing the canopy, the project aims to develop a master plan that locates additional amenities to address these issues and significantly improve the outdoor facilities.

During the two-week process, students undertake public consultations with the key users and community groups, to understand what people value on the site and inspire design ideas. Students were able to collaboratively produce design proposals for the canopy and the additional amenities on the site in response to the feedback collected from the community, creating visuals, drawings and models. This process helped students refine their sketching and model-making skills, in addition to gaining valuable skills in communication, public speaking, and organisation through the stakeholder engagement activities. Students also share their knowledge of various software tools and support each other throughout the process.

The final design outcome proposed by the team, inspired by the feedback gained through the stakeholder engagement, will be used by Growing Togetherness CIC as a starting point in understanding the needs of all the groups using the site to enable them to access funding bids to realise future aspirations, and ultimately shape the development around the Seedley Park Pavilion.

Initial Site Visit

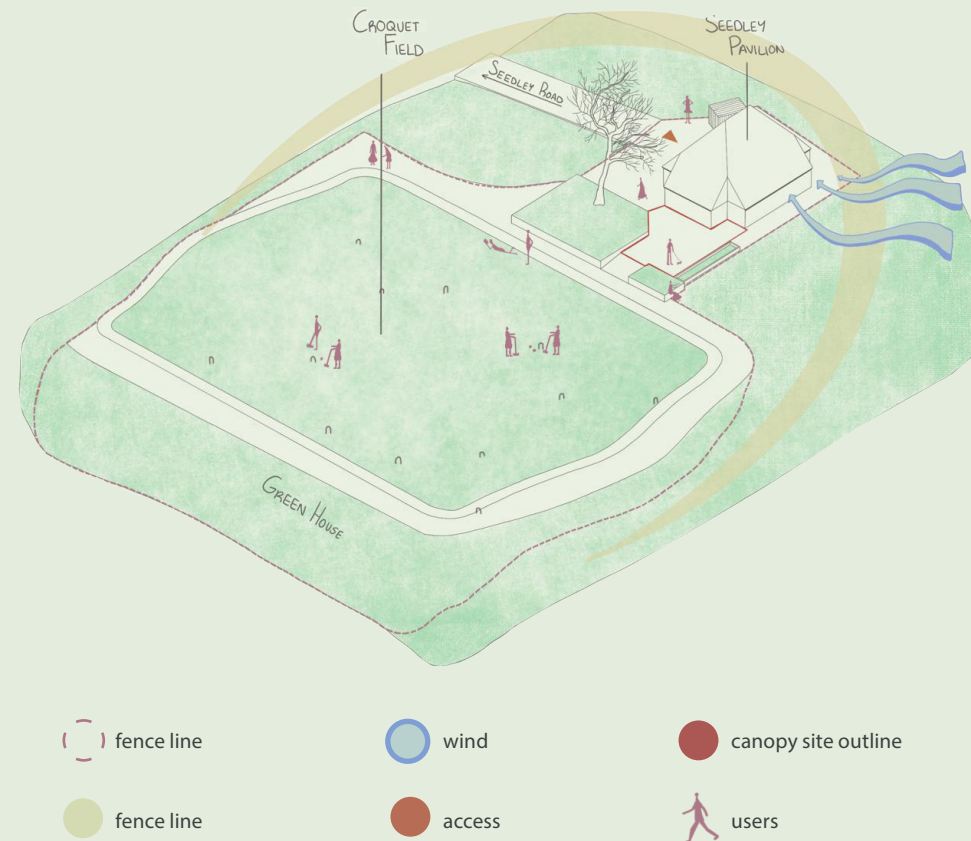
The initial site visit was in January 2024, where we met Mark on site for a tour and initial evaluation of the canopy area. It is situated within Buile Hill Park, on the south side within a Grade II listed park, mainly due to Buile Hill Park Hall on top of the hill. It is a small pavilion which is full of life with a very full calendar. A pay-as-you-can cafe, with an open space for bingo night, ukulele classes and a general hang out spot for some of the elderly locals.



The initial site visit was in January 2024, where we met Mark on site for a tour and initial evaluation of the canopy area. It is situated within Buile Hill Park, on the south side within a Grade II listed park. The existing pavilion roof is full of many angular sides so we measured on site to enable us a better understanding to also think about canopy connections to the building. As well as scoping around the existing boundary to see where potential extensions to consider storage would fit.



It was key for our group to really engage with the community to understand why they love the site and how we can help improve the existing facilities. As the Seedley Park Pavilion plays host to a very passionate croquet team we found it great site research to play a game ourselves!



Site Analysis

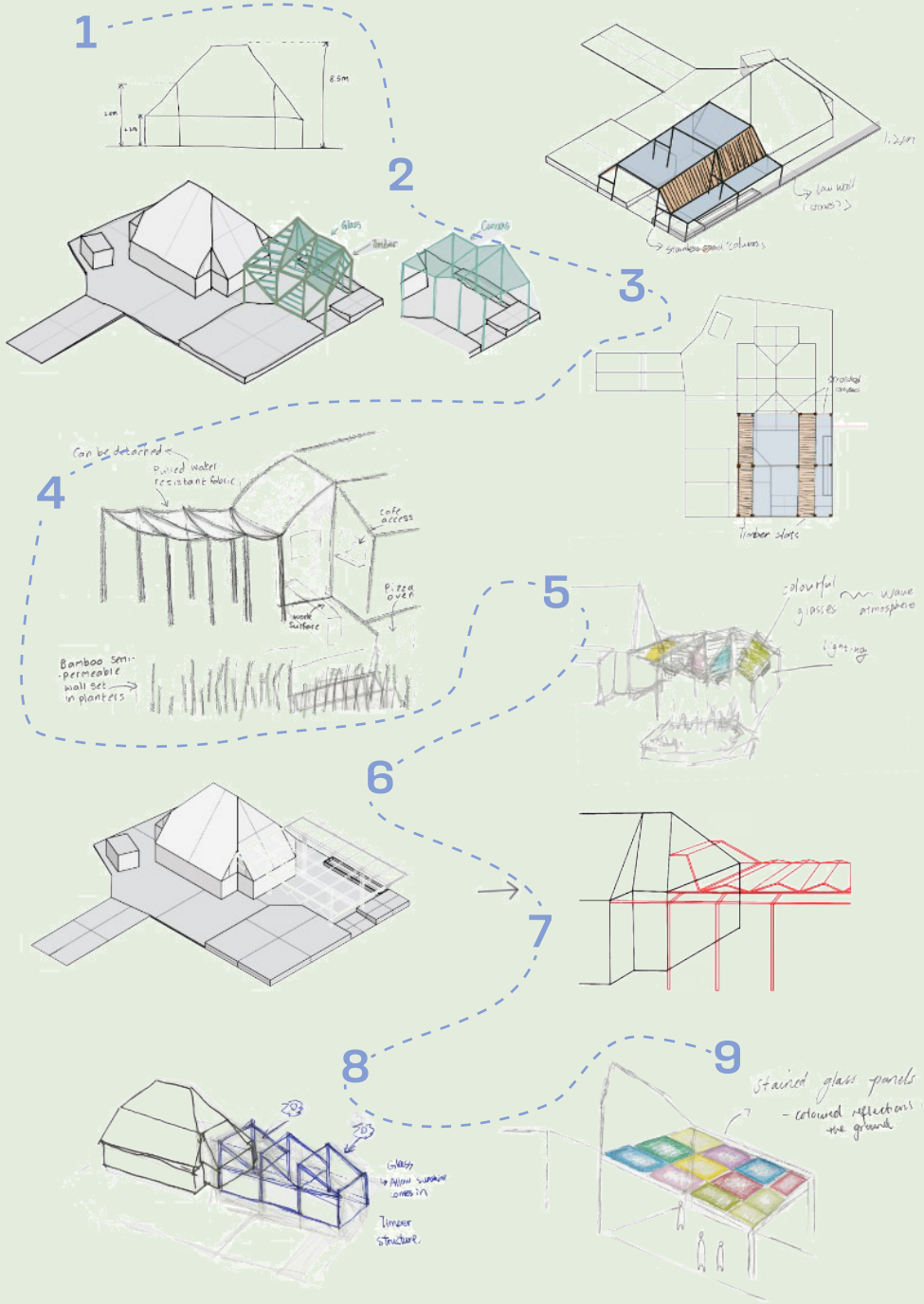
On site we had access to historical photos and accounts of the site from early 1900s. This enabled us to see how the previous bowling green and pavilion that used to exist sat within its context and how people interacted with it.

A key takeaway from users on site that they enjoy the fact the pavilion is not fenced off in an opaque border that keep onlookers locked out. They enjoy that the park has transformed into an inclusive environment and encourages people to be curious and find out what is going on.

Therefore, any extensions or additional storage created should retain this friendly facade, and not close off any access to the public with big opaque frontage.

Canopy concept sketches

After our first site visit, we did a canopy concept sketching workshop, working with each other to provide options for designs and meet the requirements of the brief.



Community consultation day



Our consultation saw many of the groups that use our site get involved with discussing ideas, memories, suggestions and stories. Our interactive site model was used to locate each of these discussions on site and helped them all to understand our thoughts.

Lots of people see that maintaining a view and connection to the natural elements of site as very important, and while there are issues concerning amount of shading and rain protection, many were also reminiscent of the past, while also understanding the need to move spaces around to create better circulation.

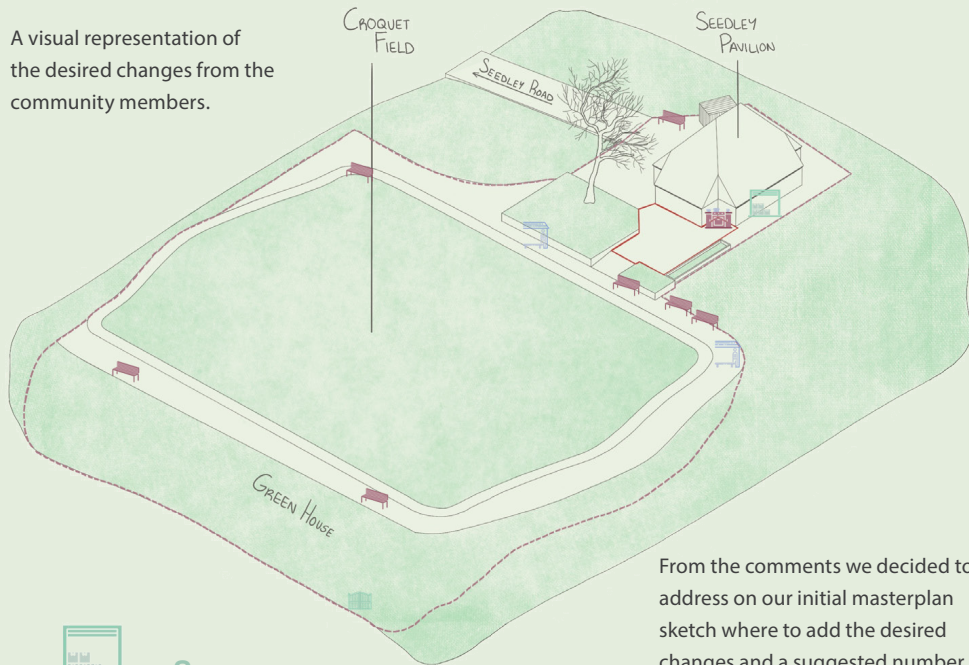


Community Ideas mapped out

From the community consultation, the users of the pavilion were able to write down the memories and from that we were able to gauge as a group the most pressing changes desired.




A visual representation of the desired changes from the community members.



 x2 storage areas

 x1 fence

 x1 outdoor kitchen

 x2 shelter

 x6 bench

From the comments we decided to address on our initial masterplan sketch where to add the desired changes and a suggested number for each.

Design Options



Our first option is a combination of the positive attributes from the two model options we displayed at the community engagement workshop. A mix of the solid and translucent panels that are arrayed in relation to the sun and vegetation.



Our second option is a more complex geometric pattern, that responds to the community desires. A mixed canopy with both, clear, translucent and opaque panels so there is varying light able to come through. Some areas are open to allow for vegetation to receive direct light and rain too.

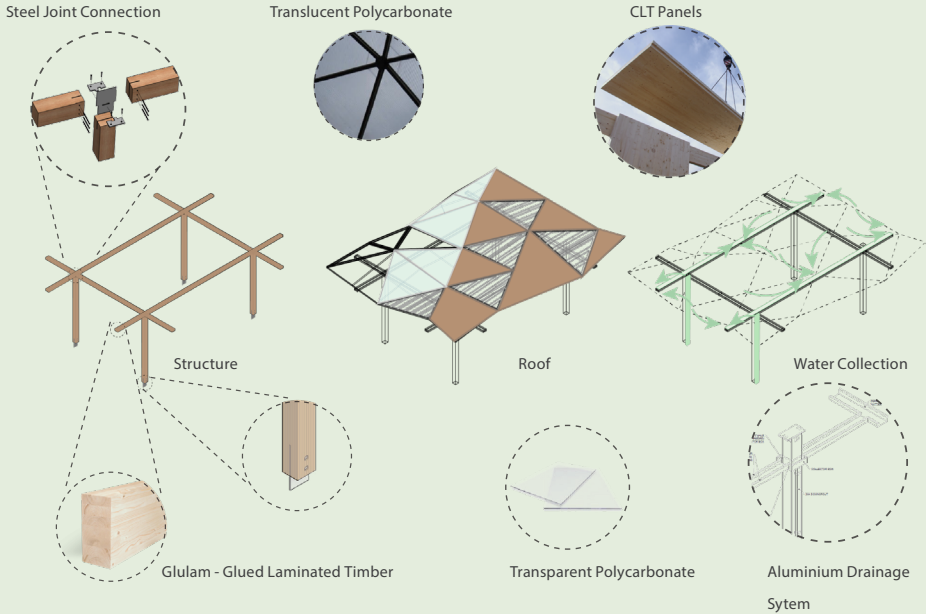
Final Masterplan



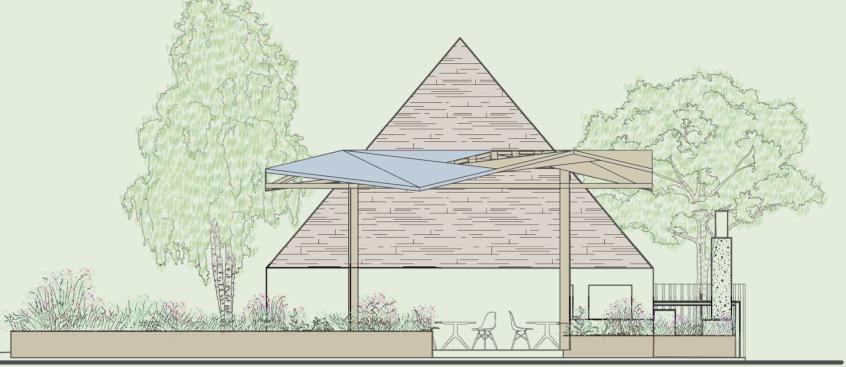
Illustrative diagrams of new designs in-use.



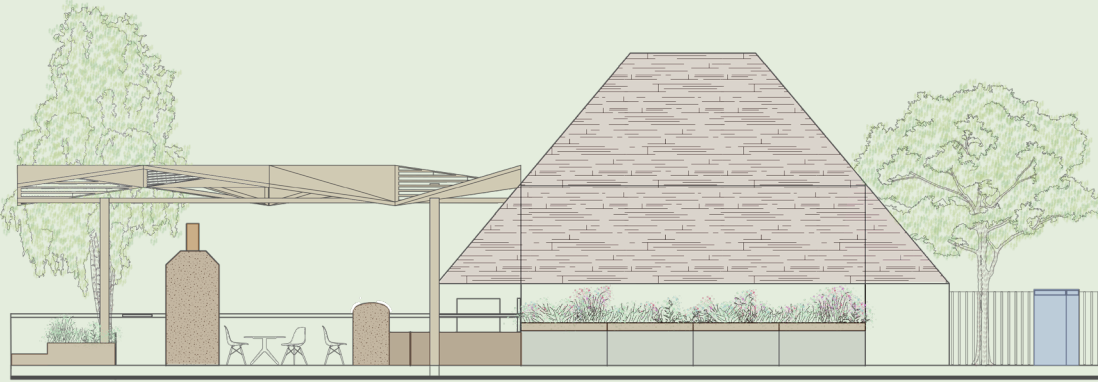
Canopy Proposal



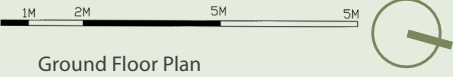
+5.00
+4.00
+3.00
+2.00
±0.00



Elevation A-A



Elevation B-B



← A

← A

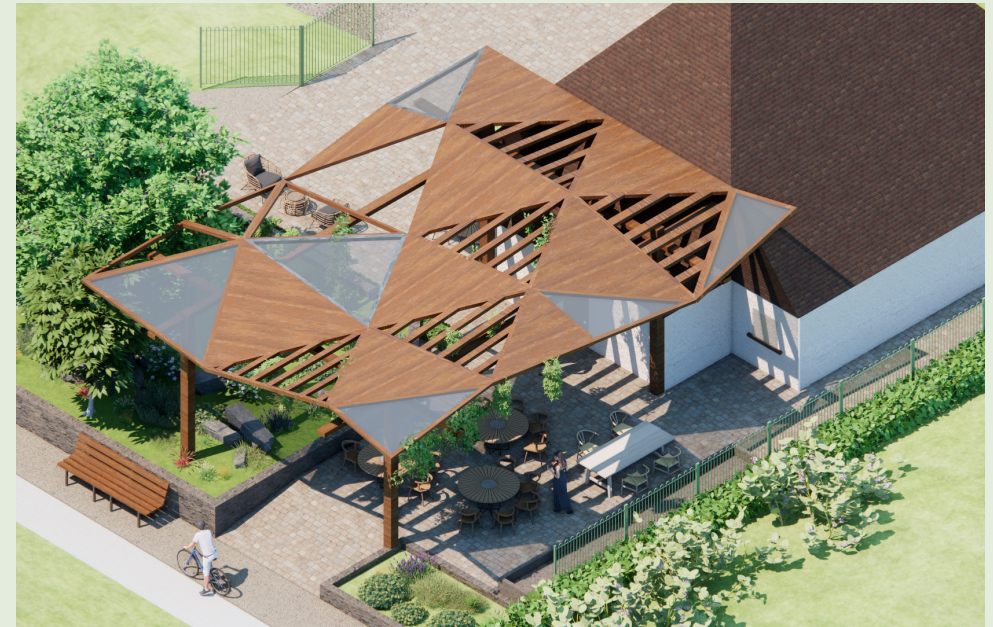


Section A - A

0 1 2 3 4m

The Final Proposal - Visuals

A process which began through sketch exercises, site visits, croquet games and more, developed into a consciously designed canopy that truly listened to the wants and needs of the community. A permanent structure that reflects the playful nature of Seedly Pavilion, as well as a variation of transparent to opaque pieces to meet all needs. Now bingo, ukulele sessions can grow in numbers and sit outdoors, summer cooking can begin, and a new summer season can begin at the Seedly Pavilion community cafe and gardens at Buile Hill Park.



Final Presentation



On thursday afternoon some of our group members went to site to present our final canopy design to the Mark our collaborator, and many other community members.

They LOVED it! It was a huge success and we are extremely pleased with the positive feedback we received. A few minor changes with storage facilities and some representation is all that is needed before we can send a final version over to Mark.



This has been a wonderful experience for us all. To have been able to truly integrate on site, meet users and understand the community needs and see how our design was received by the clients too.

ABOUT

Each year the MSA LIVE programme unites Masters Architecture year 1 and Masters of Architecture & Adaptive Resuse students with those in BA foundation, year 1 and year 2 and Masters Landscape Architecture 1 in mixed-year teams to undertake live projects with external partners to create social impact.

LIVE PROJECTS

All MSA LIVE projects are live. A live project is where an educational organisation and an external partner develop a brief, timescale, and outcome for their mutual benefit.

SOCIAL IMPACT

All MSA LIVE projects are for community benefit or have social impact. Social impact is the effect an organization's actions have on the well-being of a community. Our agendas are set by our external collaborators.

EXTERNAL PARTNERS

MSA LIVE projects work with many organisations: charities, community groups, social enterprises, community interest companies, researchers, practitioners and educators.

STUDENT-LED

Our MSA masters students take the lead in the project conception, brief development, delivery and co-ordination of a small project. Other cohorts joined for an eventful 2 weeks of activities at the end of the academic year.

KNOWLEDGE TRANSFER

Working in teams within and across year groups and courses; MSA students participate in peer to peer learning. In addition, collaborators, participants and students engage in the transfer of tangible and intellectual property, expertise, learning and skills.

LARGE SCALE

This year approximately 600 students from 6 cohorts in MSA have worked on 40 projects with partners.

QUESTIONS

For questions about MSA LIVE please contact the MSA LIVE team:

msalive@mmu.ac.uk

BLOG

live.msa.ac.uk/2024

SOCIAL

#MSALive24

@msa.live.24

@TheMSArch

MLA_TheMSArch

WEBSITE

www.msa.ac.uk