



ELEVATE AND CELEBRATE

YOUTH CENTRE REDEVELOPMENT

Team

Agnese Angelucci (MArch1)

Leo Johnson (MArch1)

Oliver Carter (MArch1)

Keming Zhang (MA AR)

Bin Li (MA AR)

Anisah Islam Chaudhury (BA1)

Rekan Wosu (BA1)

Sarah Catherall (BA1)

Cj Montgomery (BA1)

Jessica Angeline (BA1)

Irina Dragomir (BA2)

Fergus Chalmers (BA2)

Mel Yin Chung (BA2)

Hamza Ahmed (BA2)

Junyi Sui (MLA1)

Yuxuan Chen (MLA1)

Partners

We have been working alongside Chris Russel of Still House Design to deliver a pre-application pack for the expansion of the Kingdom Life Church in Trafford. Building on the work of last years MSA LIVE project, we worked alongside Chris to produce a set of planning drawings, a physical model and visualisations that were displayed at an event of public engagement.

The Kingdom Life Church is a community pillar, located on Chorlton Road in Old Trafford, and has a rich longstanding history in the local area. As well as an extension to the church itself, the pastor hopes to improve the associated youth centre facilities - one of the last remaining youth centres in the area.

The following will outline the work produced during the action week - from the resolution of a feasible design to the production of planning drawings and visuals, with the hopes of attracting investors willing to affect change in the community. As well as the streamlining and improvement of the existing church and youth centre, the pastor Aaron seeks to provide accessible gym and sports facilities, a recording studio for musicians and student accommodation at the upper levels.

During the action week we hosted a public consultation event at the church, and were given the opportunity to engage with those to whom the project means the most, local residents and churchgoers.

Please read on to see how it went!

Introduction

Elevate & Celebrate

Kingdom Life Church has emerged as a pillar of the Trafford community since its birth in Lockdown, with Pastor Aaron's careful hand on the tiller. It serves a large and close knit community with vital worship space and community facilities.

In an age where government cuts have seen many local youth centres brought to their knees, Kingdom Life remains one of the last in the deprived community that it serves. Pastor Aaron hopes to provide his flock and the young people of Trafford with a safe haven, where they can explore their passions in sports and music alike.

With his background in personal fitness tying into his beliefs of healthy body, happy mind and soul, this proposal looks at expanding the youth centre facilities to include a crossfit style gym, an affordable indoor sports centre and to expand on their already well used recording studio.

Alongside this, the proposal seeks to extend the rapidly growing church to accommodate a larger seating capacity, and resolve the problematic back of house space, removing ad-hoc modern extensions and providing classroom spaces, for education and church activities.

We have teamed up with Chris Russel of Still House Design Ltd. who is no stranger to working with places of worship, and under his careful supervision we have delivered a project that can be taken further into the pre-application process.

The proposal outlined in the coming pages is the product of careful deliberation and collaboration - embodying the MSA LIVE spirit - and successfully meets the needs of those most important to the client; his community.

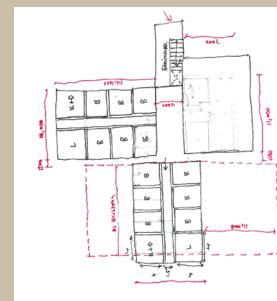
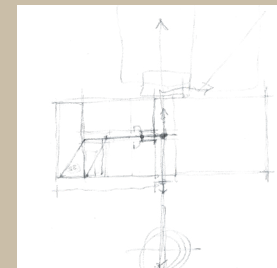
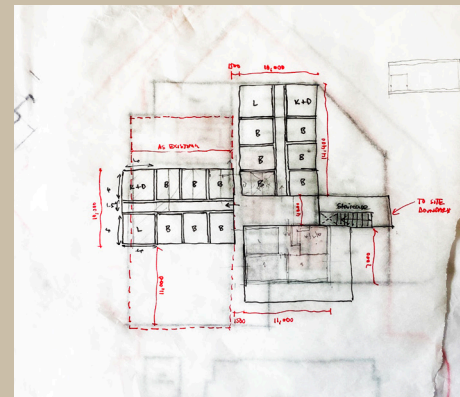
Phase 1

We began the week with a meet up and introduction of the project - looking at the work of last years feasibility study and the preferred strategy of the client, Pastor Aaron. We started with some icebreakers, to get to know the group and to understand where everyone's strengths lay.

The preferred approach was to demolish the problematic back of house space to the church, and provide a sensitive modern extension that created a new entrance to the church and a closer link between church and youth centre. The extension to the youth centre seeks to use the existing structure, and extend the proposal up to the site boundary, and skywards, where the student accomodation will be housed

With an understanding of the design that was settled on last year, the undergraduate students began to hand-sketch out plans and elevations - what might the final project look like? Where does it makes sense to house certain elements? What doesn't work from last years proposal?

We split the group between those working on the church extension and those working on the youth centre, and began to resolve any issues with the design from last year, leaving us in good stead to start producing a set of proposed drawings and plan out the physical model.

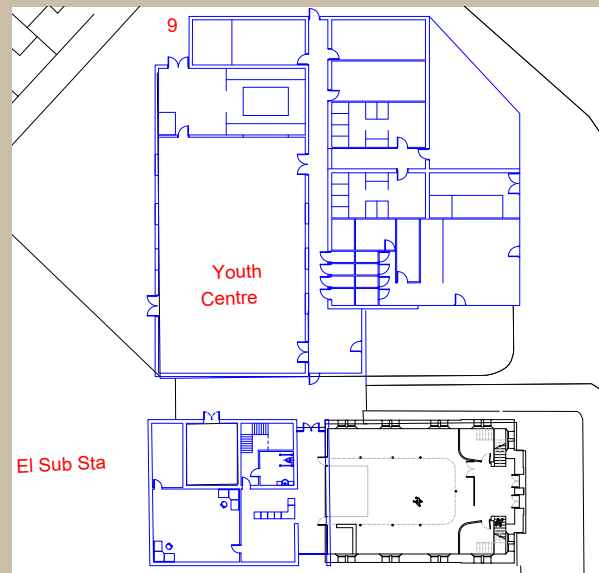
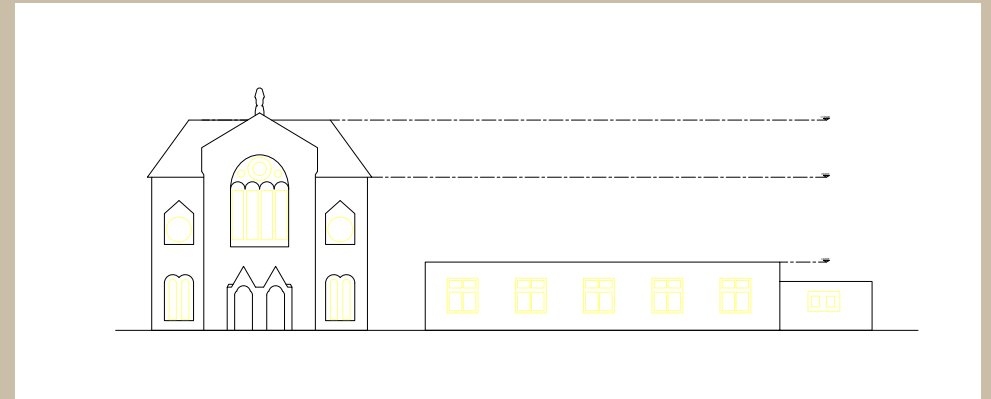


Phase 1

The next few days were spent building a digital model of the site from which we could produce our renders and plans. While some of the group worked on producing the model, others began to draft plans and the rest planned out the physical model.

During this time, the MA students gave various workshops, including best practice for CAD, an outline of the planning process, and what is expected from a set of planning drawings.

This stage was crucial in the resolution of the project and we began to discuss elevation treatments, and the consequences of design decisions at this stage and how it can affect the success of the planning process.



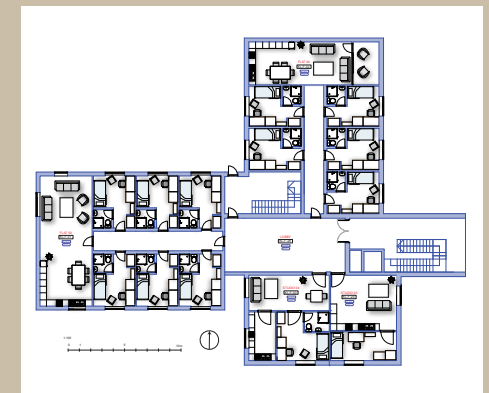
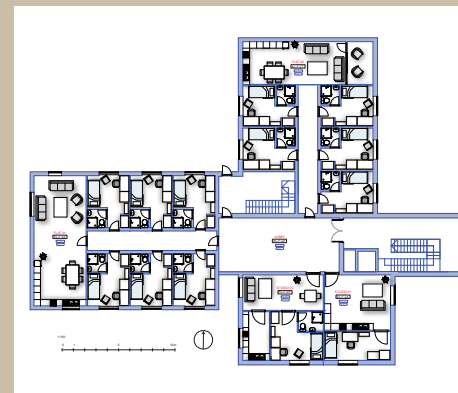
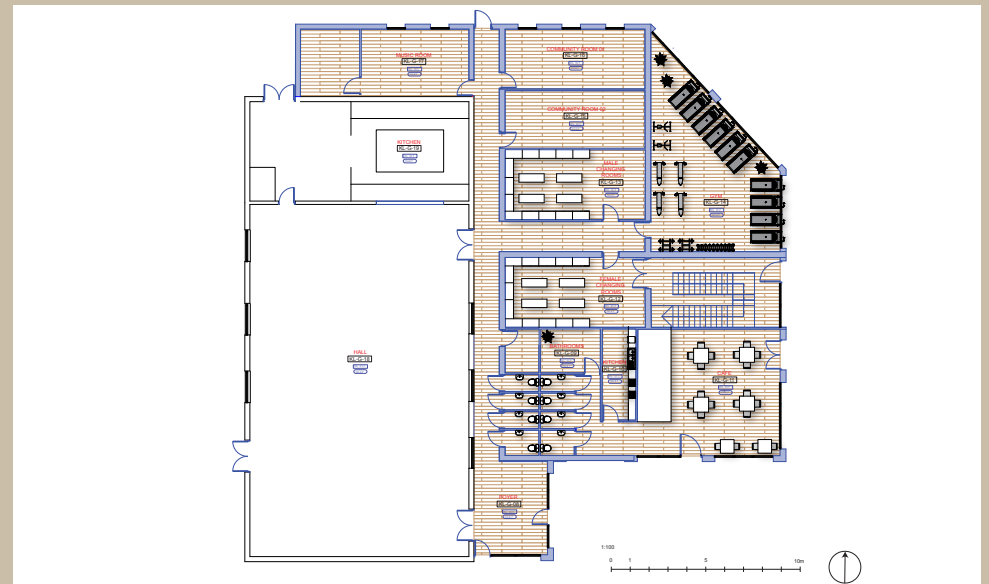
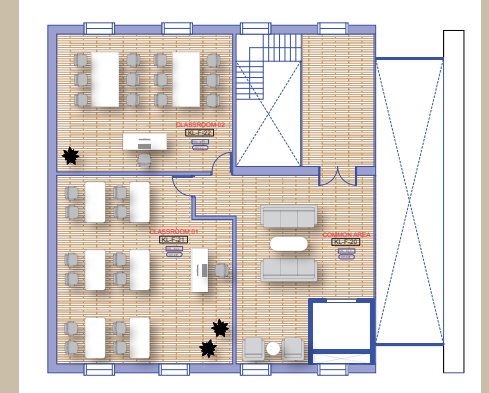
Phase 2

After we had ironed out the issues with the drafted plans and the digital model, we began to properly draw up and plot the plans, in preparation for the public engagement event.

At this point the physical model was also making good progress, with a group of 3 making great headway in exploring the massing of the proposed against the existing buildings. The group chose to use a simple material palette of timber, using stains to differentiate between existing and proposed.

The students engaged with many woodworking techniques, which led to a clean final product.

The adjacent images show the plans that we displayed at the public engagement event

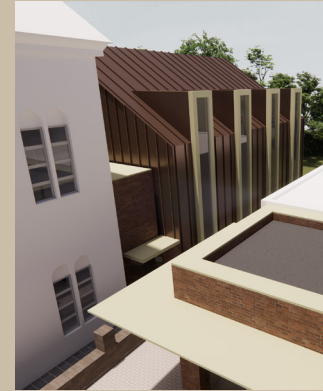
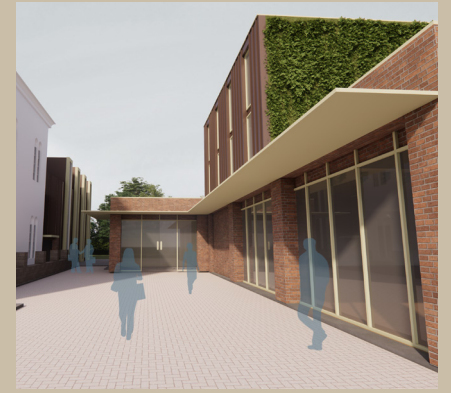


Phase 2

After the plans were finalised we began to produce renders for the public consultation. These images would be key in attracting investors and as such had to be alluring and capture the essence and scale of the project.

At this stage of the project all hands were on deck, finalising the renders and getting the model and drawings ready for the pin up at the church.

Before going into this, Chris came in and offered his wisdom, looking over the work and suggesting alterations where necessary.



Phase 3

At this point we were ready for the public engagement event.

We had printed the 5 sheets showing the proposed site plan, individual floor plans and including all of the renders. The physical model (shown adjacent) was ready, and placed in pride of place in the church.

We had readied a questionnaire and some pamphlets for the church to distribute beforehand, and Pastor Aaron kindly allowed us to use the main hall as our pin up space.

The public engagement event was great, to speak with residents and churchgoers alike, 22 people turned out to see the scheme that we had produced, and the undergraduates were given the opportunity to see how an event such as this is handled.

The day was a massive success for us, and we all celebrated with a meal from Kool Runnings, the locally renowned food truck that can be found outside the church.

With full bellies and content with a solid days work, we left, our last task being to record the feedback that we had gathered through the day.



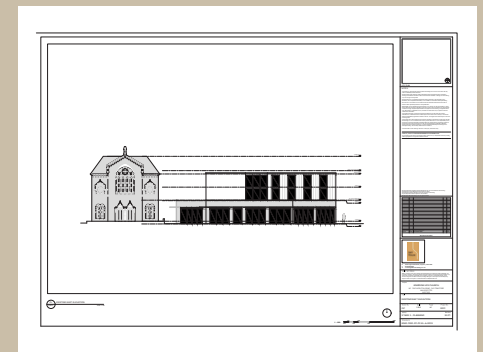
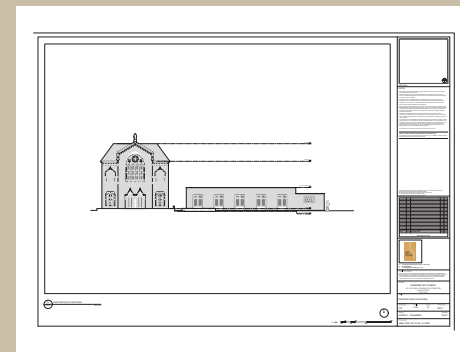
Proposed Works to Kingston Life Church

Works to the existing Youth Centre will include:

- Café and associated kitchen
- Gym and associated change
- Multipurpose Sports Hall
- Music Studios
- Community Rooms
- Student Accommodation

Works to the Church will include:

- 4 new Classrooms
- Reception
- Office Space
- Classrooms



Phase 4

The final days of the action week were much less intense - our only remaining tasks to visually represent the feedback that we had gathered and move our drawings onto sheets, for Chris to use going forward.

This included another workshop, looking at past planning applications completed by the masters students as exemplar for a set of existing, demolition and proposed drawings.

Whilst some of the students worked on finalising the drawing pack, others were tasked with going through the forms filled out by attendants of the public engagement, and using this to create the graphic, seen adjacent, which hi-lights the key issues.

Reflection.

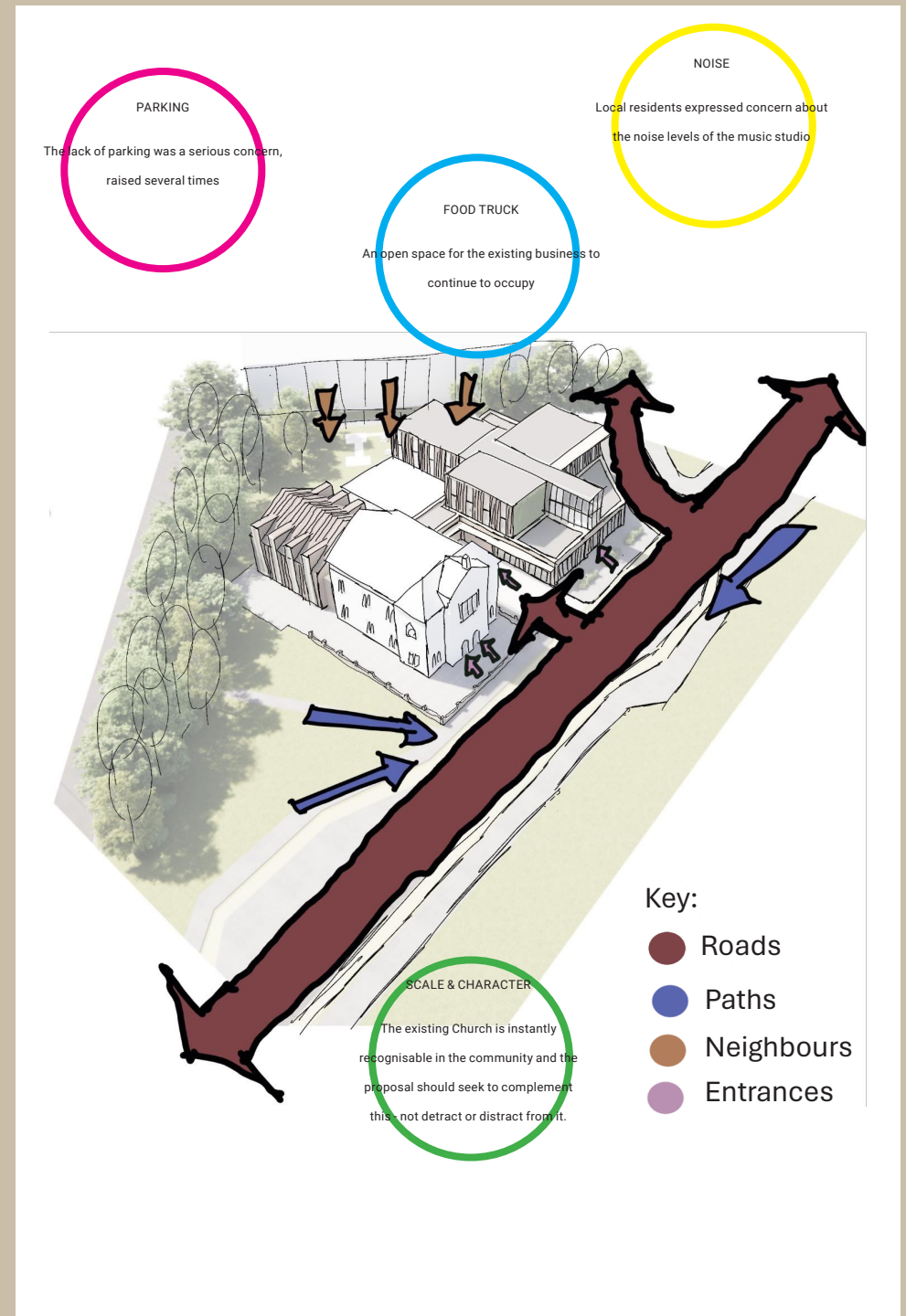
Firstly, we would like to thank Aaron and Chris for their collaboration on this exciting project. It really was an honour to be involved in such an exciting scheme and we wish them both the best going forward with it.

The team worked extremely cohesively throughout the action week, and displayed true versatility in terms of picking up, understanding and synthesising the tasks at hand.

The turn around for producing our list of deliverables was a tight one, and without the effort and collaboration of the whole group, it would not have been possible. The action week for Group 12 was very smooth sailing, and we have collectively produced a very polished output, for which everybody should be proud.

We look forward to seeing this project progress, and hope that the undergraduates have come away with a better knowledge of, and engagement with, the planning process. We hope that this stands them in good stead when looking to progress their careers into the world of professional practice.

All the best,



ABOUT

Each year the MSA LIVE programme unites Masters Architecture year 1 and Masters of Architecture & Adaptive Resuse students with those in BA foundation, year 1 and year 2 and Masters Landscape Architecture 1 in mixed-year teams to undertake live projects with external partners to create social impact.

LIVE PROJECTS

All MSA LIVE projects are live. A live project is where an educational organisation and an external partner develop a brief, timescale, and outcome for their mutual benefit.

SOCIAL IMPACT

All MSA LIVE projects are for community benefit or have social impact. Social impact is the effect an organization's actions have on the well-being of a community. Our agendas are set by our external collaborators.

EXTERNAL PARTNERS

MSA LIVE projects work with many organisations: charities, community groups, social enterprises, community interest companies, researchers, practitioners and educators.

STUDENT-LED

Our MSA masters students take the lead in the project conception, brief development, delivery and co-ordination of a small project. Other cohorts joined for an eventful 2 weeks of activities at the end of the academic year.

KNOWLEDGE TRANSFER

Working in teams within and across year groups and courses; MSA students participate in peer to peer learning. In addition, collaborators, participants and students engage in the transfer of tangible and intellectual property, expertise, learning and skills.

LARGE SCALE

This year approximately 600 students from 6 cohorts in MSA have worked on 40 projects with partners.

QUESTIONS

For questions about MSA LIVE please contact the MSA LIVE team:

msalive@mmu.ac.uk

BLOG

live.msa.ac.uk/2024

SOCIAL

#MSALive24

@msa.live.24

@TheMSArch

@MLA_TheMSArch

WEBSITE

www.msa.ac.uk