

MANCHESTER SCHOOL  
OF ARCHITECTURE

# [esc]apism



Visit [msa.ac.uk](https://msa.ac.uk) for more information



MSA  
LIVE 23

## Team

Amelia Sarles (MArch1)

Magdeline De Witt (MArch1)

Qihao Ren (MArch1)

Tak Yung Jacqueline Lau (MArch1)

Yuxuan Meng (MArch1)

Badya Mohamed (BA1)

Chun Hei Samson Lok (BA1)

Huynh Thien An Pham (BA1)

Uyiosa Glory Aigbe (BA1)

Malavika Pavothil (BA2)

Nothemba Gulubane (BA2)

Kiren Agravat (BA2)

Meena Abdula (BA2)

Solomon Poole (BA2)

Kakashan Khan (BA2)

## Partners



Gorse Hill Studios (GHSCC) is a youth centre and charity which supports young people living local to Trafford, Manchester. The youth charity utilises creative engagement to work with young people, supporting their social, emotional and educational futures. GHSCC provides support to encourage reengagement in education, providing creative interests such as music, art, dance as well as core subject teaching. Gorse Hill Studios plays an important role in their local and city-wide community, supporting young people from all backgrounds, maximising the opportunities that are offered to them. Activities are run for young people with differing needs, such as an open access Tuesday youth club for special educational needs and disabilities (SEND) 11-25 year olds. During school holidays, activities are often available, including art classes, cooking classes and martial arts boxing sessions, where food and drinks are provided, everything free of charge.

We are working closely with Louise Russell and Lizzie Chapman, both passionate employees of GHSCC. Louise Russell is Operations Manager, alongside Education and Learning Lead. Lizzie Chapman is Creative Engagement Lead and Manager. They are our main points of contact within Gorse Hill Studios, facilitating the initial design stages of their outdoor space.

# Agenda

## Project Name

### Project Aim

Our group's project aim is to create safe spaces for young people of the Gorse Hill Studios arts community (GHSCC). We would be proposing solutions to utilise the green space outside the GHSCC building to accommodate the needs of the arts community. The proposal would be designed through working with BA students as well as the young artists from GHSCC through the process.

### Project Background

The garden space around the building is left unused, and GHSCC would like to utilise the space and give the young people more space to be in. They would want the space to be sheltered from the rain and from the noisy road, where young people could feel safe and create art. The staff and young people at the studio have been working on a scheme on safe spaces and we would be extending that scheme while utilising the garden space around the building.

### Project Outcome

With our team members and BA students in our group, we would be proposing one temporary and one permanent options. The temporary proposal would be of an outdoor furniture prototype which is comparably affordable, while the permanent proposal would be of changes at larger scale. We would be holding an activity with the young people at GHSCC to get their ideas on the proposal through visual collages. Their ideas would then be integrated into our proposals, and would be presented to GHSCC representative staff at the end of the two weeks.

### Future Aim

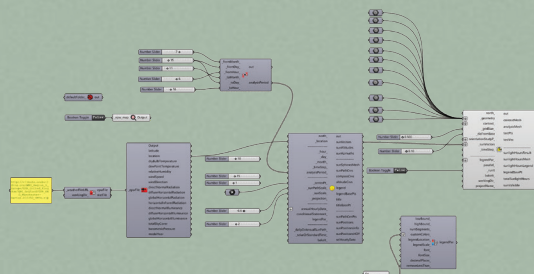
We hope our proposals will help extend the current GHSCC 'Lost Safe Spaces' project to their garden space, and create more shelters for young people to gather in. This would provide social impact by building a safer atmosphere within the community for the younger generation.



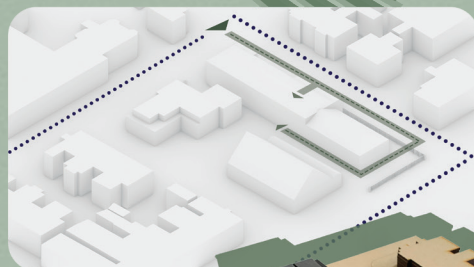
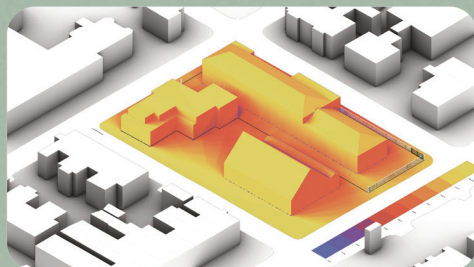
# Existing Site

## Site Analysis

We first conducted an introduction to the BA students on site analysis with Grasshopper and Photoshop. We then proceed on to completing solar, noise and flow analysis, which will help us in brainstorming designs. The loud noises from the main road was mentioned previously by GHSCC representative Lizzie, and therefore will be focused on in our design development. To allow the BA students to get familiar with the existing site and the GHSCC building, we have worked together to build a physical site model. The model will also be used during the design process, to help us relate back to the site when developing ideas. The analysis and site observations show that the main road on the South-East of the site is the noisiest, the site is generally well-lit and the entrance to the site is on the quieter road instead of the main one.



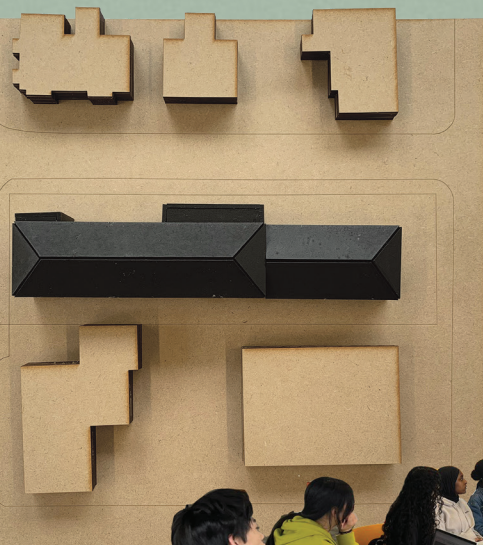
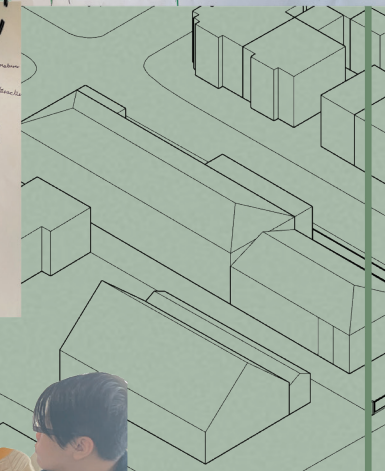
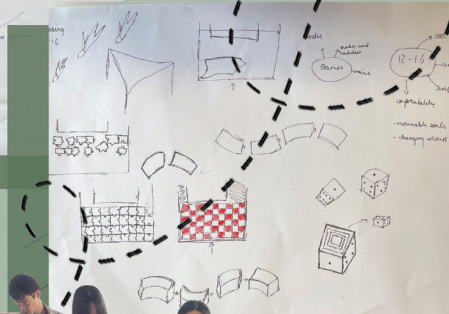
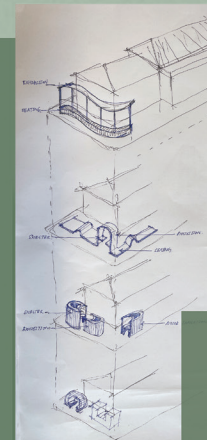
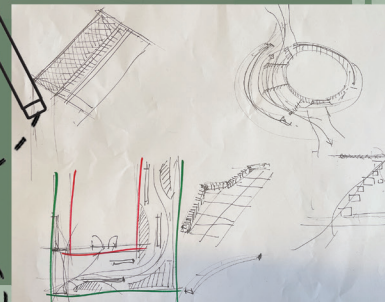
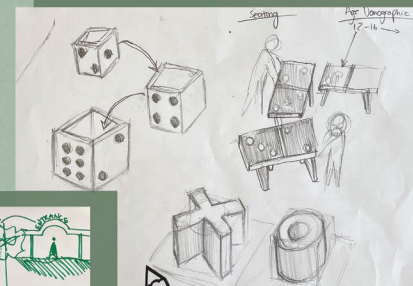
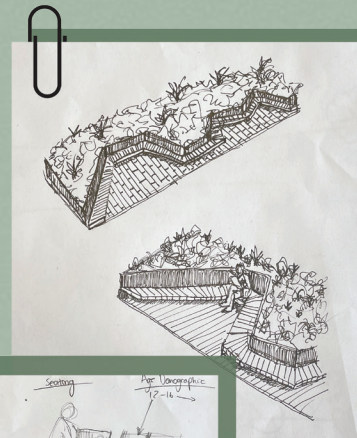
Solar Analysis



# Initial Ideas

## Discussions and Initial sketches

After discussion on the existing site with the site analysis, photos and a physical model. While taking into account the site factors, we have produced initial sketches in smaller groups. The initial ideas included playful shapes and seating for the young people with sound insulation panels. Greenery and landscape design was suggested to create paths from the gate to the entrance to improve the circulation. Initial images were adapted into cut-out images along with printed site photos for the young people at GHSCC to create collages with during our site engagement activity with them.





# Engagement Activity

## Site Visit

We have arranged a site visit to GHSCC with our BA team members. Having the tour around the outdoor and indoor areas helped us understand the purpose of this project better. We had conversations with Lizzie, and discussed the problems they encountered for the outdoor space and the extension they wanted for the first floor art studio. She also mentioned how SEND young people should be taken into consideration during the design process.

## Engagement Activity with Young Artists

We worked with a group of young artists at GHSCC - ARTIVIST, after our tour around the site. We have prepared black and white site photos of the outdoor spaces and colourful images for them to do collages and visually represent their vision for the future of the space. They each presented their visual collages at the end of the session, explaining their ideas to us. Some young artists even went on to doing their own sketches and creating wire sculpture to express their thoughts. The ARTIVIST group had really creative ideas and also had thoughts on how the outdoor space could be used for educational and creative purposes.



## Analysis on the Engagement Activity

Analysing their sketches, sculptures and collages while considering the space needed for the activities, we have integrated their ideas into our development of the proposals. The suggestion of improving the circulation, adding zones for art creation and sports, etc. were integrated into our project. As the site also accommodated young people with mental and physical disabilities, our developed design will include facilities like sensory walls and space for wheelchair users and emotional support animals. The extension suggested by Lizzie will also be taken into consideration for the permanent proposal.

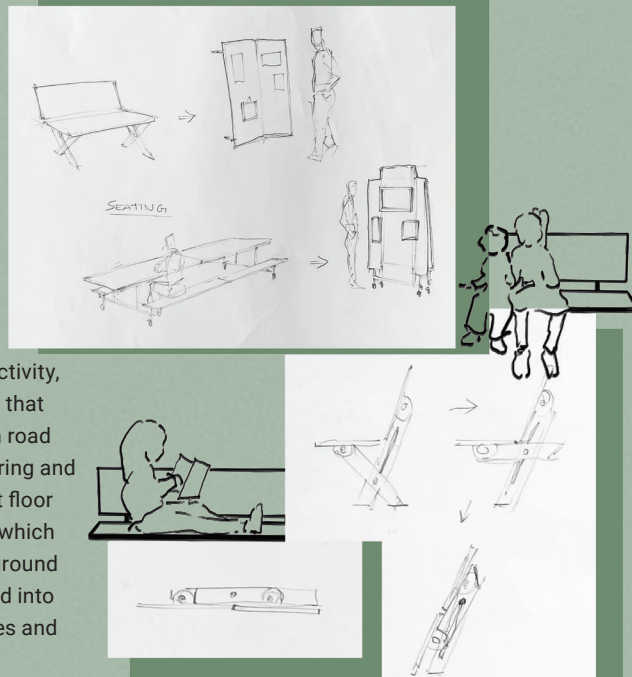




# Design Development

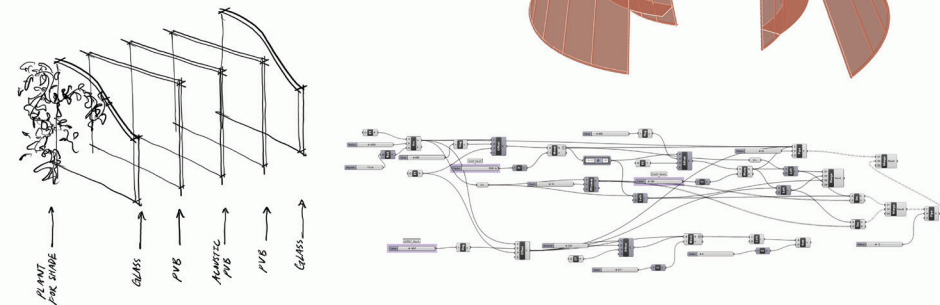
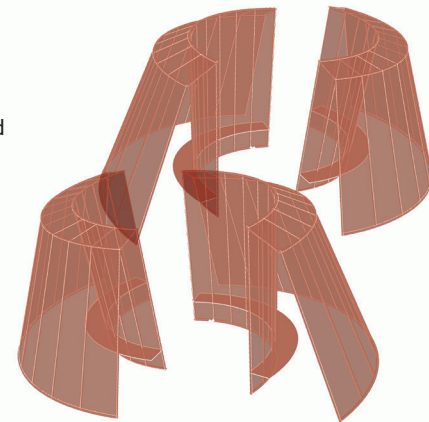
## Response to Engagement Activity

After our engagement activity with the ARTIVIST group, we gathered to discuss our amended approach to the project aims and detailed development for both the temporary and permanent options. Assessing the site opportunities and constraints while considering the ideas from the activity, we have arrived at this sketch site plan that included a new entrance near the main road with a wayfinder, a playground, bouldering and sensory walls. An extension of the first floor art room was also taken into account, which provides an outdoor art space on the ground floor too. The caravan will be developed into a food truck, and hubs with flexible uses and sound insulation will be added.



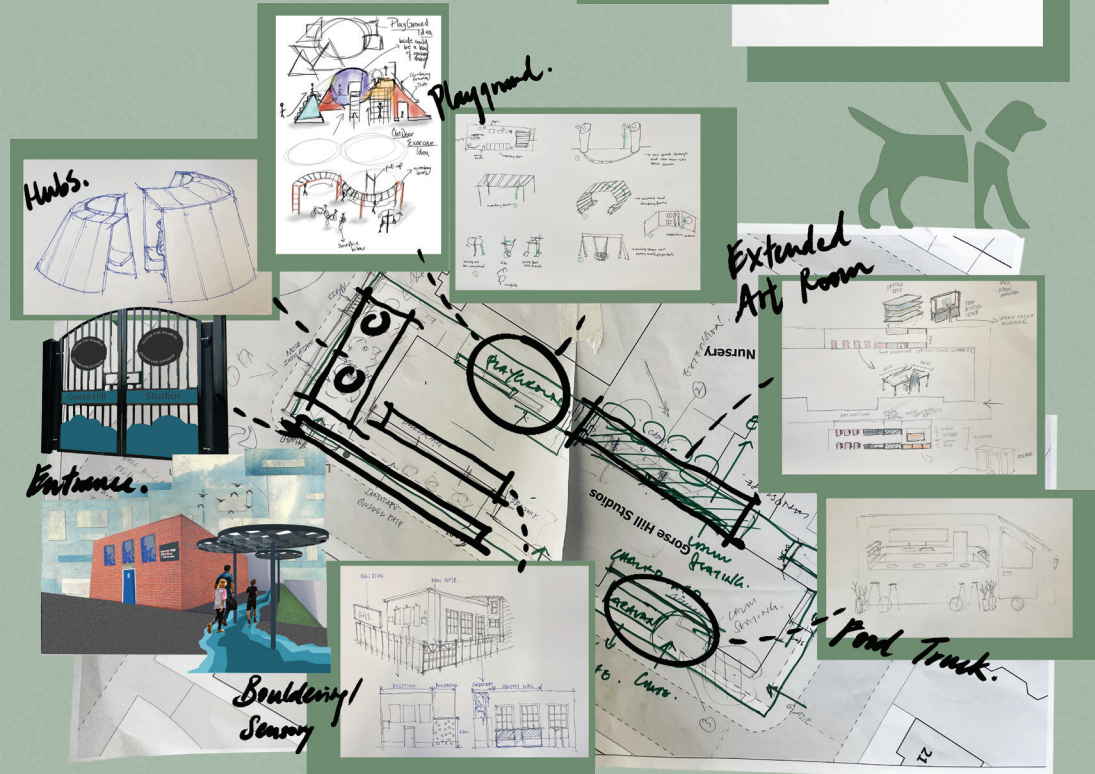
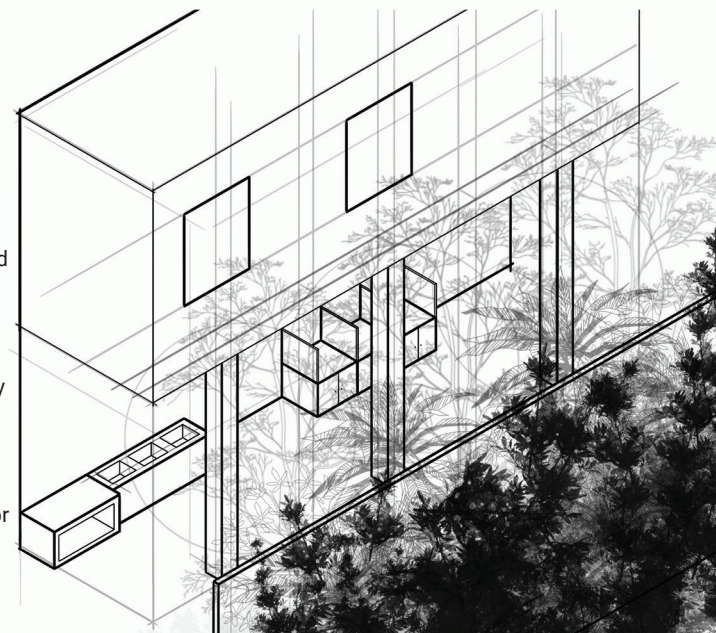
## Hub Design

Hand sketches and precedents were used to develop the design of the hubs at the outdoor space. The ideas were then polished with Rhino and Grasshopper. The shape allows passages through the hubs and a tree to sit within. The sheltered space of the hub could be used flexibly, and gives young people a small and semi-enclosed space in the garden. The wall build-up shows the sound-insulating and shade elements of the design.



## Art Room Extension

An extension for the first floor art room was proposed during site discussions. This drawing further illustrates the relationship between the proposed extension and the outdoor art space on the ground floor. The surroundings (nursery opposite GHSCC) should be taken into account when designing windows for the extension.



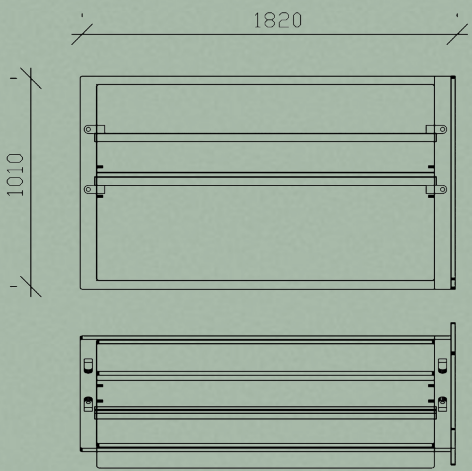


# Temporary Option

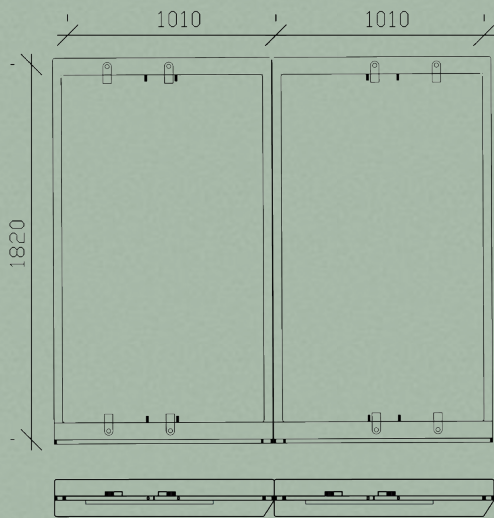
## Foldable bench with exhibition panel

The temporary option is a more affordable prototype that merges both outdoor furniture and exhibition panels into one. Mechanism as shown in the building manual, the bench folds up into an exhibition stand. The drawings below show the bench and exhibition panel in plan and elevation. The 3D visualisations also help demonstrate how the bench / panel will look like. The temporary option could also be integrated into our permanent option as calm seating.

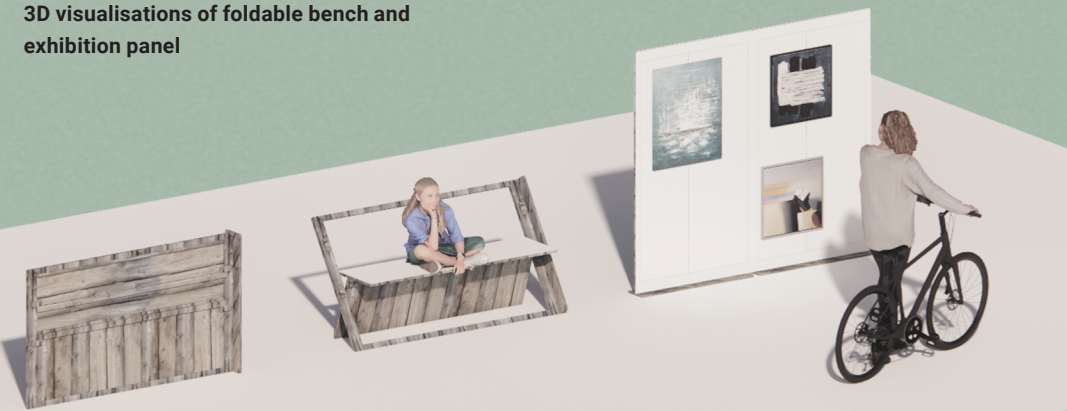
Bench elevation and plan



Exhibition panel elevation and plan

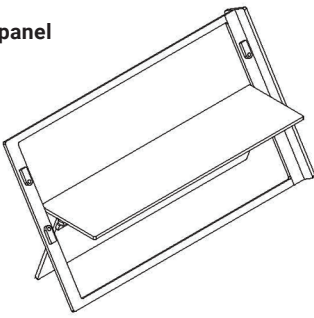


3D visualisations of foldable bench and exhibition panel

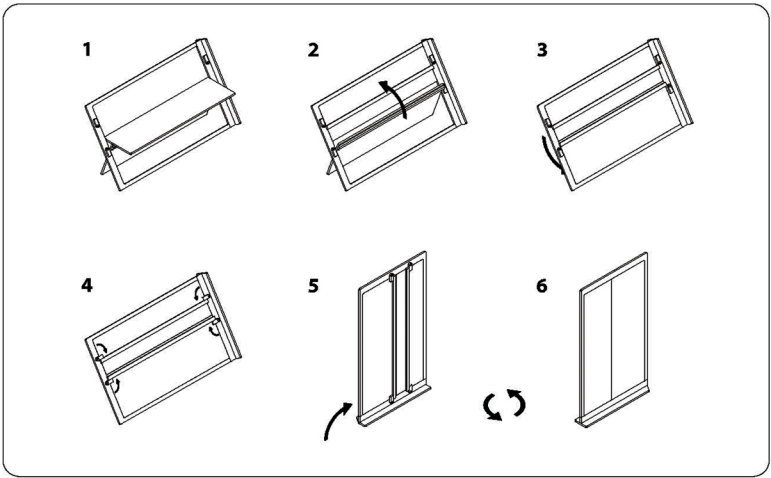


# Building Manual

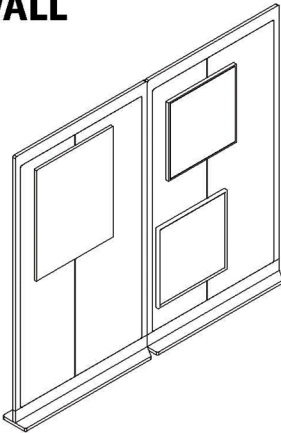
## Foldable bench with exhibition panel



## BENCH



## EXHIBITION WALL





# Site Plan

## Site Plan

Our final outcome for the permanent option includes the site plan showing the different outdoor areas as annotated with the legend.

**KEY**

- 1. New entrance
- 2. Boulderling wall
- 3. Sensory wall
- 4. Canopy
- 5. Caravan cafe
- 6. Chalkboard on floor or space for cafe seating
- 7. Safe seating, away from busy road
- 8. Timber bin cover
- 9. Parking space
- 10. Chalkboard mounted on wall, leaving space for entrance
- 11. Woodwork / art space
- 12. Playground / outdoor gym
- 13. Hubs
- 14. First floor art room extension

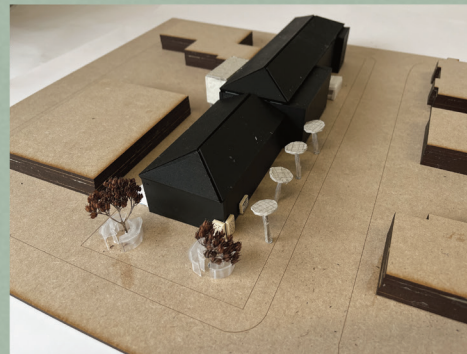
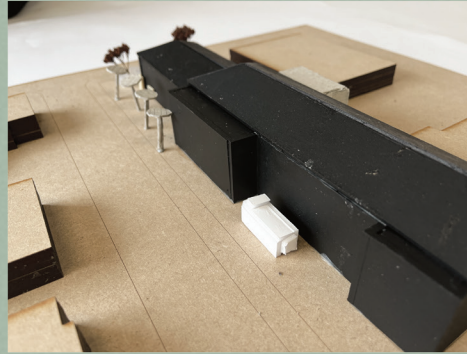




# Site Model

## Site Model (1:200)

After finalising our design ideas, we worked on both the site plan and the physical site model in parallel. We were split into groups for this design development, and here are the sketch models of the different zones of the outdoor space, in relation to the site.



# Perspectives

## View from the new gate

Visitors will arrive at the glass hubs and bouldering wall as soon as they enter the site.



## View from the existing gate

The existing caravan will be used as a food truck, with a chalk board as a panel for young people to express their views visually.



## Outdoor art space

With the proposed extension of the first floor art room, there will be an additional art space at ground floor outdoor area.





## ABOUT

Each year the MSA LIVE programme unites Masters Architecture year 1 students with those in BA year 1 and year 2 and Masters Landscape Architecture 1 in mixed-year teams to undertake live projects with external partners to create social impact.

## LIVE PROJECTS

All MSA LIVE projects are live. A live project is where an educational organisation and an external partner develop a brief, timescale, and outcome for their mutual benefit.

## SOCIAL IMPACT

All MSA LIVE projects have social impact. Social impact is the effect an organization's actions have on the well-being of a community. Our agendas are set by our external collaborators.

## EXTERNAL PARTNERS

MSA LIVE projects work with many organisations: charities, community groups, social enterprises, community interest companies, researchers, practitioners and educators.

## STUDENT-LED

Our MSA masters students take the lead in the project conception, brief development, delivery and co-ordination of a small project. Other cohorts joined for an eventful 2 weeks of activities at the end of the academic year.

## KNOWLEDGE TRANSFER

Working in teams within and across year groups and courses; MSA students participate in peer to peer learning. In addition, collaborators, participants and students engage in the transfer of tangible and intellectual property, expertise, learning and skills.

## LARGE SCALE

This year approximately 650 students from 4 cohorts in MSA have worked on 42 projects with partners.

## QUESTIONS

For questions about MSA LIVE please contact the MSA LIVE team:

**[msalive@mmu.ac.uk](mailto:msalive@mmu.ac.uk)**

## BLOG

**[live.msa.ac.uk/2023](http://live.msa.ac.uk/2023)**

## SOCIAL

**#MSALive23**

**@msa.live.23**

**@TheMSArch**

**@MLA\_TheMSArch**

## WEBSITE

**[www.msa.ac.uk](http://www.msa.ac.uk)**