

MANCHESTER SCHOOL OF ARCHITECTURE

BACKYARD SOCIAL

The Miners Community Arts and Music Centre



Visit msa.ac.uk for more information



The Miners
Community Arts and
Music Centre

MSA LIVE 23

Team

Hannah Goodrich (MArch1)

Matthew Stitch (MArch1)

Thomas Stevenson (MArch1)

Doga Esen (MArch1)

Chenyang Peng (MArch1)

Huimin Zhu (MArch1)

Eloise Phillips (BA1)

Lybah Tariq (BA1)

Xutianqi Wen (BA1)

Yara Abdulelah A Abulola (BA1)

Ayanna Jackson (BA2)

Jasmine Matthews (BA2)

Jimena Moreno Toledo (BA2)

Zihan Li (MLA1)

Wei Fan (MLA1)

Wenqian Yang (MLA1)

Partners

The Moston Miners Community Arts and Music Centre has played a key role in the community engagement within Moston since 2011. Backyard Social (MSA Group 25) aims to collaborate with this organisation to provide an external seating space to improve social inclusion within the community.

Since its opening in 2011, the centre has expanded to become a multifunctional community hub providing a café, a music space, a bar, an arts space, a recording studio, a cinema, and a gym. Louis and Paula, who run the venue, picked up the keys to the derelict former miners working men's club in 2011 and began renovating with the support of local friends. The project aimed to bring a historical building back to life and provide support and facilities for Moston's residents. This initiative provides for a variety of members within the community, and they are currently looking to develop this even further. The project is to create external seating space to form a social space for users of the gym and cinema at the back of the site.

Louis and Paula have acted as clients during this project and have been important in providing guidance and feedback throughout the duration of this project. Their personal passion for art and design has helped to develop this project further and helped create a clear vision during the design process.

The aim of this project was to unlock a key external space at the back of the site which has become the entrance to the hub's gym and cinema. It aims to provide external seating to improve social interaction between the users.

Agenda

Backyard Social

Our project brief was to design an external space at the rear of the site with the goal to provide a communal seating area between the gym and cinema spaces. The proposal seeks to promote sustainable community engagement and the use of natural materials. Through the use of planting, the design introduces green space at the back of the site which currently has very little. The final design provides an exciting communal space within an area of the site that is open and largely unoccupied.

The proposal is designed to convey a strong sense of community which is already abundant within the current Miners Community Centre. The communal seating area will utilise sustainable materials, natural planting, and a ramped access to improve accessibility around the site.

In collaboration with Louis and Paula, we have produced a set of drawings, images and a physical model which illustrates our proposal in the hope that it will lead to future construction. The project not only looks to provide a social space for the Miners Community Centre, but also the wider community of Moston.

SITE HISTORY

THE MINERS CLUB

Formally known as the Moston Colliery Pithead Baths, a miners wash house, whereby workers visited to bathe after working in Moston Pit.

In the 1850s, English composer John Stanley, opened the Moston Colliery coal mines - a lasting building that represented the industrialisation era of Moston.

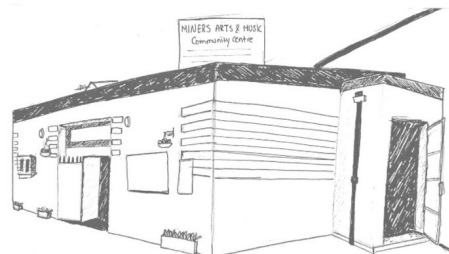
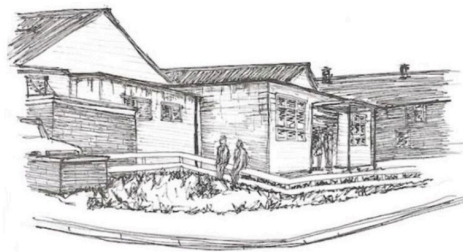
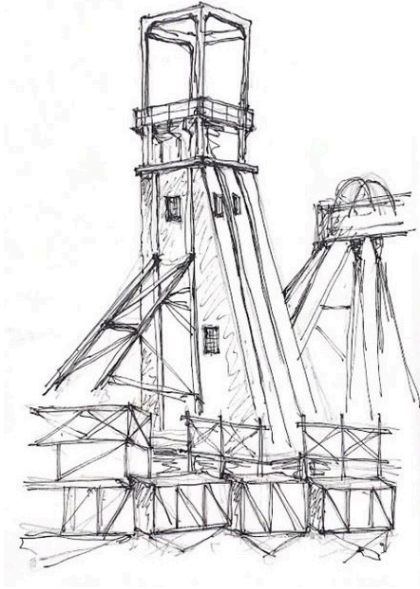
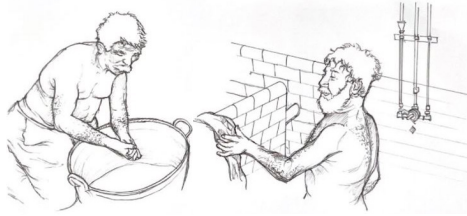
The mines proceeded to close in June 1950. Between 1955-1965 and the shafts within the mines were converted and used as a pumping station.

After the closure of the mines the building was converted from a community bathing house into a working men's club. The club provided men of lower class to relax, drink and occasionally watch live entertainment

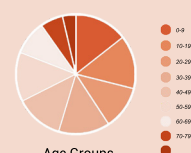
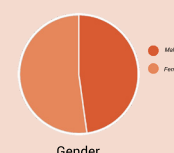
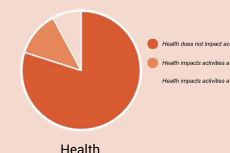
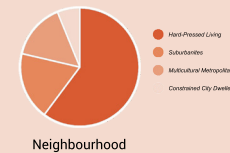
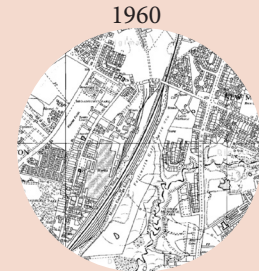
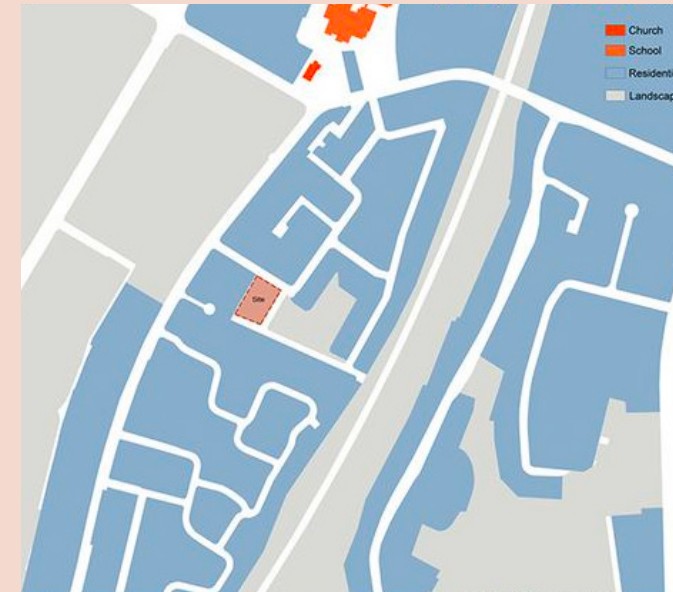
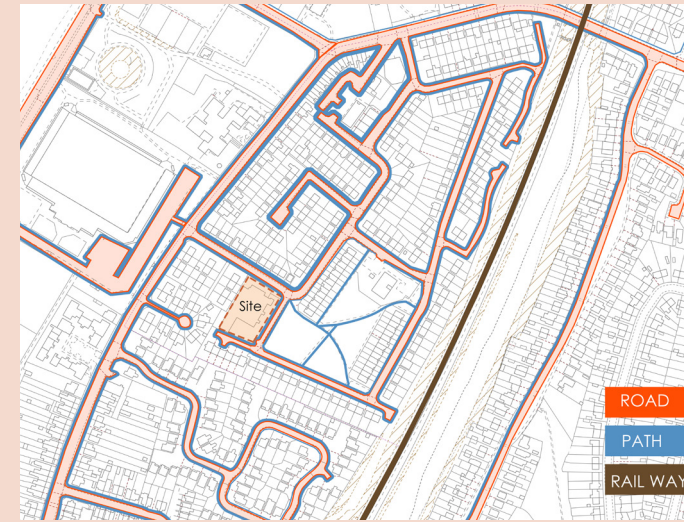
During the 1950s the building was converted into a pub. The owner tried to turn it into luxury apartments, but failed due to the mine shafts underneath.

In 2011, the building was revamped and renovated by artist Louis Beckett and the Northern Manchester community, as a multi-functional space for community socialising.

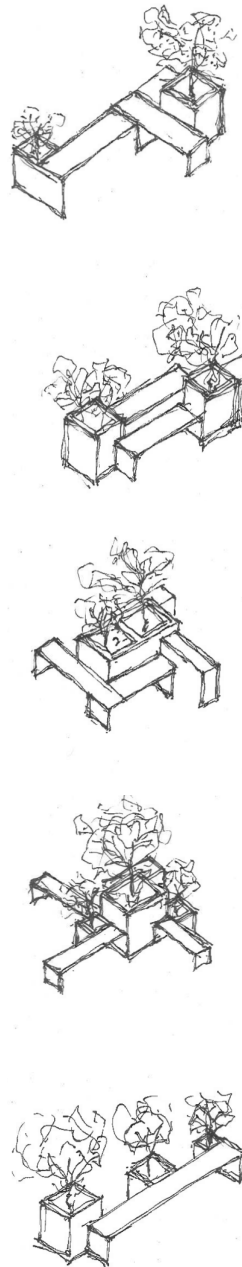
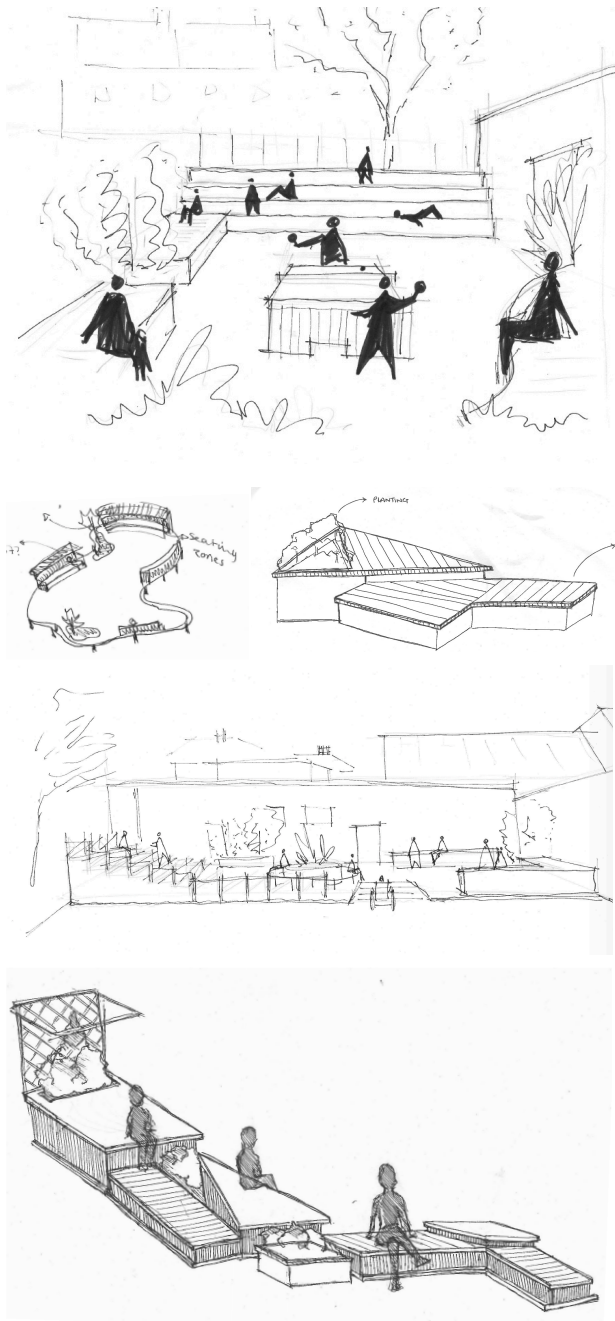
It now contains a community cafe, a function room with a stage, bars, art exhibition spaces, band rehearsal rooms, meeting rooms, games room, outside garden space, and a 70-seat cinema.



SITE ANALYSIS



CONCEPT SKETCHES



CONCEPT MODELS

1:50 MODELS

We created a series of concept models and sketches, to illustrate our initial response to the site and brief. The task helped visualise the scale of the building and its surrounding context, as well as being aware of how feasible the project is. The models were created both individually and in groups, and combined as one model, as seen in the middle set of photos. Some key design concepts arose from the task, an introduction of stepped seating, planters, decking and flexibility.



THREE DEVELOPMENT SCHEMES

Three different groups came up with development schemes based off our initial concept sketches, to give the Miners Community Centre a chance to pick aspects of each design they believed responded best to the site.

CONCEPT 1

This design concept maximises the space on the site, by providing two seating areas with a green screen partitioning and levelled seating. The space uses curves in its walkway, between decking, to create fluidity in movement with the surrounding site.

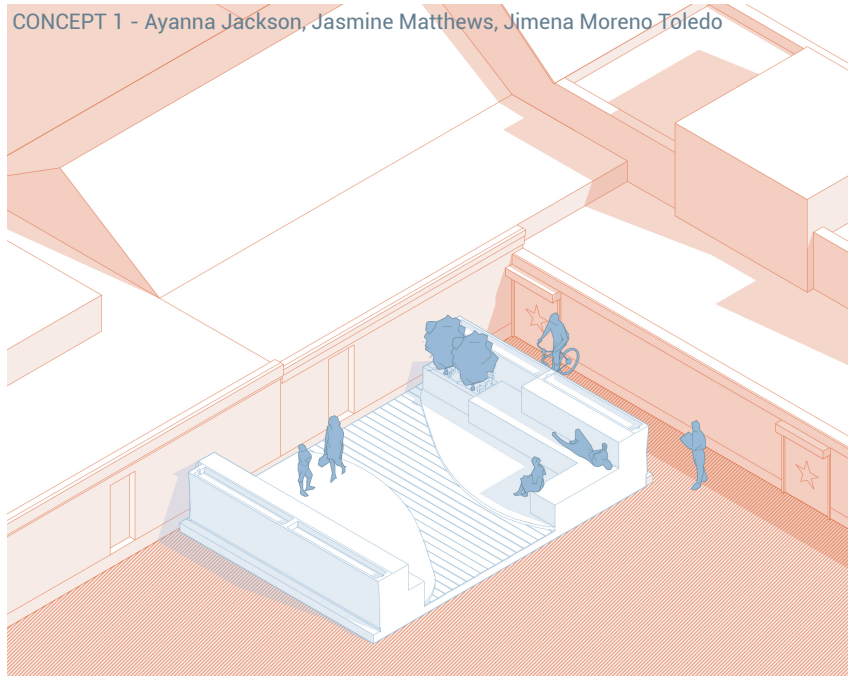
CONCEPT 2

A small communal area that houses both tiered seating and benches with planters, they have a blocky design to match the more industrial feel of the site (built with brick and timber), protected overhead by a canopy for rainwater collection. We wanted to be able to hold a large number of people in a comfortable community space, hence the stair style seating areas with communal tables rather than just singular chairs.

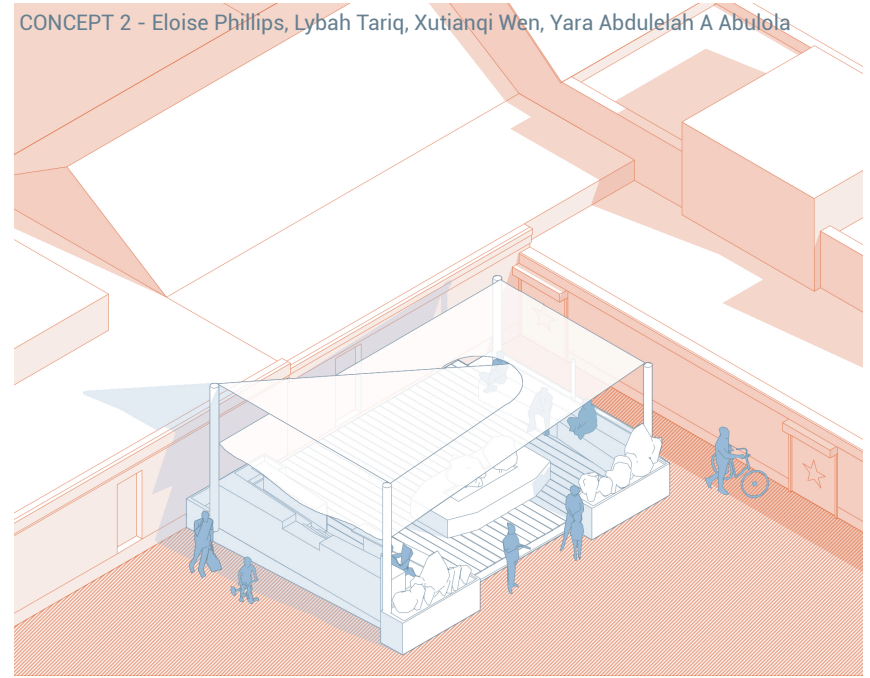
CONCEPT 3

This design concept was to form a square of seating around a green space, adding a canopy to provide shelter during the winter. The upright pillars create more open space to enter and exit the seating freely. The idea for the seating came from the keys of a piano, influenced by the community centre's passion for music.

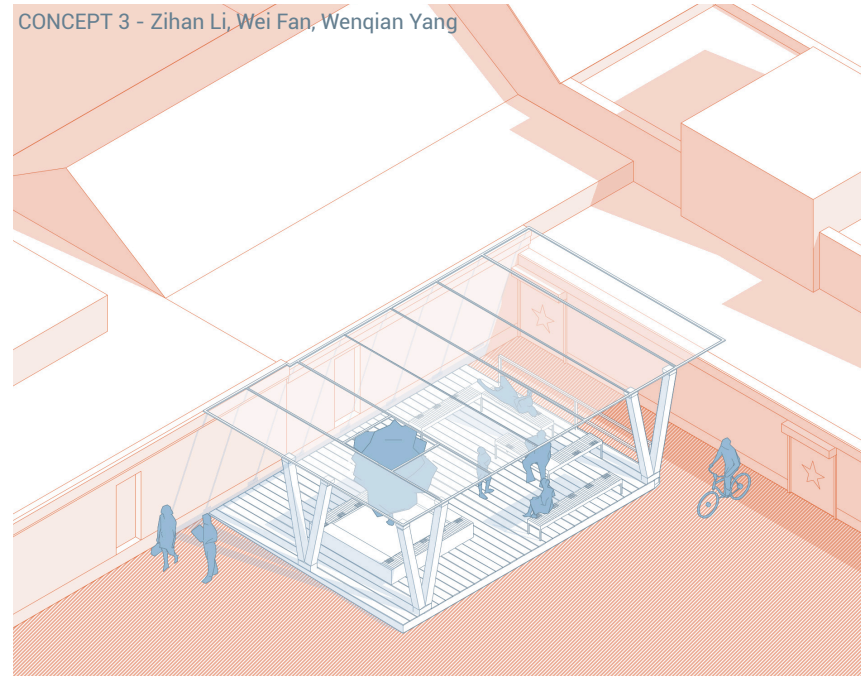
CONCEPT 1 - Ayanna Jackson, Jasmine Matthews, Jimena Moreno Toledo



CONCEPT 2 - Eloise Phillips, Lybah Tariq, Xutianqi Wen, Yara Abdulolah A Abulola



CONCEPT 3 - Zihan Li, Wei Fan, Wenqian Yang

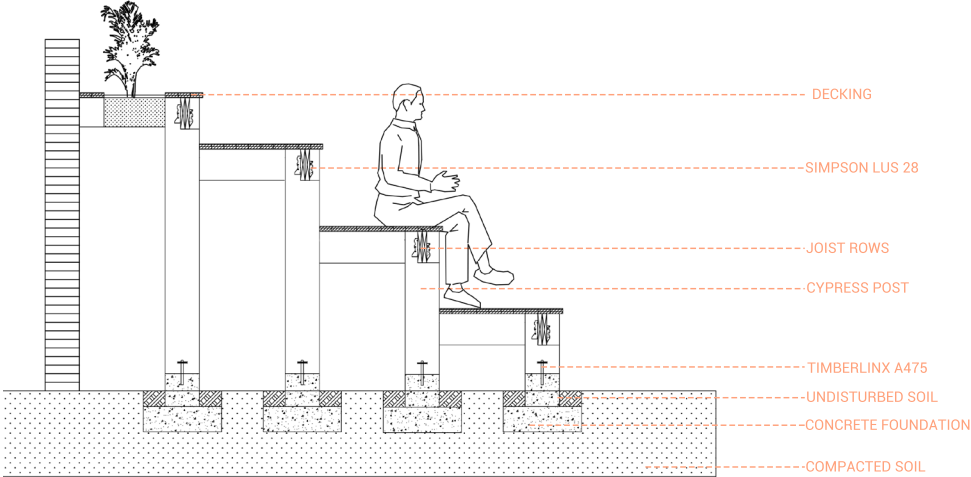


FINAL DESIGN

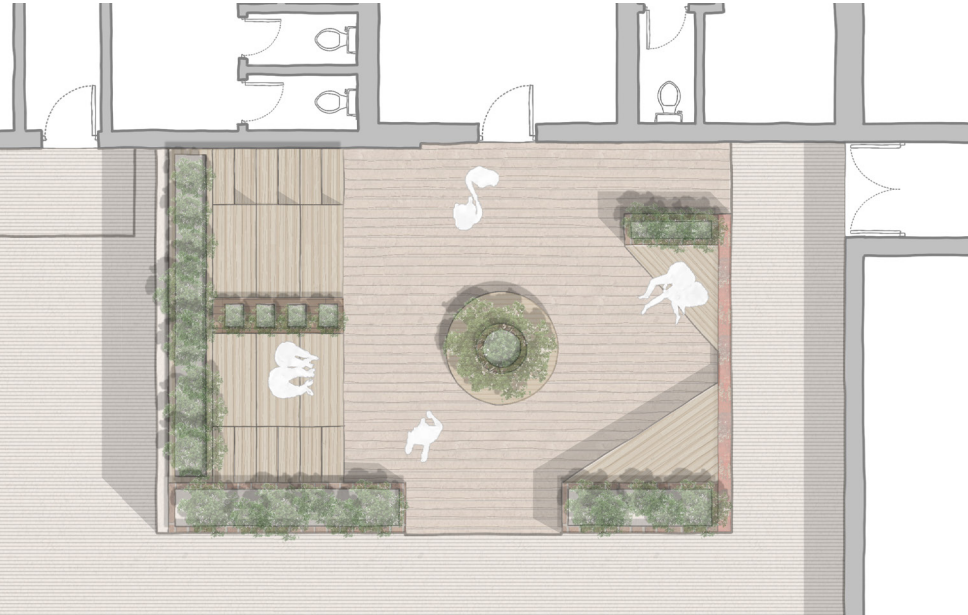


Sketch

Illustrated in the floor plan and perspective drawing below, we have incorporated a series of seated elements in the courtyard space at the Miners Community and Arts Centre. A tiered seating area forms the main meeting space for the users and acts as a partition between public and private areas. Similarly, circular and triangular planters/seating breaks up the rigidity of the courtyard. We have integrated an abundance of greenery within the communal space, providing a pleasant experience for users whilst occupying the space.



Construction detail



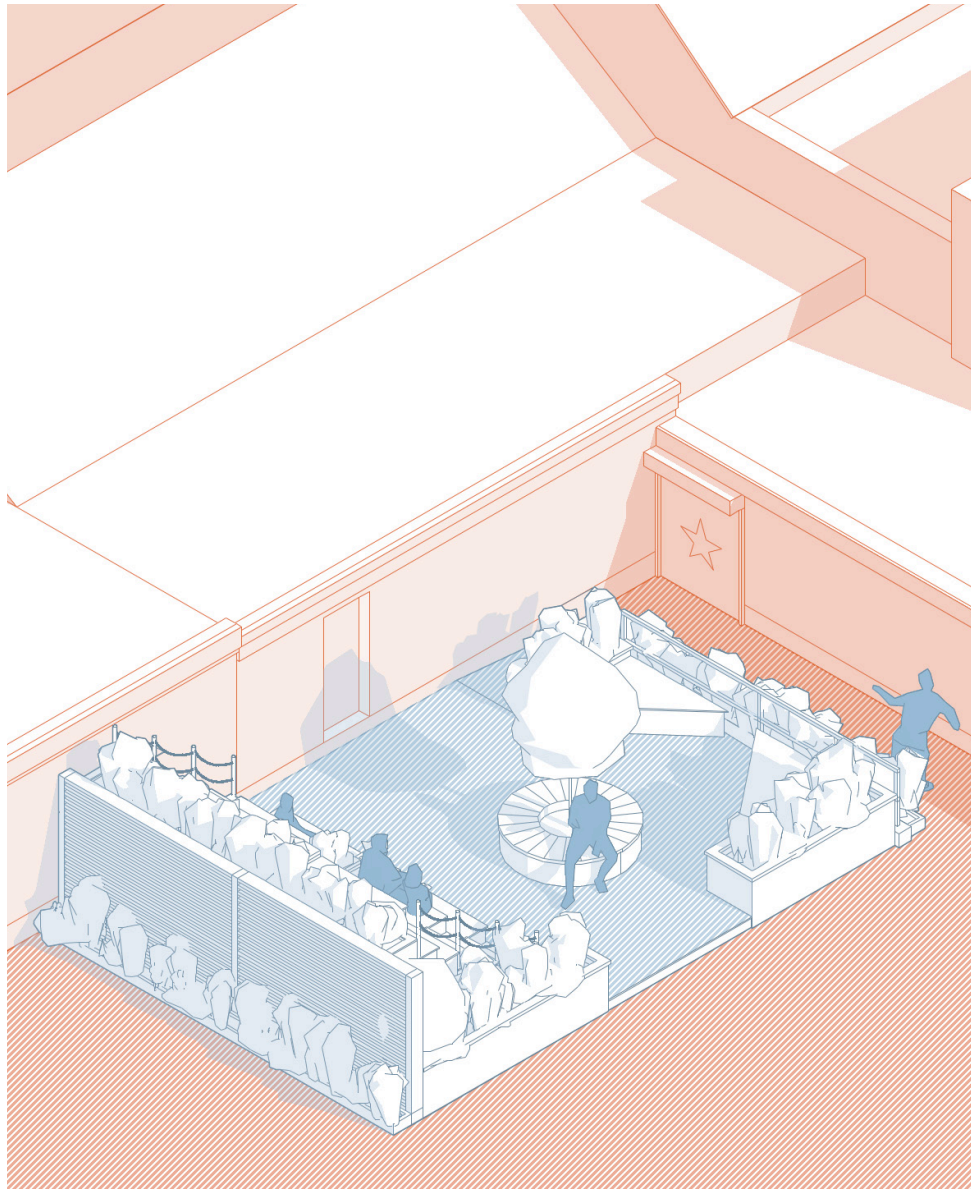
Site Plan



Elevation

ISOMETRIC

A simple material palette was used to create a more affordable proposal, with the use of reclaimed bricks, timber panels and rope balustrades, creating a feasible project for the centre on a small budget.



RENDERS



There were limited space restraints within the brief, therefore we have proposed a timber decked plinth that sits on the existing concrete, reducing demolition costs and correcting the level changes on site.



The existing handrail to the North of the site was retained and used as a climber for the proposed new planters, painted to match the orange of the existing doors.



We have proposed a low maintenance meadow seed, which can help boost pollinator numbers as well as being beneficial to insects, predators and birds, with the added benefit of being able to save and sell the seeds

FINAL MODEL

The final model was constructed at a 1:50 scale, an appropriate size to hand over to the client at the end of the process. The existing building was hand-cut and constructed from MDF components and smaller grey card details, providing an accurate representation of the existing condition. The proposal for the seating area was laser cut with MDF and decorated with foliage allowing for a more precise and realistic representation. The MDF was left untreated to convey the timber elements from which it would be constructed from. Each element of the model can be moved around the plinth, allowing the client to produce a variety of different configurations of space.



Reflection

Over the duration of this project, we have worked collaboratively as a group and with the client. The client's input has been a huge influence on the design process and has helped us reach a final concept. Throughout the project, we conducted a number of site visits as a group and met with Louis and Paula to refine the brief further. However, due to unforeseen circumstances, we were unable to receive feedback from the client and present it to them personally. We hope to meet up with the client in the future to present the finished project and hand over the physical model and publication. With this feedback, we can discuss the possibility of construction in the hope that it can be built in the near future.

ABOUT

Each year the MSA LIVE programme unites Masters Architecture year 1 students with those in BA year 1 and year 2 and Masters Landscape Architecture 1 in mixed-year teams to undertake live projects with external partners to create social impact.

LIVE PROJECTS

All MSA LIVE projects are live. A live project is where an educational organisation and an external partner develop a brief, timescale, and outcome for their mutual benefit.

SOCIAL IMPACT

All MSA LIVE projects have social impact. Social impact is the effect an organization's actions have on the well-being of a community. Our agendas are set by our external collaborators.

EXTERNAL PARTNERS

MSA LIVE projects work with many organisations: charities, community groups, social enterprises, community interest companies, researchers, practitioners and educators.

STUDENT-LED

Our MSA masters students take the lead in the project conception, brief development, delivery and co-ordination of a small project. Other cohorts joined for an eventful 2 weeks of activities at the end of the academic year.

KNOWLEDGE TRANSFER

Working in teams within and across year groups and courses; MSA students participate in peer to peer learning. In addition, collaborators, participants and students engage in the transfer of tangible and intellectual property, expertise, learning and skills.

LARGE SCALE

This year approximately 650 students from 4 cohorts in MSA have worked on 42 projects with partners.

QUESTIONS

For questions about MSA LIVE please contact the MSA LIVE team:

msalive@mmu.ac.uk

BLOG

live.msa.ac.uk/2023

SOCIAL

#MSALive23

@msa.live.23

@TheMSArch

@MLA_TheMSArch

WEBSITE

www.msa.ac.uk