

MANCHESTER SCHOOL OF ARCHITECTURE

Havenscape Castle



Visit msa.ac.uk for more information



PATRICROFT
COMMUNITY GROUP CIC



MSA LIVE 23

Team

Alessandro Porchietto (MArch1)

Katerina Loukaidou (MArch1)

Jiandong Yu (MArch1)

Ningmei Jiang (MArch1)

Zeyneb Caglar (MArch1)

Yeva Taylor-Skvortsova (BA1)

Carmen Morzaria (BA1)

Ali Babagana Alkali (BA1)

Christina Georgescu (BA1)

Connie Bellass (BA1)

Emily Martin (BA2)

Madeline Mcivor (BA2)

Shreya Goyal (BA2)

Munir Sharif (BA2)

Ndagire Lwanga (BA2)

Zeshan Zhang (MLA1)

Partners

The Castle Community Centre is run by Patricroft Community Group CIC and is also the home of The Castle & Ivy Park Community Association. They are there to listen and respond to the community's needs. They want to do all that they can to make the area a great place to live.

They have six directors Judy, Dave, Paul, David, Daryl and Graham, who oversee the running of the building, organise activities and projects. They have all worked in the area for many years and five of the directors live in Eccles. They all share a commitment to supporting the community and everyone who lives here. They are always working with other organisations, building their links and working together with them so that they can look at how they can improve the centre and do more activities now and in the future.

Agenda

Havenscape Castle

We are a student-led team working in collaboration with The Castle Community Centre, which is run by Patricroft Community Group (CIC) in Eccles. The Castle offers a safe place for people of all ages and backgrounds to come together as a community to play, learn, and work. The refurbishment of this community building seeks to improve the existing facilities in order to offer greater quality, flexibility and healthier spaces for different interest community groups to meet.

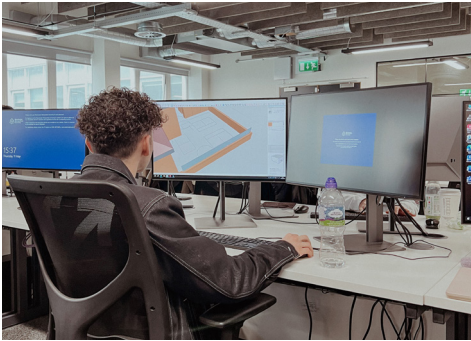
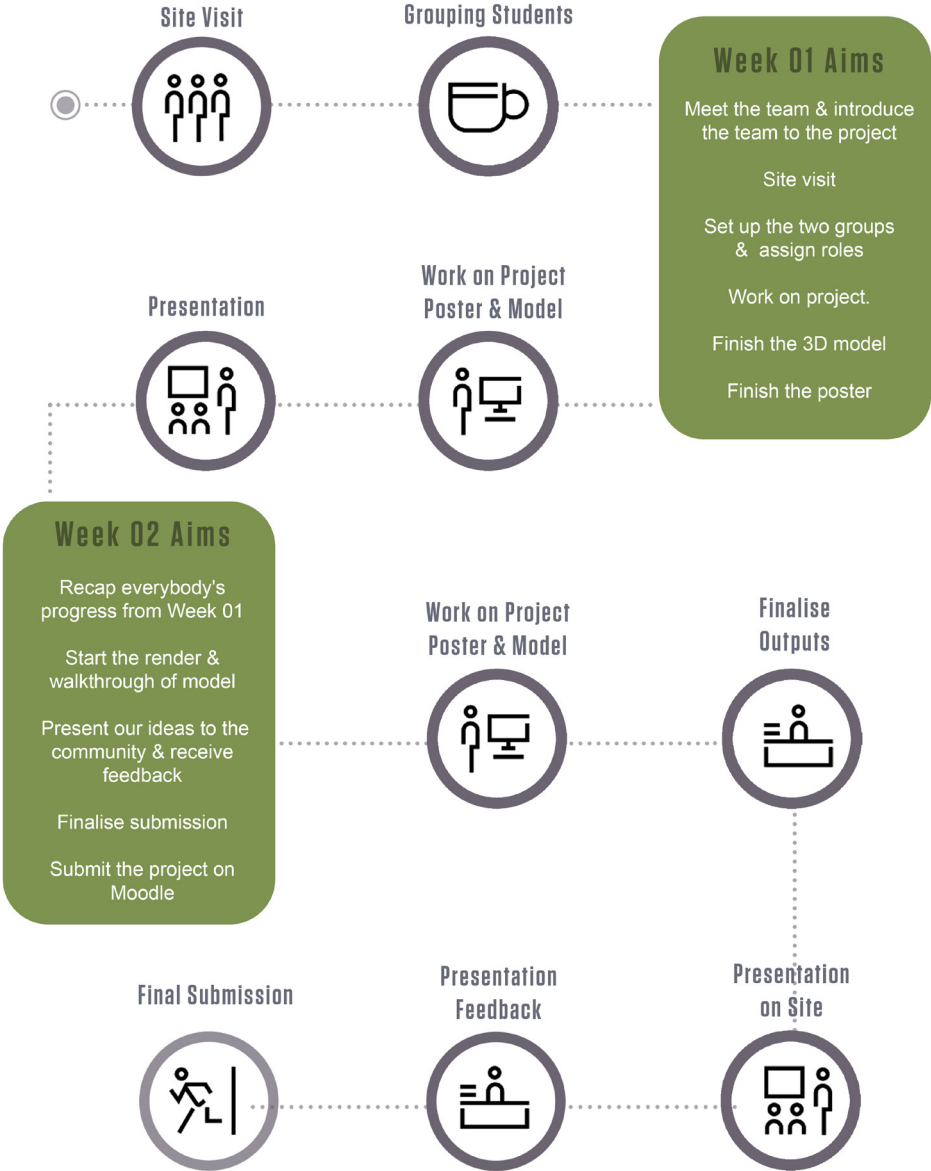
Additionally, the retrofit aspect of the project intends to improve the energy efficiency of the building by addressing deficiencies of the building fabric, as well as the existing heating and ventilations systems. Our role is to assist the Community Centre with their planning application through the production of visualisation drawings of the refurbished spaces!

The Castle

The Castle is a beloved community centre, supported by locals. It provides a safe space for people of all backgrounds to gather, fostering community spirit through play, learning, and collaboration. Through community consultation, we've seen The Castle's immense value and importance to the local area. To enhance the overall building, they are refurbishing The Castle, in order to improve the facilities to provide higher quality, more flexible, and healthier spaces for diverse community groups. This project not only empowers and strengthens their community but also involves community workshops, especially for young people, focusing on subjects like sustainability and the construction industry. They are also home to various youth groups and after school clubs.



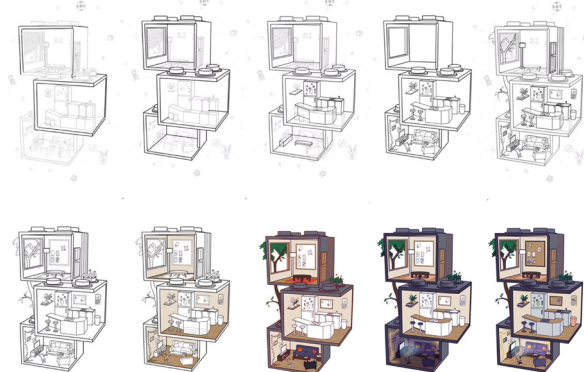
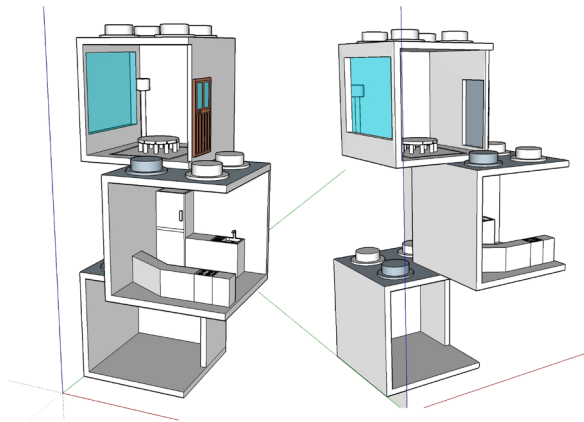
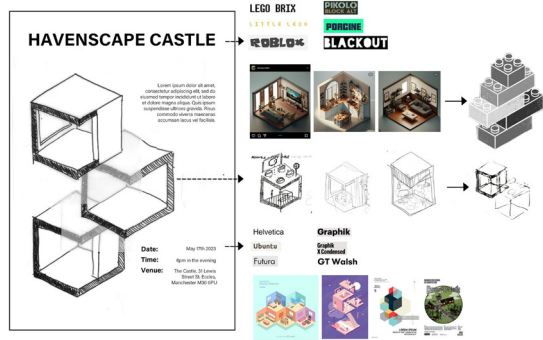
Project Timeline



Promotional Poster

The creation of our promotional poster for The Castle Community Centre presentation involved a thoughtful and creative process. We began by coming up with various visual concepts to ensure an engaging design that would attract attention. Through consideration of colour schemes, typography, and imagery, we aimed to develop a design that effectively communicated the transformative nature of the project.

Collaborative discussions and feedback from our team helped refine the layout and composition. We finally came up with a visually appealing poster that invites the community to learn more about the upcoming presentation. We successfully followed our action plan and managed to complete the promotional poster as scheduled.



HAVENSCAPE CASTLE



Calling all community members! We are a student-led team from Manchester School of Architecture working in collaboration with The Castle Community Centre.

Join us as we present exciting renovations that will enhance your experience at The Castle.

Mark your calendars and experience firsthand how this transformative space will ignite creativity, foster friendships, and inspire the entire community!

DATE: May 17th 2023

TIME: 6pm

LOCATION: The Castle, 29-31 Lewis Street, Eccles, Manchester M30 0PU



Design Development

Conceptual Moodboards

After a successful and productive Week 1, we continued to follow the action plan and aimed to finish furnishing the 3D model. Furthermore, our BA students worked on the production of atmospheric moodboards to present to the collaborators. They

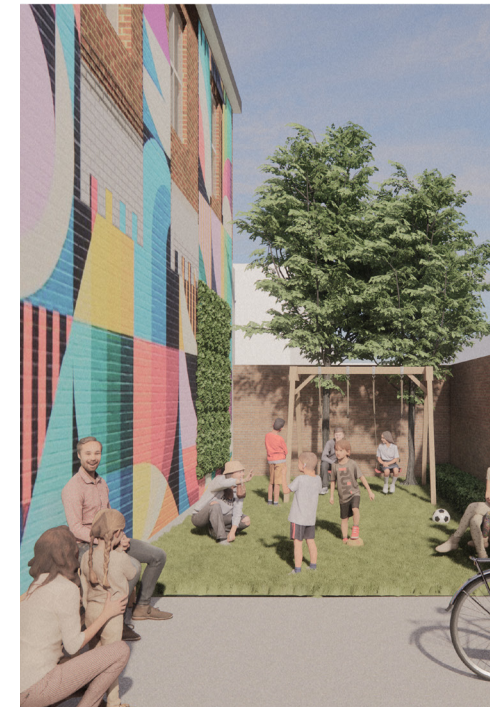
Interior Views

Initially, we drafted Enscape visuals and post-production views. This helped the team to create different spaces, so that we can come up with ideas to incorporate in the final views.

After the initial visuals were complete, we added them to the

looked at different colour palettes that are known to create a relaxing atmosphere for the common community spaces, as well as flexible furniture proposals that can be arranged in different ways based on each community activity.

final presentation to showcase the community our development process and our thinking strategy. Showing all of our ideas together is also helpful because they can refer back to them, in case they want to change or expand their spaces further in the future.



Final Design

Apart from creating a 3D model of the proposed building, our project's second output involved supporting the Community Centre in their funding efforts. To help in this, we developed proposed renders of the refurbished spaces. Incorporating the valuable feedback received during the Community Presentation, we responded and revised the final renders according to the comments.

The images showcase the proposed garden and roof terrace. We collaborated with the architect to furnish the spaces, hoping to create an inviting environmental for all community members to feel safe and relaxed.

The roof terrace presents an exciting opportunity for the Community Centre to maximise its potential. With the inclusion of sensory walls, planters, and vegetable gardens, the roof terrace is a highlight not only to the castle but to the surrounding homes as it adds greenery to the whole area.

Through these final images, we hope to secure the necessary funding required and aid in bringing these visions to life, fostering a sense of unity and pride.



Presentation Day

For the presentation on 17th May, we sent the designed poster in advance to our collaborators, attracting families and children to attend. We introduced MSA Live and the team members that worked on the project, sharing our objectives and showing our final renders and a walkthrough. In between, we showcased our collaboration process, from meetings to the community event and poster design process.

The presentation was really successful and exceeded our expectations as the children were engaged and had many questions and suggestions. After the feedback from the community, we proceeded to have a separate meeting with Dave and Alicia to discuss any further changes. We made these changes the next day and prepared for the final submission.



Reflections

Reflecting on our project, we feel that we have accomplished the outputs that we agreed on with the collaborators. Each team member showed dedication and creative thinking, which allowed us to problem-solve and overcome any challenges that we faced.

It was great to see that the children and the rest of the community loved our project. The positive feedback we received and the thought provoking questions from the community validated our efforts.

This experience has not only enhanced our individual skills but also demonstrated the importance of teamwork, creativity, and community involvement.

We are grateful for this opportunity to contribute to something meaningful and we look forward to seeing how the Castle will look like in the future. As a team, we were very inspired by Dave and Judy's passion to have such a wonderful impact on the community, by providing a safe and inclusive environment.



ABOUT

Each year the MSA LIVE programme unites Masters Architecture year 1 students with those in BA year 1 and year 2 and Masters Landscape Architecture 1 in mixed-year teams to undertake live projects with external partners to create social impact.

LIVE PROJECTS

All MSA LIVE projects are live. A live project is where an educational organisation and an external partner develop a brief, timescale, and outcome for their mutual benefit.

SOCIAL IMPACT

All MSA LIVE projects have social impact. Social impact is the effect an organization's actions have on the well-being of a community. Our agendas are set by our external collaborators.

EXTERNAL PARTNERS

MSA LIVE projects work with many organisations: charities, community groups, social enterprises, community interest companies, researchers, practitioners and educators.

STUDENT-LED

Our MSA masters students take the lead in the project conception, brief development, delivery and co-ordination of a small project. Other cohorts joined for an eventful 2 weeks of activities at the end of the academic year.

KNOWLEDGE TRANSFER

Working in teams within and across year groups and courses; MSA students participate in peer to peer learning. In addition, collaborators, participants and students engage in the transfer of tangible and intellectual property, expertise, learning and skills.

LARGE SCALE

This year approximately 650 students from 4 cohorts in MSA have worked on 42 projects with partners.

QUESTIONS

For questions about MSA LIVE please contact the MSA LIVE team:

msalive@mmu.ac.uk

BLOG

live.msa.ac.uk/2023

SOCIAL

#MSALive23

@msa.live.23

@TheMSArch

@MLA_TheMSArch

WEBSITE

www.msa.ac.uk