

**MANCHESTER SCHOOL
OF ARCHITECTURE**

**RE-IMAGINING
WESTCROFT**



VISITMSA.AC.UK FOR MORE INFORMATION



**MSA
LIVE**

OUR TEAM:

EVA JAIN (MARCH1)

CHING WEI LEONG (MARCH1)

NIKHIL BHAGWAT (MARCH1)

YUKAN ZHU (MARCH1)

SHOLA AKINYELE (MARCH1)

AMAL ABDALLA ELHAG ALI (BA1)

THET HTAR (BA1)

SAUDI CO (BA1)

CRISTINA PULIDO (BA2)

ISOBEL EVANS (BA2)

SARAH PENNEY (BA2)

LUCY LEES (BA2)

PARTNERS



AGENDA

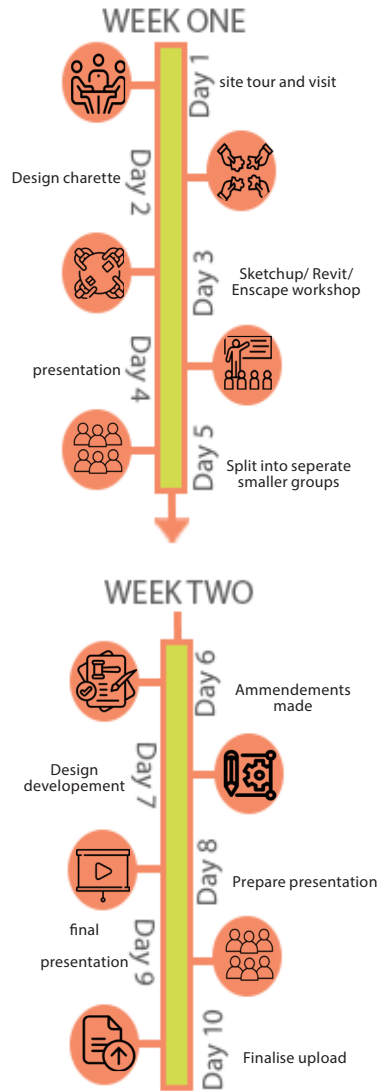
We are 'Re-imagining Westcroft', a student led MSA team working collaboratively with The Westcroft Community Centre, Manchester. The group is committed to empowering, inspiring and improving the local community of Burnage through our imaginative design.

The Community Centre is a vibrant community space in the heart of Burnage, South Manchester. It is committed to empowering, inspiring and improving the local community of Burnage. The primary objective of the project is to develop a proposal for the renovation of the existing space of Westcroft into a multi-activity space, enabling the Community Centre to meet the diverse needs of their visitors. Secondly, the project aims to reimagine and redesign the parking lot at the rear of the building, thus providing the Centre with additional activity space. The expanded outdoor space will enable the Centre to cater to multiple activities at once and amplify their reach to the community by expanding on the services provided by them. The new envisioned proposal will also enable the Centre to rent the space out for an additional source of income generation without compromising their primary purpose as a Community Centre. The project aims to provide Westcroft Community Centre a wider reach into the hearts of the community and help the Centre to be and do more than they already are. If you want to make a difference through design, come, join us on this journey to better the community.

WESTCROFT COMMUNITY CENTRE

OUR PROCESS

In the first week, a design concept was produced and a brief was defined, this included re-designing the outdoor area, activity space, offices, stairs, kitchen, and the first floor as we believed these were the spaces that had the most potential to re-imagine Westcroft. In the second week, BA students were then split into teams: 'Visuals' or 'Presentation', based on their strengths and personal preferences.



IDENTIFIED ISSUES



A SMALL COMMUNITY KITCHEN



SMALL MEETING ROOMS



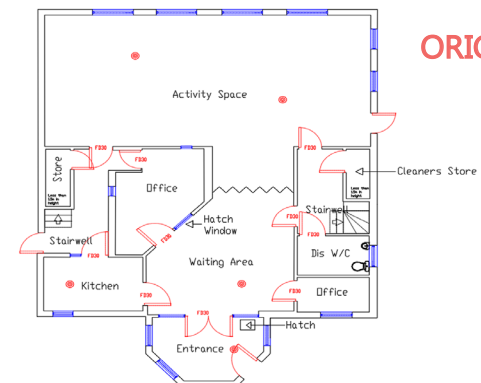
LACK OF STORAGE



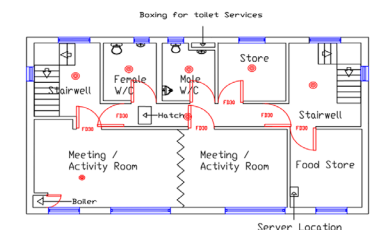
CONGESTED



LACK OF SPACE



ORIGINAL FLOOR PLANS



FIELD TRIP

PROUD TRUST

The proud trust is a charity and community centre providing education, support, and advocacy for the lgbt+ community, they work on creating a better support network for their community as well as providing opportunities to bring their people together through events. Visiting the centre gave our group a good understanding of what a community centre should feel like and we went on to use the building as a precedent study for our design development.



DESIGN INSPIRATION



Roof lights

*Rooms are able to have access to natural day light space feels more open and airy. Rooms are able to have access to natural day light space feels more open and airy.



Community garden

*The garden is a place celebration and for the community to come together on events.



Reading spaces

*The library is a quiet and safe space for user's to unwind and relax while reading



Sliding doors

Sliding and folding thick partitions can be placed and removed to make space private or public.



Community garden

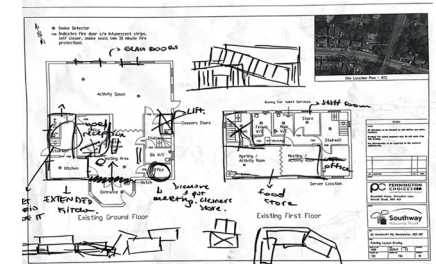
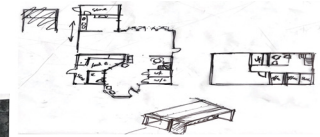
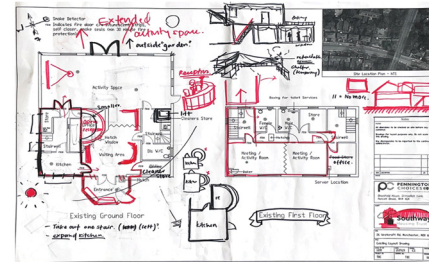
*Sliding and folding thick partitions can be placed and removed to make space private or public.

DESIGN CHARRETTE

DESIGN DEVELOPEMENT



INITIAL DESIGN IDEAS



MATERIALS & FINISHES



KITCHEN



OFFICE SPACE



ACTIVITY SCPACE

FIRST PROPOSAL

OPTION 1



The first-floor plan proposal included extending the ground level out into the outdoor space, opening up the entrance area, removing one stair case as well as having the kitchen attached to the activity space allowing communal cooking to take place.

EXTENSION OPTIONS



Option one:
Brick facade with murals by the community



Option two:
Steel mesh and glass facade to improve the light penetration through the building with steel frame and plant accents



Option three:
Timber slats with glass roof

OPTION 2

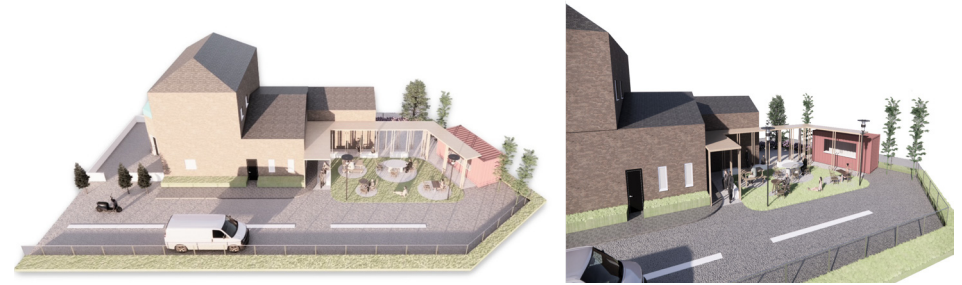


The second plan proposal offers a more reserved option as the client had expressed to us at the first meeting that their budget was tight. The second option extended the kitchen, removed the right staircase, as well as adding foldable walls that separate the

OUTDOOR DEVELOPEMENT

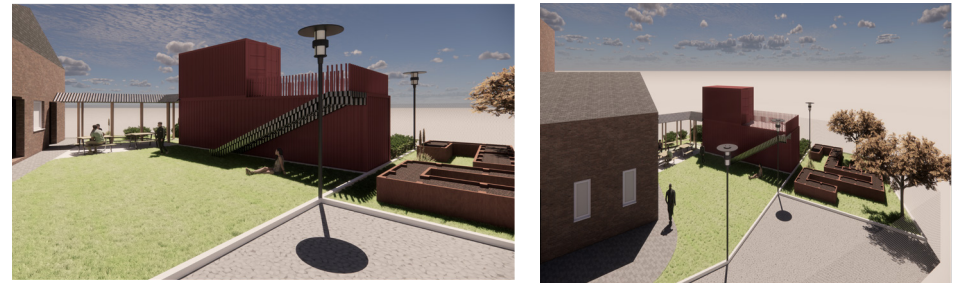
OPTION 1

The first option for the outdoor area utilises the existing space that is currently used as a car park, the space offers an outdoor seating area for the building users as well as adding a shipping container that will house the floor for the centres 'quids in programme' which is currently based on level one of the building. The proposed canopy creates links to the building and offers shading for the outdoor space.

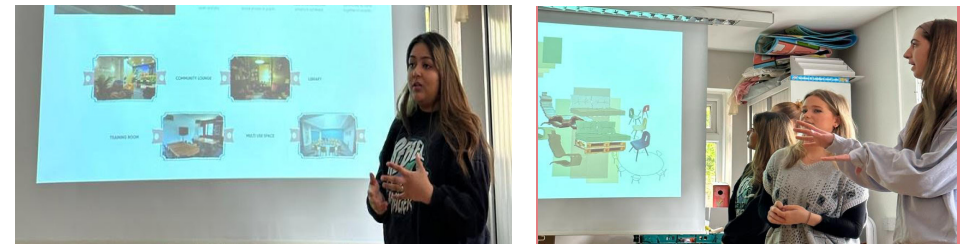


OPTION 2

The second option for the outdoor area is slightly more ambitious, an extra shipping container has been stacked on top of the original proposed design to create more space for the centre and create a possible roof garden. Additional growing space has been added to allow for users to grow and sell fresh produce.



PRESENTING TO THE COMMUNITY:



THE FEEDBACK



Added lift required to create disabled access to the upper floor



Budget cannot support the option of adding an extension



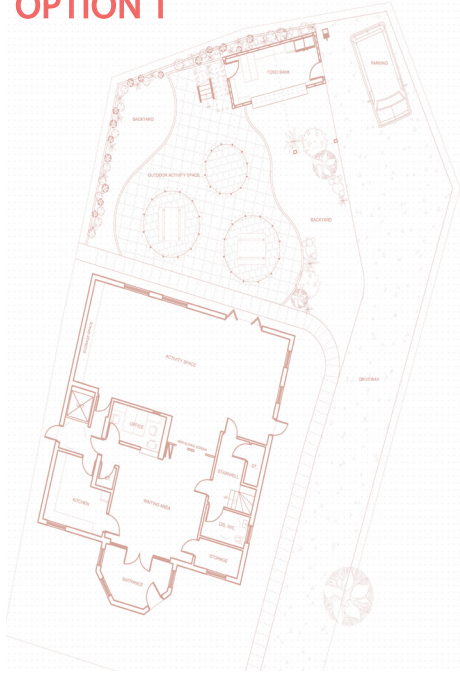
Larger kitchen to create a space for collective cooking



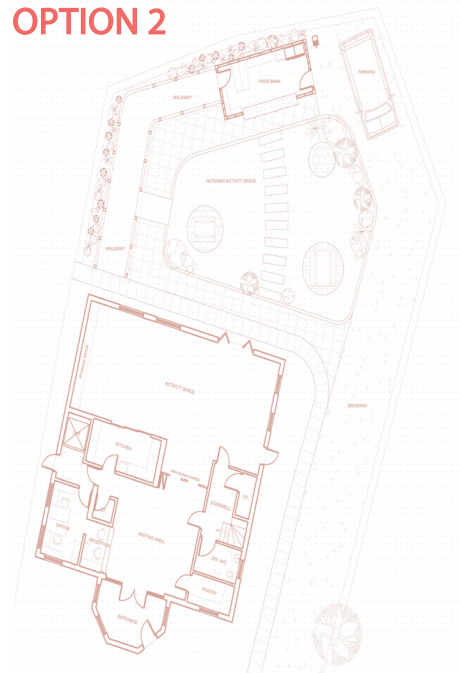
How can we make the design more sustainable and carbon neutral?

FINAL PROPOSAL

OPTION 1



OPTION 2



NEW & DEMOLISHED



PROGRAMMING AND ANALYSIS

OPTION 1

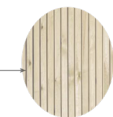
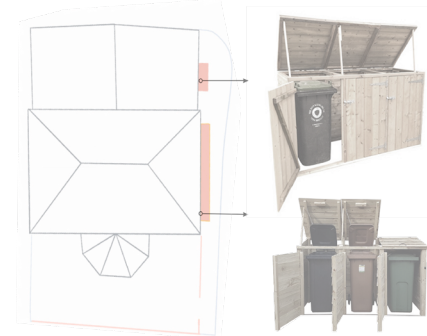


OPTION 2



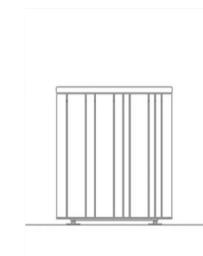
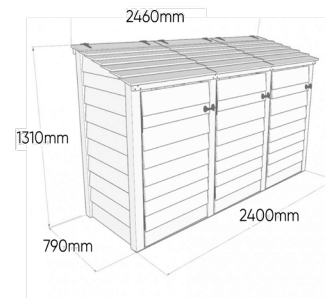
BIN SHED DESIGN

To enhance the outdoor space, planters can be strategically placed across the outer surface, offering multiple benefits such as additional growing space and transforming the aesthetics of the place. There are chains connecting the bin lids to external wooden frame make it easy and effective to use as well as a minimal physical touch functioning bin for more hygienic use.



Materiality

1. Reclaimed timber
2. Reworked crates (in Manchester)



To transform the currently congested and outdoor space, we can implement a simple bin solution that addresses the issue of bins and crates. By doing so, we can elevate the outdoor space and create a welcoming environment.

RENDERED VISUALISATION

INTERNAL



ACTIVITY SPACE



OFFICE



KITCHEN



OUTDOOR OPTION ONE

RENDERED VISUALISATION

EXTERNAL

OPTION 1-



OPTION 2-



ABOUT

EACH YEAR THE MSA LIVE PROGRAMME UNITES MASTERS ARCHITECTURE YEAR 1 STUDENTS WITH THOSE IN BA YEAR 1 AND YEAR 2 AND MASTERS LANDSCAPE ARCHITECTURE 1 IN MIXED-YEAR TEAMS TO UNDERTAKE LIVE PROJECTS WITH EXTERNAL PARTNERS TO CREATE SOCIAL IMPACT.

LIVE PROJECTS

ALL MSA LIVE PROJECTS ARE LIVE. A LIVE PROJECT IS WHERE AN EDUCATIONAL ORGANISATION AND AN EXTERNAL PARTNER DEVELOP A BRIEF, TIMESCALE, AND OUTCOME FOR THEIR MUTUAL BENEFIT.

SOCIAL IMPACT

ALL MSA LIVE PROJECTS HAVE SOCIAL IMPACT. SOCIAL IMPACT IS THE EFFECT AN ORGANIZATION'S ACTIONS HAVE ON THE WELL-BEING OF A COMMUNITY. OUR AGENDAS ARE SET BY OUR EXTERNAL COLLABORATORS.

EXTERNAL PARTNERS

MSA LIVE PROJECTS WORK WITH MANY ORGANISATIONS: CHARITIES, COMMUNITY GROUPS, SOCIAL ENTERPRISES, COMMUNITY INTEREST COMPANIES, RESEARCHERS, PRACTITIONERS AND EDUCATORS.

STUDENT-LED

OUR MSA MASTERS STUDENTS TAKE THE LEAD IN THE PROJECT CONCEPTION, BRIEF DEVELOPMENT, DELIVERY AND CO-ORDINATION OF A SMALL PROJECT. OTHER COHORTS JOINED FOR AN EVENTFUL 2 WEEKS OF ACTIVITIES AT THE END OF THE ACADEMIC YEAR.

KNOWLEDGETRANSFER

WORKING IN TEAMS WITHIN AND ACROSS YEAR GROUPS AND COURSES; MSA STUDENTS PARTICIPATE IN PEER TO PEER LEARNING. IN ADDITION, COLLABORATORS, PARTICIPANTS AND STUDENTS ENGAGE IN THE TRANSFER OF TANGIBLE AND INTELLECTUAL PROPERTY, EXPERTISE, LEARNING AND SKILLS.

LARGE SCALE

THIS YEAR APPROXIMATELY 650 STUDENTS FROM 4 COHORTS IN MSA HAVE WORKED ON 42 PROJECTS WITH PARTNERS.

QUESTIONS

FOR QUESTIONS ABOUT MSA

