

MANCHESTER SCHOOL
OF ARCHITECTURE

RIGHTS TO THE STREETS

Visit msa.ac.uk for more information

MANCHESTER
1824
The University of Manchester



Manchester
Metropolitan
University

Greater Manchester
Moving > < < >

Right to
the Streets

MSA
LIVE 23

Team

Chloe Roberts (MArch1)

Jonathan Burtan (MArch1)

Kelly Ka Wai Lui (MArch1)

Norsyazwina Binti Jamal (MArch1)

Syarifah Alysha Binti Syed Abd-Rahman (MArch1)

Tengku Nurul Nasfakhira Binti Tengku - Nasrudin (MArch1)

Zhifan Wei (BA1)

Alicia Booth (BA1)

Ruiyi Liu (BA1)

Zenani Nkosi-Rawles (BA1)

Samuel Golaub (BA21)

Reem Taha (BA1)

Haneen Hamad S Alhoqail (BA2)

Jessica Watson (BA2)

Yiran Chen (BA2)

Sara Cama (BA2)

Jiaxu Zhou (BA2)

Partners

The main client for this project is Greater Sport & Greater Manchester Moving. They are a charity in Manchester that targets in making public spaces more accessible to sport, movement, and physical activity. Their main manifestos are to support and connect people through different infrastructure and events. The key partners for this upcoming project *Rights to the Streets*, includes the Trafford Council, OpenData Manchester, Publica, Diva Creative and Mic Media. To meet their manifestos, the group Greater Sport implements a number of interventions, such as involving community art groups into the project like Publica and organising walks and cycle rides.

The organisation Open Data Manchester often hold walks every month, this enables people to understand the problems within the space and initiated the conversation of how to provide safer streets for women. According to the data collected by the client through these walks and information from the Trafford Council, Trafford was shown as a district that needed to implement safer solutions for women, as there were numerous records of sexual harassment and violence against this gender.

Working with Publica a local artist, the client has collected information regarding how women feel unsafe and unwelcomed in a space. They have generated several cards highlighting the problems which they face in public, in which falls under three themes: not having enough active infrastructure, not being safe enough and a lack of inclusiveness.

Agenda

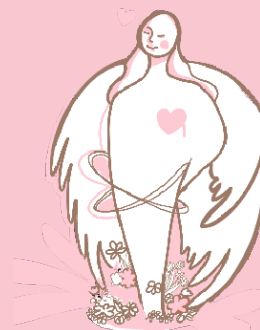
Rights to the Streets

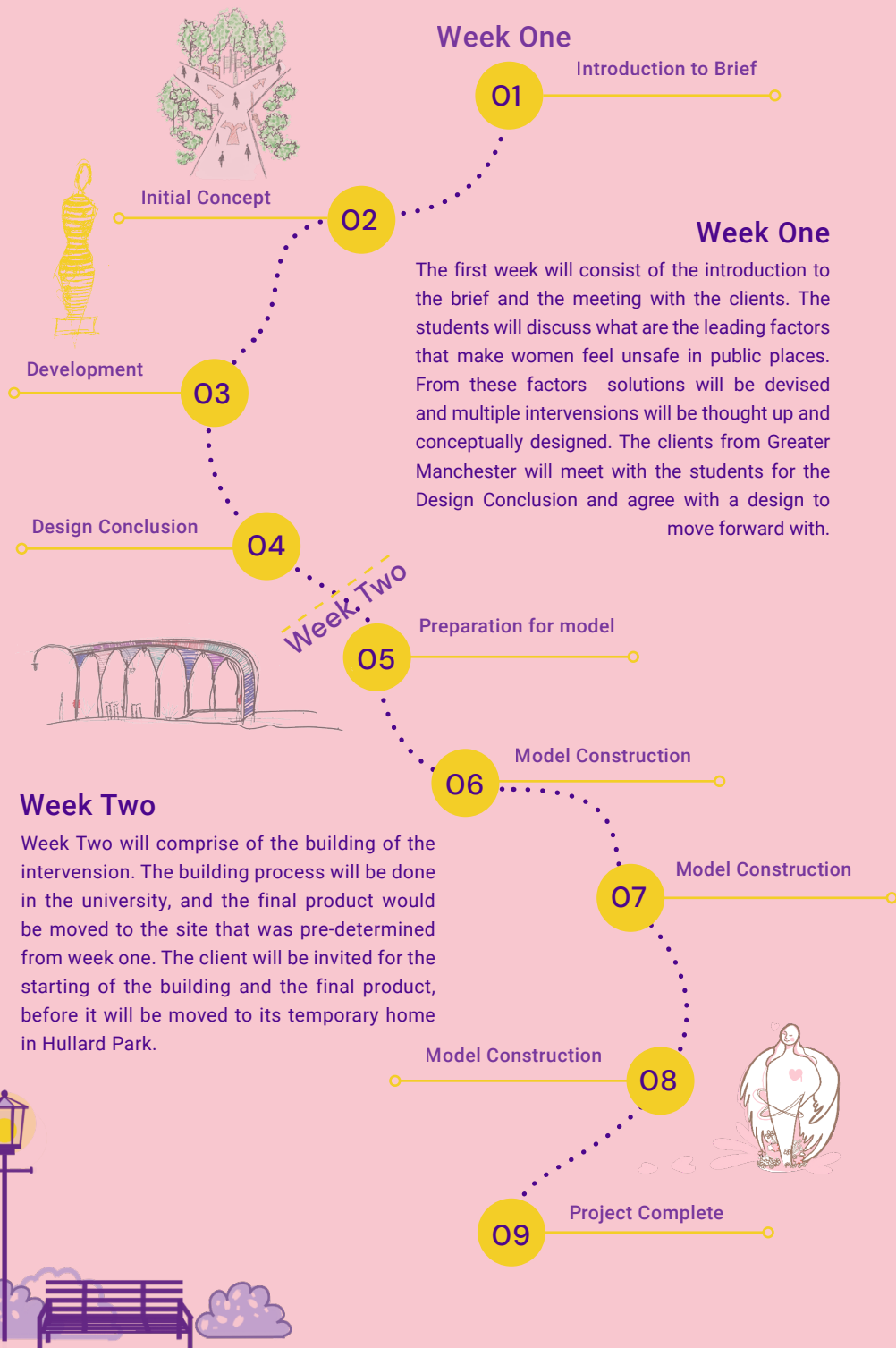
With the precedent of Trafford having an increase in violence and sexual harassment against women, Greater Sport Moving has decided to collaborate with MSA to design an architectural solution to counter this growing issue. Their goal is to create an installation or a public infrastructure that will stop these cases from happening as well as targeting its three main core values. 1. Have a space which activates sports and activity in the area 2. Make the space more inclusive to all types of women 3. Provide infrastructure that will make woman feel safe and comfortable in the space.

Through multiple discussion with the clients, we have chosen the area around Hullard Park in Trafford as the initial site. The site allowed us to identify certain problems women are currently facing in the area regarding walking alone and catalysed topics around safety of women in streets. By using Hullard Park as a starting point, we can then then propose our design in other areas in Trafford that are in need of empowering women to feel safe in the built environment. The output we agreed on with the client is to provide a moveable structure that can act as a device to make women feel safer alone in the street, whilst also providing support for them. The design should also be inclusive and should be able to interact with locals.

Our action week will begin by producing multiple ideas and solution tackling problems around safer streets for women. Following the discussions, the ideas will be presented into architectural designs, which will contribute to the methodology booklet. The methodology booklet will serve as an encyclopaedia for the client, so in the future when they want to implement further design solutions, they can refer to the book as a guide. Many of the design outputs in this guide tackle issues in relation to lighting and increasing high footfall to the site, to make it safer. Whilst others include promoting local artist on site, generating artwork in the public space to empower women in the area.

For week 2 we will begin constructing the proposed design which would be a silhouette of a women, that tackles the 5 senses. The model's intention is to make the space feel more welcoming for women, whilst acting as a guardian or support for passers-by. The foundation will also act as a soapbox for women to vocalise their thoughts and emotions when needed. The aim of this project is to produce an architectural solution tackling the issues discuss, which will act as a prototype for the client to use in the future.





Client

The main client for this project is the community of Trafford. There few project partners that involved in this project which consist of:-

Pubilca
Diva Creative
Trafford Council
Greater Sport
Mic Media
Open Data Manchester

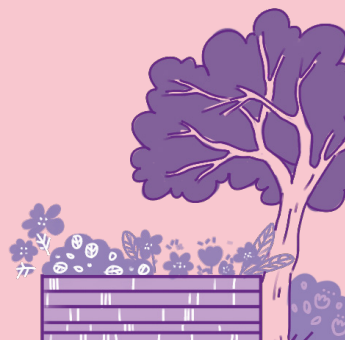
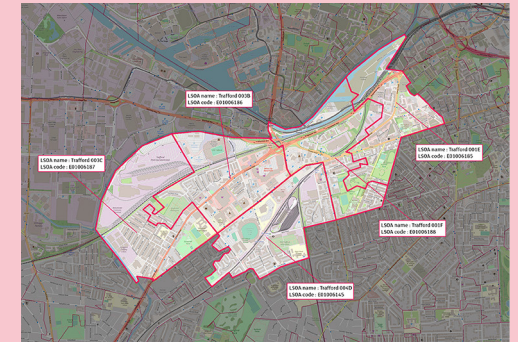
The community that will be the main focus of this project:

Community art groups
Local producer/ connector
Pedestrian walks & cycle rides
Leadership coaching
Bystander training

The first meeting with the client is on 10 May 2023. They explained about the site with their intentions on pursuing this project on how to make women and children feel safe at streets. Sharing ideas and design with students by sketching and research on precedent. After discussion with the client, the team had a clear overview of the project. During the first week, a conceptual response to this briefing was developed to prepare the presentation of the initial ideas to the customer the following week.

The client intentions is to:

Distract – cause a distraction/start a conversation
Delegate – get someone else involved
Document – photo, video, notes of what is happening
Direct – tell harasser to stop, ask if person targeted is ok
Delay – after the incident check the person targeted is ok



Site

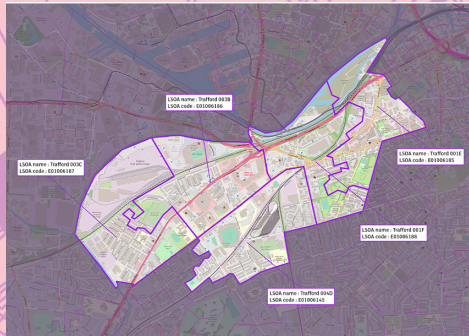
Old Trafford

Upon the first meeting with the client we understand that we have been tasked to create an intervention that would benefit the local communities as well as a few targeted 'vulnerable' groups in the area. Our intervention must seek to provide them with some form of safety and reassurance while they are in this area of Manchester. Alongside providing a safer space for women to be able to commute around the city, our client would like to put an emphasis on staying healthy and maintaining/encouraging fitness through sporting activities. This could be incorporated in the design intervention that we would implement in the Trafford area.

Hullard Park

The project takes place in Hullard Park, in Old Trafford. In the early hours of the day, the park are a serene and peaceful place to be. The calming environment of nature make for a perfect sociable space like morning walk or jog. However, as night falls, this same parks can become unsafe and dangerous. The lack of proper lighting in the park makes it easy for criminals to hide in the shadows and attack unsuspecting victims. The absence of security personnel further compounds this problem.

While the park seem like an idyllic place during daylight hours, they can quickly turn into a nightmare after dark. It is crucial that we take steps to make our public spaces safe for women and children to enjoy them. This can be achieved by proper analysis of the Hullard Park and creating an urban intervention as solutions for its existing social problems.



Initial Discussions

Upon our first group meeting we began to discuss ideas on what makes us feel unsafe and uncomfortable on site. From then on we began to relate to the community and women voices in Trafford, using the information collected previously by the client Greater Sport and the publication document on Right to the Streets by Publica. Upon identifying the problem the group began to discuss several architecture interventions that would tackle such problems.

WHEN SPACES BECOME TOO QUIET
LESS WOMEN WILL USE THIS SPACE
AS IT GIVES AN EERIE ATMOSPHERE. THE LACK OF NOISE MAKES PEOPLE FEEL WATCHED, AND EVERY SOUND MAKES PEOPLE MORE NERVOUS AT NIGHT.
COULD MUSIC BE PLAYED TO CALM PEOPLE OR SOUNDS PROVIDED TO WALKIN

DANGER!!

Unsafe Streets

ALOT OF AREAS HAVE DOUBLE IDENTITY. WHILST IN THE MORNING SPACES LIKE PARKS HAVE ALOT OF CHILDREN & DOG WALKERS DURING NIGHT TIME IT BECOMES VERY DARK AND ISOLATED. DISCOURAGING WOMEN TO TAKE SHORT ROUTES HOME.

Look of People

MANY AREAS IN TRAFFORD AT NIGHT ARE ISOLATED AND UNUSED, THE LACK OF FOOTFALL THEREFORE MAKES LESS FEMALE TRAVEL IN THESE SPACES AT NIGHT AS THEY MAY FEEL ALONE & UNSAFE. THEREFORE TO IMPROVE THIS, IS THERE A WAY TO

ACTIVATE STREETS

WALKING ALONE AT NIGHT MANY WOMEN TEND TO EXPERIENCE SEXUAL HARASSMENT AND VIOLENCE. THIS COULD BE BECAUSE OF THE LACK OF

SECURITY

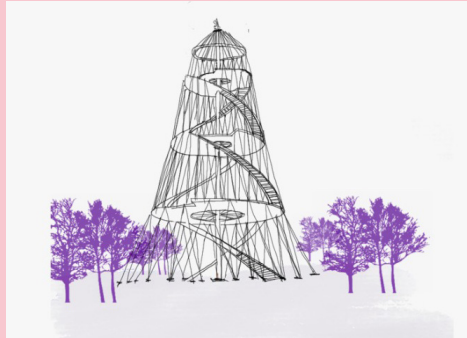
HOWEVER OTHER THAN CCTV IS THERE OTHER METHODS FOR SURVEILLANCE.



Initial Concepts

Look Out Tower

Designing a look out tower with a higher point for better visibility around the parks. This can also act as a passive security measures to reduce the chances of crimes and assault against women



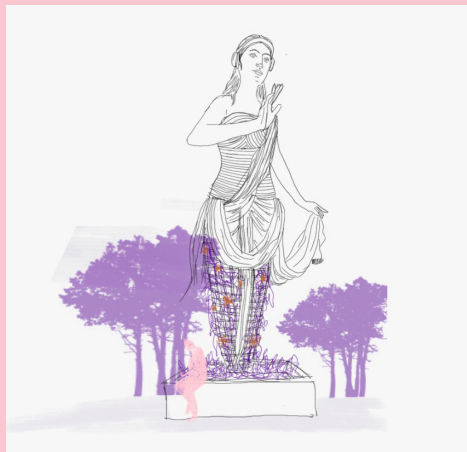
Pavilion and Nature

Combining nature and art to make parks more welcoming and inviting for users, simultaneously making increasing visibility and reducing chances of committing crimes.



Immersive Art Pavilions and Sculptures

Designing sculptures with subtle security measure as a form of security for women and girls in parks. The team combined the idea of a look-out tower and pavilion, we came out with the idea of a goddess looking out for the women. The goddess sculpture can be installed with cctv's and panic button when women feel in distressed, this will alert local enforcement. The main idea is putting art into the parks to invite more users as a passive security combining with active measures implemented into the art forms.

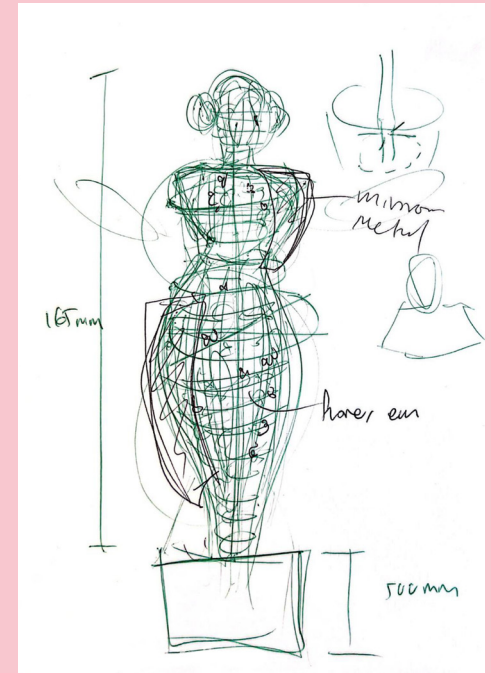


Client Responses

On the second day of our meeting was with the client from Greater Sport and also a few people from the community. A discussion made on the problem and solution of the site which affect the community the most. Some opinion and ideas from the client which involved in making a model. The client suggest on making a human sculpture that symbolize a goddess which protect all women and children in the community. The client also suggest the material use for the sculpture to be made by wire.

We suggest to the client on making methodology booklet on how we identify the problem and solution on making the street safer for women and children. The client review on the problem and solution that was suggested by us and help to improve it more.

We went to a group community meeting at Gorse Hill as to get more information from them regarding the issues. A discussion was made with them in term of political aspect as the representative from the council is present. They also give some suggestion on how to overcome this matter. We presented the ideas and design to the client and they were pleased with all the progressed will proceed to model making.



Proposal

Precedent Study: The Knife Angel

"The sculpture, made from over 100,000 seized blades, was specifically created to highlight the negative effects of violent behaviour whilst solidifying our critical need for social change".
(British Ironwork Centre).



How the knife angel informed our design:

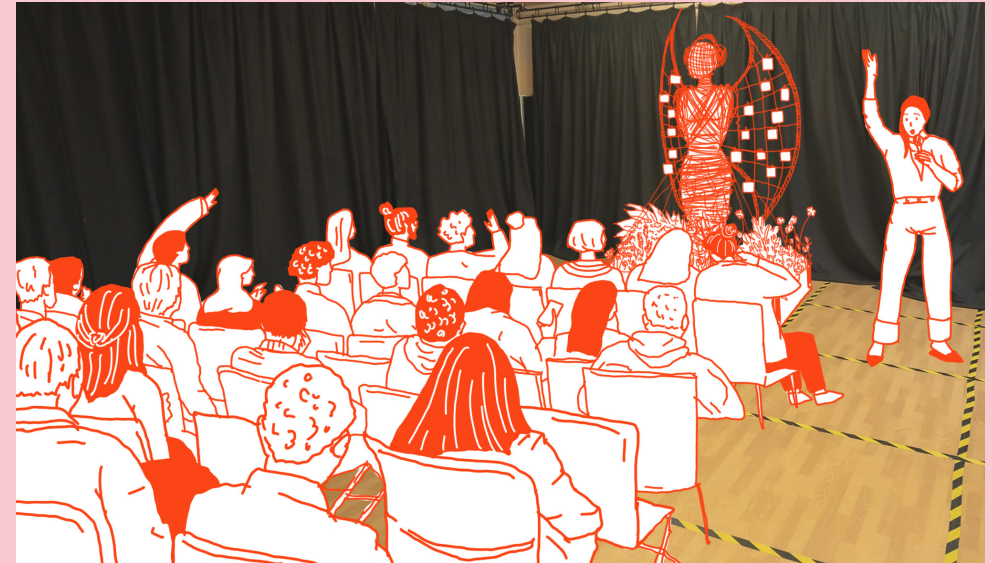
- Demonstrates the power of public art and how awareness can be raised about difficult topics such as violence in the community.
- Using art to engage youth and to create a dialogue within communities, encouraging people to speak up about their trauma.
- Creating a sculptural piece that can be used as a catalyst for change, empowering the community to address issues of safety and violence in their communities. and the success of this installation shows the massive potential combining artistic expression, community engagement and education can have to inspire positive social change and create safer environments.

Our Proposal: Goddess Hygieia

Our proposal is to create a platform, inspired by the traditional 19th century soapbox which allows the community to share their experiences and adversity that they have faced through the power of expressive therapy. This installation is an alternative to the saturated online world of which we often use to voice our issues. This solution is to ignite the communities rising, encouraging expression, engagement and a sense of unity and empowerment. The platform is brought to life through the Hygieia goddess sculpture which represents the communal trauma that exists in the community and how they can wear their trauma as their armour, rather than locking it internally and letting it manifest inside of them. The sculpture is to be reflected to allow everyone to see themselves in her, whilst the wings will represent the freedom the community can access through processing their past and freeing themselves from the shackles of their trauma. The sculpture is a reminder to the community of their strength offering a source of inspiration and protection.



Proposal Visuals



Model being used as a platform to speak on in Gorse Hill Studios, Trafford.

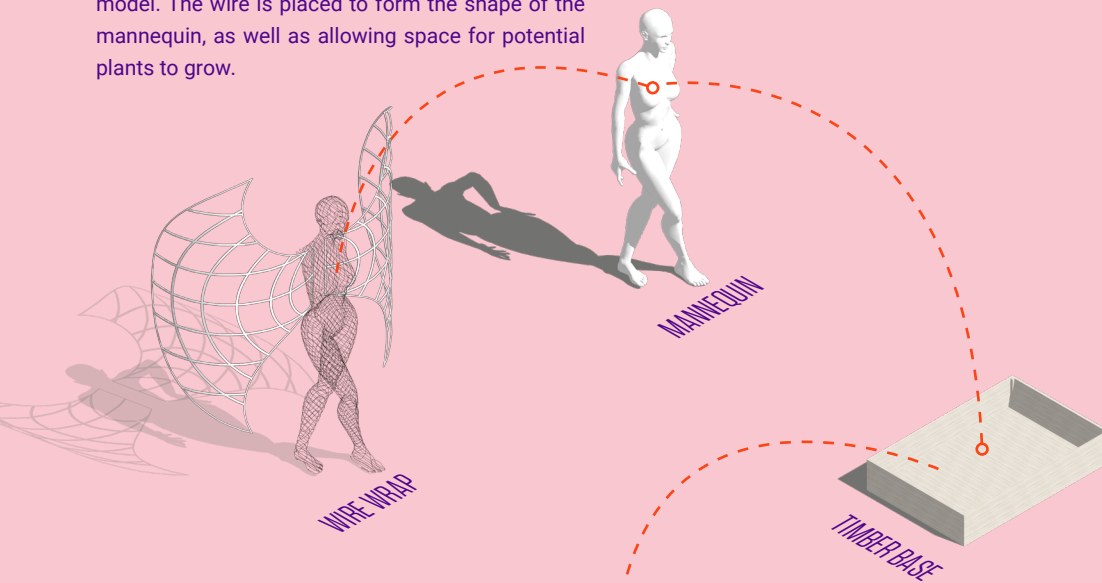


Models replicated and used as light installations across Trafford, image shows Hullard Park.

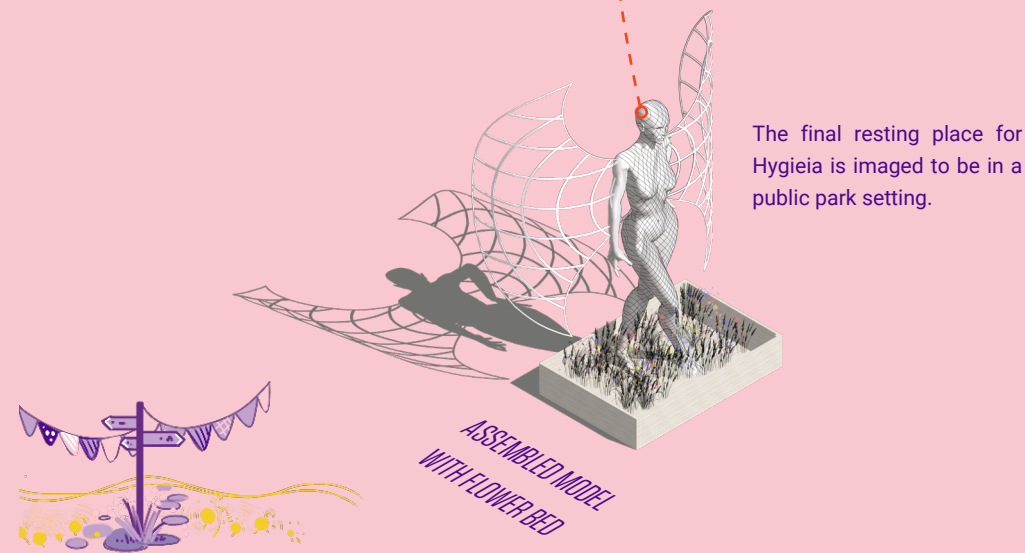


Materiality

The wire lines are wrapped around a mannequin model. The wire is placed to form the shape of the mannequin, as well as allowing space for potential plants to grow.

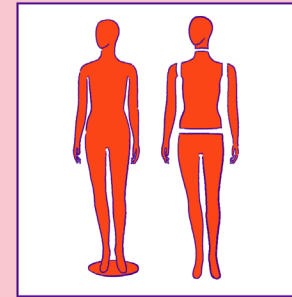


The final wrapped model is fixed to the timber base and filled with soil and plants. Over time the plants will grow through the model's wire and create an organic figure of Hygieia.

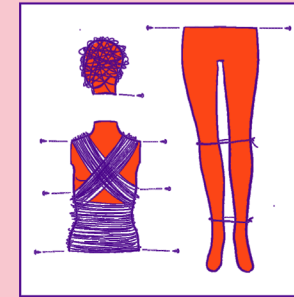


The final resting place for Hygieia is imagined to be in a public park setting.

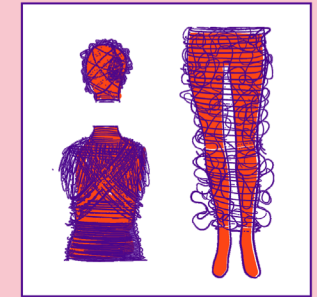
Construction



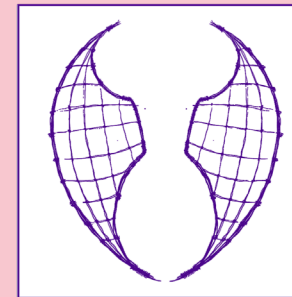
1. Detached a 170cm female mannequin.



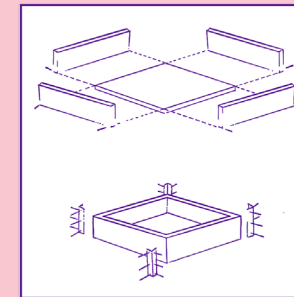
2. Wrap one layer of 5mm wire in each part of the body and secure with screw.



3. Add more layer of wire in every part of the body. Add more details to each part.



4. Build the wing's skeletons from the 5mm x 10 wire. Create the inner part from 5mm x 2 wire.



5. Build a 740mm x 580mm x 270mm base. Secure with metal right angle bracket for joint. secure with screw.



6. Assemble the statue inside the base. Fill soil in the base and secure the statue. Plant flower and ivy. Hang notes from community. more details to each part.



Setting a Precedent for the Council

The aim of the project is to set a precedent for future implementations to tackle safer streets. Whilst the model activates inclusiveness by acting as a platform to express concerns, and helps empowers women, acting as a guard, this model can also tackle other issues discussed previously, such as darkness, sound, and surveillance.



Previous discussion on what makes us feel unsafe is the sense of smell, therefore in the future, flowers that calms people such as lavender or tea tree oils can be planted or diffused within the structure.



Whilst day time the sculpture functions as the proposed, fairy lights or solar lights can be places inside acting as a torch at night, this can be placed in parks, to increase footfall.



Research suggests tactical tools often helps calm anxiety, therefore on the structure silk or other soft fabrics could be added on to calm people when in need of support, or even textured surfaces can be clipped on the wired frame.



The iteration presents a reimagined use of the model incorporating sound. Speakers are embedded into the structure and can be used to connect the community through spreading poetry, stories or music.

Event Day

For the final day, we held an event for the clients, in which our model will be displayed on site and in the community art space Gorse Hill Studio in Trafford. The day allowed the clients to see how the community interacted with the structure and was able to demonstrate how a simple structure can provide support for females in the community.



By presenting the model in the outdoors, allowed us to explain how the structure can tackle the double identities of different spaces in Trafford, and how a structure that engages with people and intertwines with various sense can hopefully activate a livelier street, in which will create a safer space for girls and women in Trafford.



ABOUT

Each year the MSA LIVE programme unites Masters Architecture year 1 students with those in BA year 1 and year 2 and Masters Landscape Architecture 1 in mixed-year teams to undertake live projects with external partners to create social impact.

LIVE PROJECTS

All MSA LIVE projects are live. A live project is where an educational organisation and an external partner develop a brief, timescale, and outcome for their mutual benefit.

SOCIAL IMPACT

All MSA LIVE projects have social impact. Social impact is the effect an organization's actions have on the well-being of a community. Our agendas are set by our external collaborators.

EXTERNAL PARTNERS

MSA LIVE projects work with many organisations: charities, community groups, social enterprises, community interest companies, researchers, practitioners and educators.

STUDENT-LED

Our MSA masters students take the lead in the project conception, brief development, delivery and co-ordination of a small project. Other cohorts joined for an eventful 2 weeks of activities at the end of the academic year.

KNOWLEDGE TRANSFER

Working in teams within and across year groups and courses; MSA students participate in peer to peer learning. In addition, collaborators, participants and students engage in the transfer of tangible and intellectual property, expertise, learning and skills.

LARGE SCALE

This year approximately 650 students from 4 cohorts in MSA have worked on 42 projects with partners.

QUESTIONS

For questions about MSA LIVE please contact the MSA LIVE team:

msalive@mmu.ac.uk

BLOG

live.msa.ac.uk/2023

SOCIAL

#MSALive23

@msa.live.23

@TheMSArch

@MLA_TheMSArch

WEBSITE

www.msa.ac.uk