

MANCHESTER SCHOOL OF ARCHITECTURE

PICTURE THIS

AGENDA

Our project will focus on the benefits of **well-designed public space** and how it can be physically applied to Chorlton High Street. Within the action weeks we will design a public space outside the former picture house to compliment redevelopment plans and **promote social interaction** through immersing community into a space for rest, play, conversation, and events.

COLLABORATOR

Chorlton Community Land Trust
(Chorlton CLT)

TEAM

Aye Eindra Lin
Xin (Silvia) Shu
Yow Hue Tan
Siddhart Bijayendra Tiwari
Keating Walters



Visit msa.ac.uk for more information



MSA
LIVE 23

Team

Aye Eindra Lin (MArch1)

Keating Walters (MArch1)

Xin Shu (MArch1)

Yow Hue Tan (MArch1)

Siddharth Tiwari (MArch1)

Nia Peters (BA1)

Grace Walker (BA1)

Xinyi Li (BA1)

Tamzin Young (BA1)

Wenyao Luo (BA1)

Alice Barnes (BA2)

Ivan Stanchev (BA2)

Joyce Fang (BA2)

Sarah Catherall (BA2)

Junying Wang (MLA1)

Partners

We had the pleasure of having Steve Goslyn of Chorlton Community Land Trust (CCLT) as our collaborator, who alongside Catherine Brownhill from Chorlton Vision, to provide invaluable insight into Chorlton and the aspirations for the area.

CCLT are a group of local residents that dedicate their talents towards regenerating Chorlton from a community, and environmental level, celebrating their local identity. As part of the community land trust agenda, CCLT are not-for-private-profit, so in turn the surplus goes towards benefitting the community.

The aims and agenda of the CCLT pertain to allowing local residents to have full control of the design and development of their homes and public spaces. This MSA LIVE project aims to work in tandem with such agendas and work collaboratively with CCLT.

Agenda

Picture This

Our site is Chorlton - the largest district centre in Manchester with pedestrian and retail activity restricted to two intersecting busy main roads. We will work with Chorlton Community Land Trust and Chorlton Vision. Our project will focus on the benefits of well-designed public space and how it can be physically applied to Chorlton High Street. Within the action weeks we will design a public space outside the former picture house to complement redevelopment plans and promote social interaction through immersing community into a space for rest, play, conversation, and events.

Social Impact

The envisagement of "a public square" in Chorlton can have many social impacts:

- Increasing people's wellbeing through having attractive, well designed, spaces with calming green areas included.
- Reducing loneliness by creating opportunities for people to meet and socialise.
- Encouraging the use of local shops and facilities thus benefiting the local economy and enhancing job opportunities.
- Reducing car use where people can see the benefit of walking or cycling to and in turn reducing air pollution and congestion within an urban centre.
- Improving community safety through the design of areas to provide increased natural surveillance.
- Increasing a sense of pride of place in Chorlton, thus increasing people's likelihood of volunteering and contributing to community resilience.

The Site

Our site is Chorlton - the largest district centre in Manchester with pedestrian and retail activity restricted to two intersecting busy main roads. On the second day of the action week, we visited Chorlton, and had a meeting with our collaborator Steve to understand their vision for the project. We were made aware of the issues and concerns regarding the site and its location.

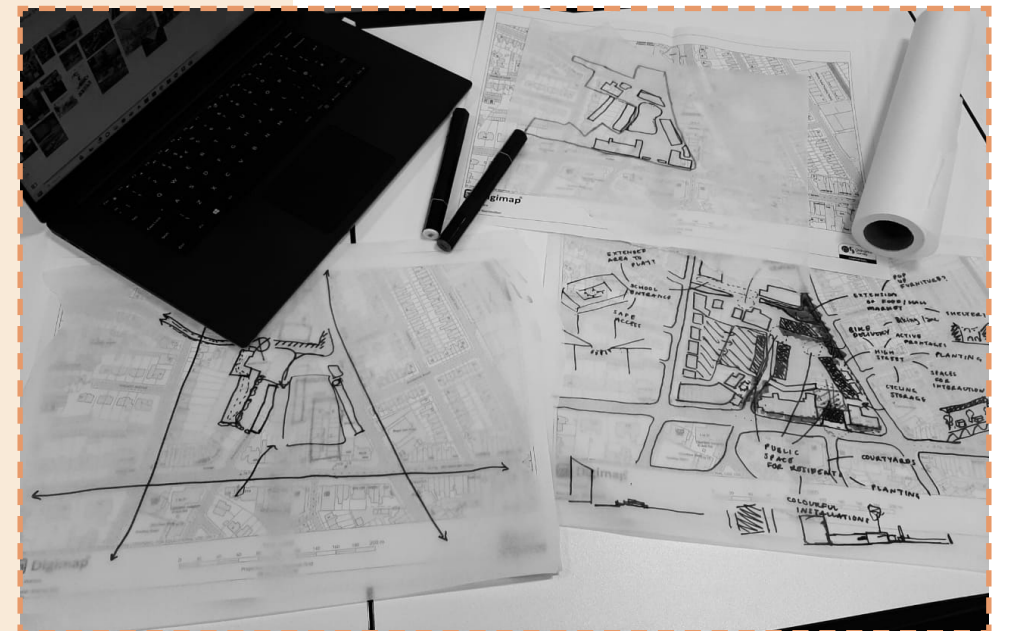
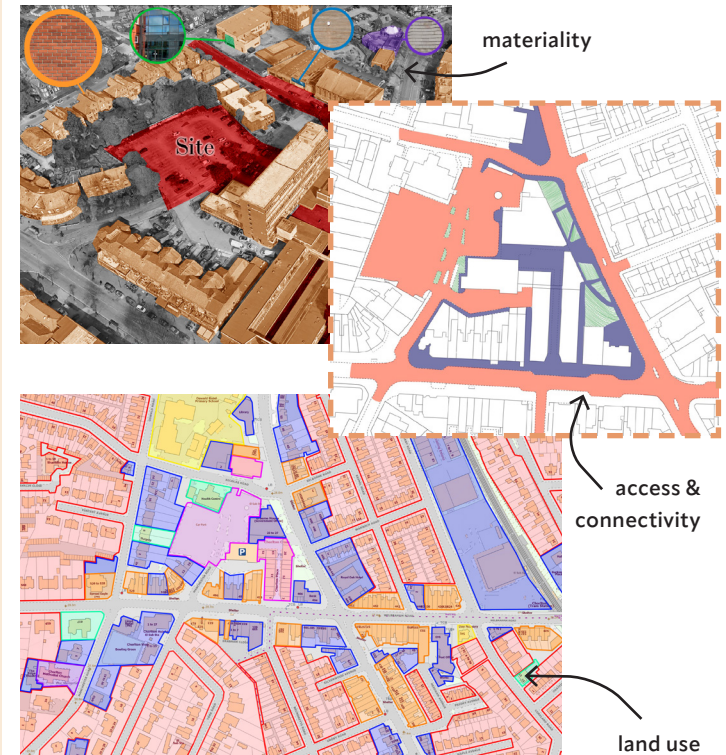


Site Visit



Site Analysis

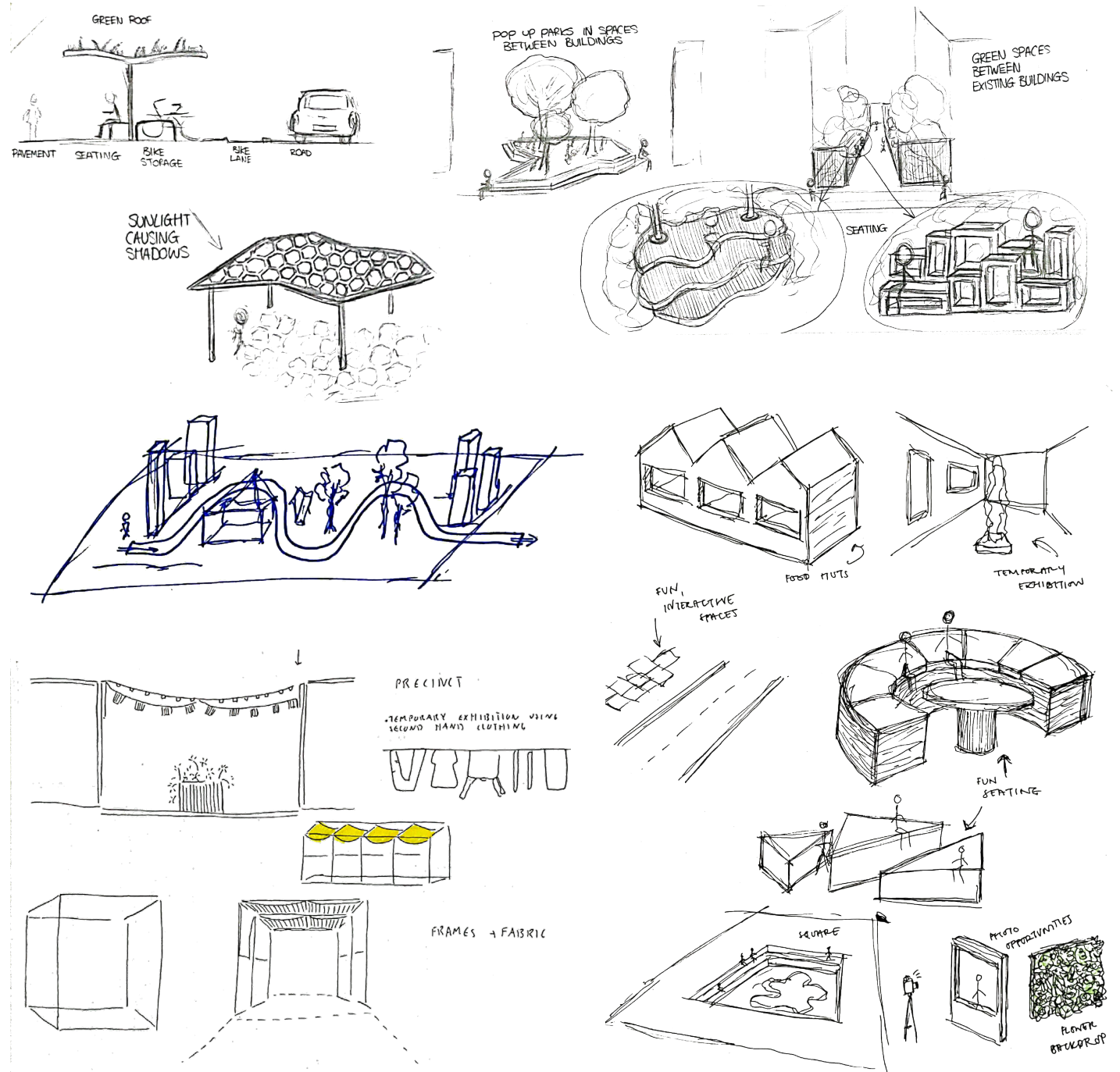
The site analysis day consisted of desk based and physical research of the site, and collated information, analysis and precedents on a miro board to discuss as a group, and begin thinking about the area from a multitude of lenses. The visit itself was invaluable to understand key issues of the current condition, including not enough place to meet and sit, as well as being very congested with traffic.



Concept Development

Icebreaking Activities

Students were asked to create concept models and sketches initially to start thinking about what public space means to them. These initial designs, once supported by the site research and analysis, were able to be developed within the specific contexts.



Masterplan

Key Strategies

1. NICHOLAS ROAD

The aim of this intervention is to reduce congestion along the street, which will in turn create places for residents and visitors to rest or play. This will be ideal for the environment surrounding the health centre and school.

2. THE PICTURE HOUSE

Following future plans to create a food market within the old Picture House, our intervention aims to extend the spaces to the newly pedestrianised street to include places to eat, drink and host pop up events.

3. 'CHORLTON SQUARE'

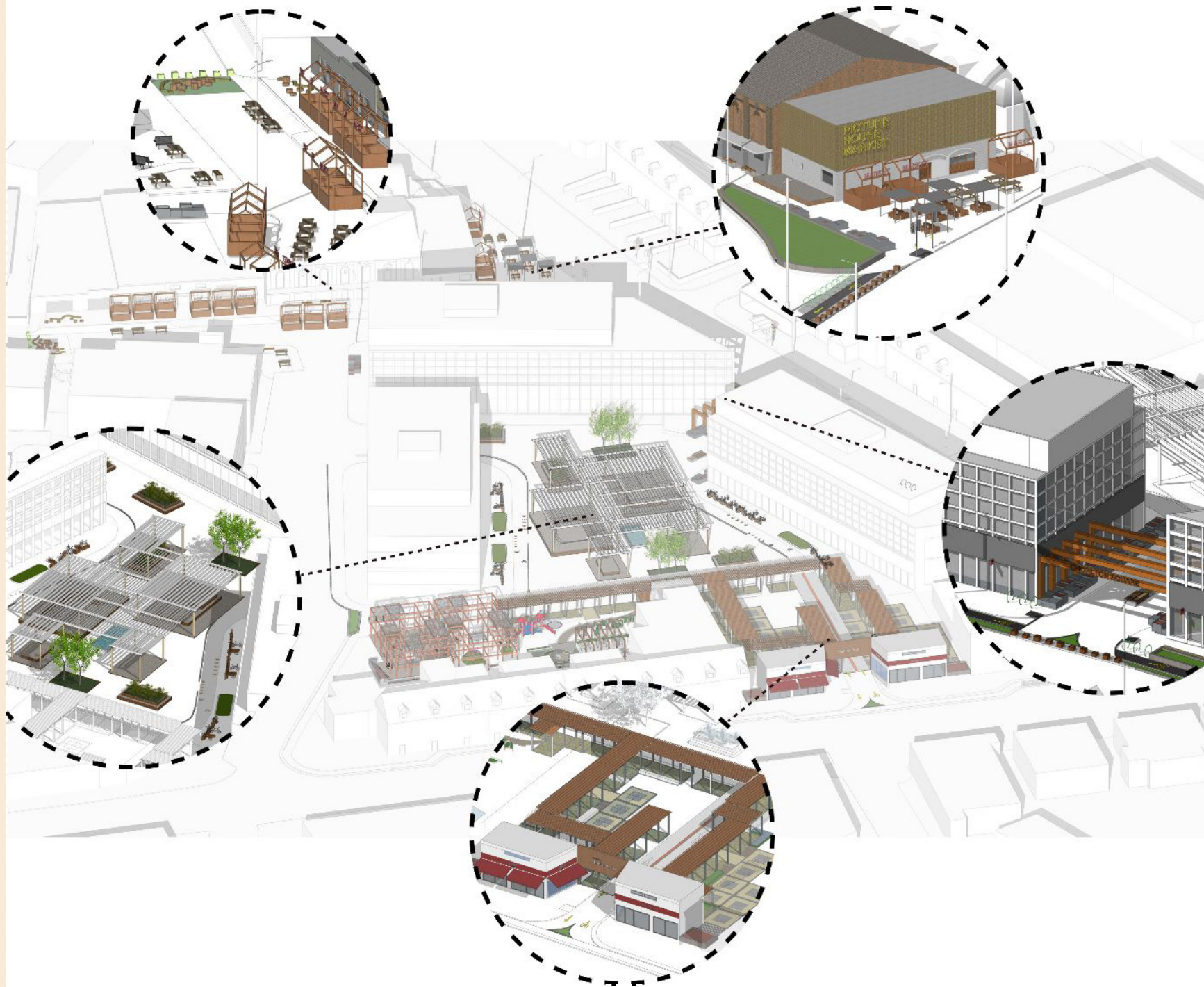
The aim of this intervention is to provide an extension of the cycle network as well as providing a new central hub for the bike deliveries. This will also create a public green space within walking distance from a range of amenities.

4. ACTIVE HIGH STREETS

This intervention aims to work with the existing plans of creating cycle lanes along Barlow Moor Road, and aims to accommodate cycling storage, planting as well as colourful shop windows.

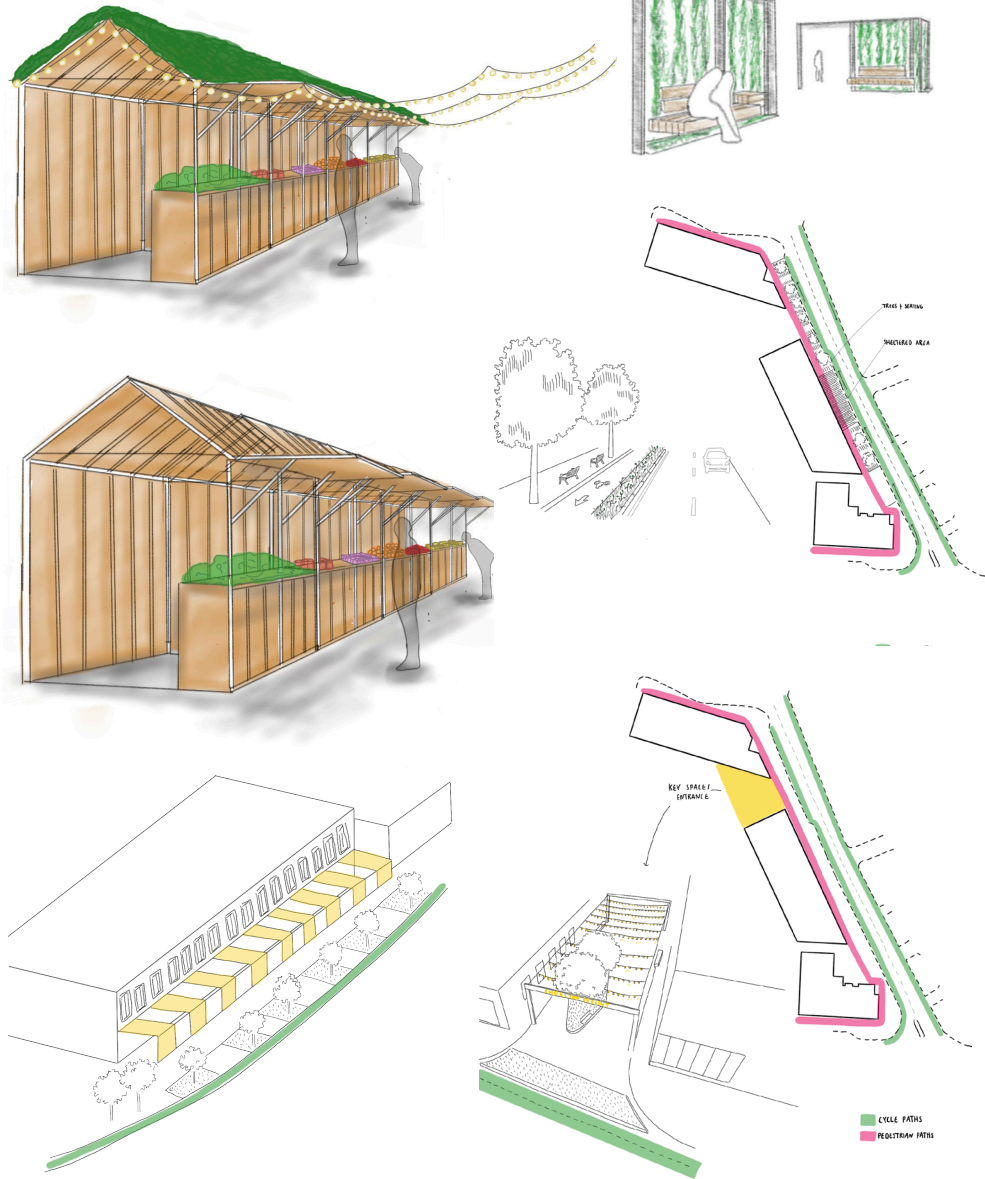
5. THE GATEWAY

The idea behind the gateway interventions is to create an entrance to the public square that is welcoming and an active part of the high street.

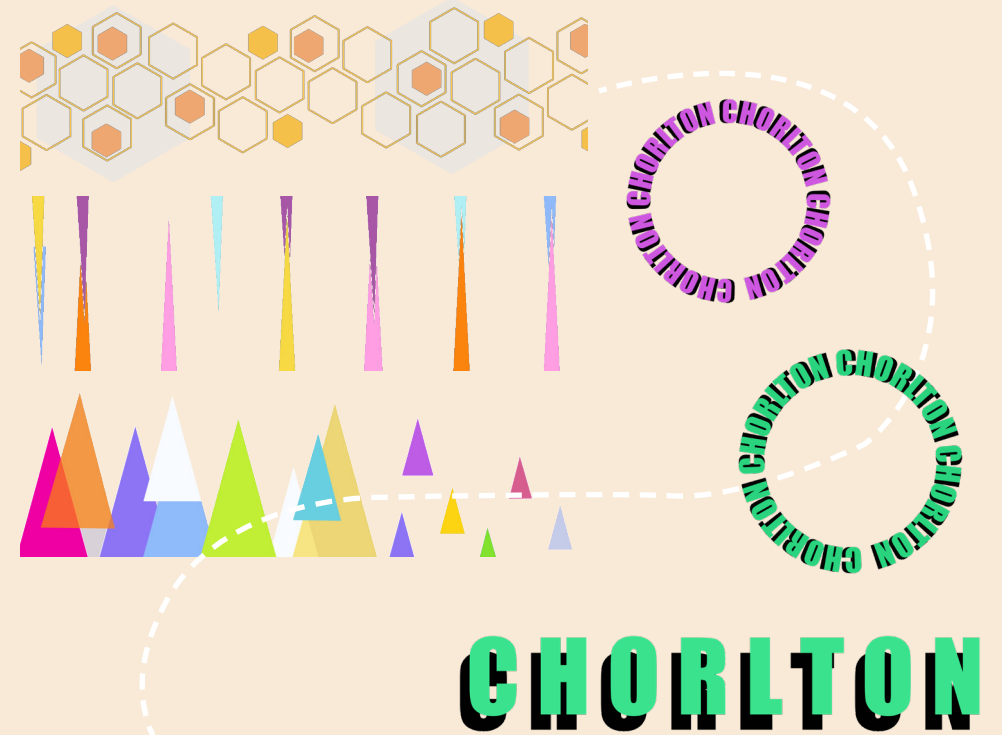


Design interventions

Furniture & Strategy



Shop Front Design



3D visualisations



3D visualisations



Student Engagement



During the creation of these final visualisations, the MArch students hosted a range of skills workshops, to introduce new softwares such as Lumion, and additional skills within photoshop that aid post-rendering. Each student was then given a rendered image to add to in the style of their choice.



ABOUT

Each year the MSA LIVE programme unites Masters Architecture year 1 students with those in BA year 1 and year 2 and Masters Landscape Architecture 1 in mixed-year teams to undertake live projects with external partners to create social impact.

LIVE PROJECTS

All MSA LIVE projects are live. A live project is where an educational organisation and an external partner develop a brief, timescale, and outcome for their mutual benefit.

SOCIAL IMPACT

All MSA LIVE projects have social impact. Social impact is the effect an organization's actions have on the well-being of a community. Our agendas are set by our external collaborators.

EXTERNAL PARTNERS

MSA LIVE projects work with many organisations: charities, community groups, social enterprises, community interest companies, researchers, practitioners and educators.

STUDENT-LED

Our MSA masters students take the lead in the project conception, brief development, delivery and co-ordination of a small project. Other cohorts joined for an eventful 2 weeks of activities at the end of the academic year.

KNOWLEDGE TRANSFER

Working in teams within and across year groups and courses; MSA students participate in peer to peer learning. In addition, collaborators, participants and students engage in the transfer of tangible and intellectual property, expertise, learning and skills.

LARGE SCALE

This year approximately 650 students from 4 cohorts in MSA have worked on 42 projects with partners.

QUESTIONS

For questions about MSA LIVE please contact the MSA LIVE team:
msalive@mmu.ac.uk

BLOG

live.msa.ac.uk/2023

SOCIAL

#MSALive23
@msa.live.23
@TheMSArch
@MLA_TheMSArch

WEBSITE

www.msa.ac.uk