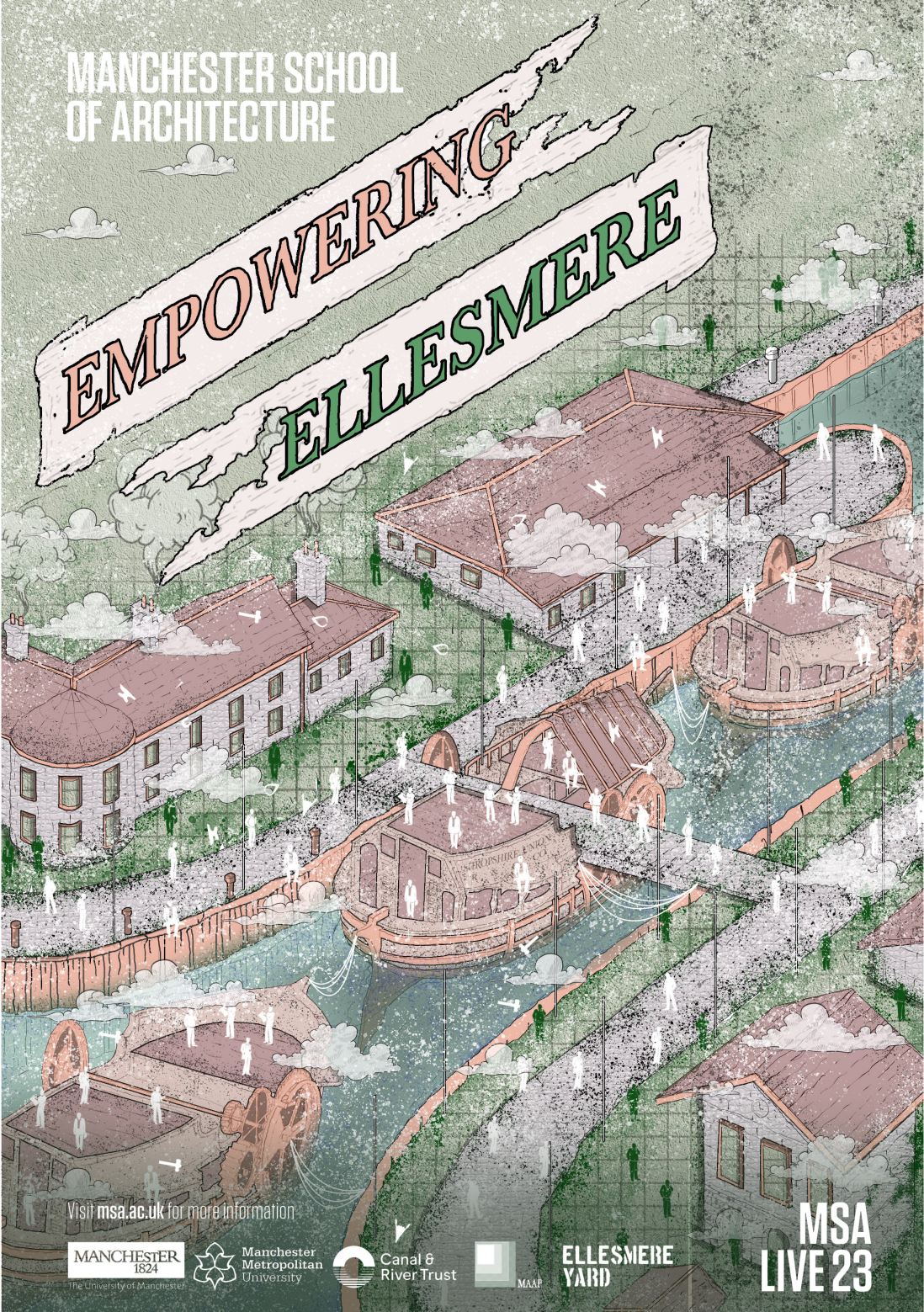


MANCHESTER SCHOOL
OF ARCHITECTURE

EMPOWERING ELLESMERE



Visit msa.ac.uk for more information



ELLESMERE
YARD

MSA
LIVE 23

Team

Jerusha Miriam Oommen (MA AR)
César Eduardo Vicencio Vega (MA AR)
Izzat Hakimi Bin Abd Ghani (MArch1)
Ammar Hakim Bin Rosdi (MArch1)
Muhammad Najib Bin Rossaidi (MArch1)
Muhammad Haziq Bin Rosle (MArch1)

Hongyi Sun (BA1)
Daniel Curran (BA1)
Verity Chapman Gibbs (BA1)
Yasmine Dutt (BA1)
Dolis Imrani (BA1)
Olga Vlasova (BA2)
Sion Lewis (BA2)
Benjamin Bello-Mendoza (BA2)

Media & Arts Partnership (MAAP)

MAAP is a creative regeneration practice led by Sue Ball, a cultural producer who specializes in social and spatial design. The organization focuses on supporting fair and democratic urban development by helping people develop the skills and knowledge needed to effect social and physical change. By bridging gaps between different sectors and disciplines, MAAP aims to create new learning opportunities and interdisciplinary design approaches for urban spaces.

Commissioned by Canal and Rivers Trust's property team since 2010, MAAP has assigned Ruth Essex to be our point of contact. Ruth Essex from Media & Arts Partnership collaborated on MSA Live 23's "Project Empowering Ellesmere" have participated in discussions on the project's vision and goals, design and implementation, community engagement, and funding and resources. As a cultural producer with expertise in social and spatial design, Ruth contributed to exploring different design ideas and identifying potential challenges. She also played a critical role in engaging with the community and incorporating feedback to ensure the project reflected their needs and desires. Additionally, Ruth recommended implementing a circular economy approach to reduce embodied and operational carbon by reusing and repurposing local materials.



Agenda

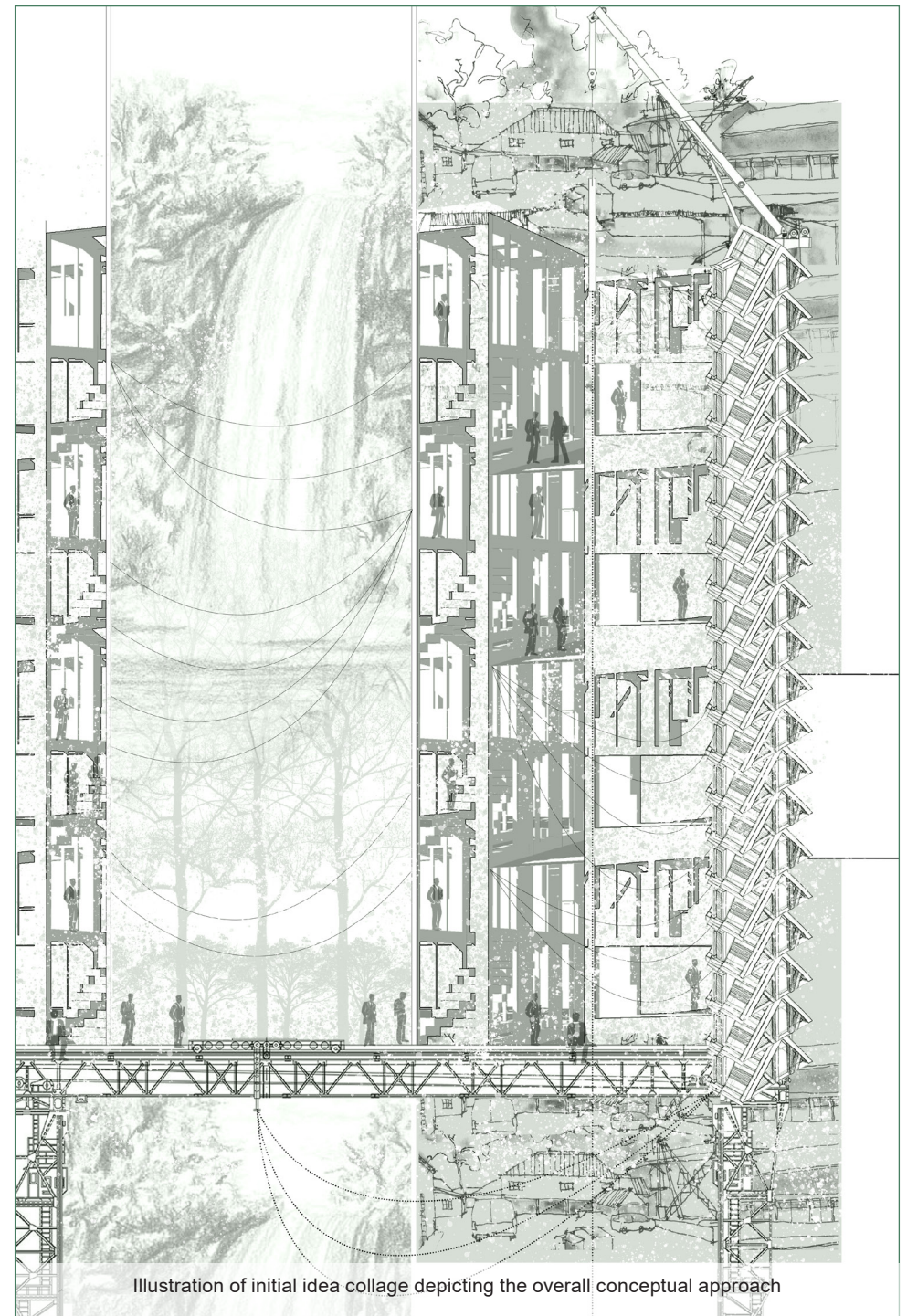
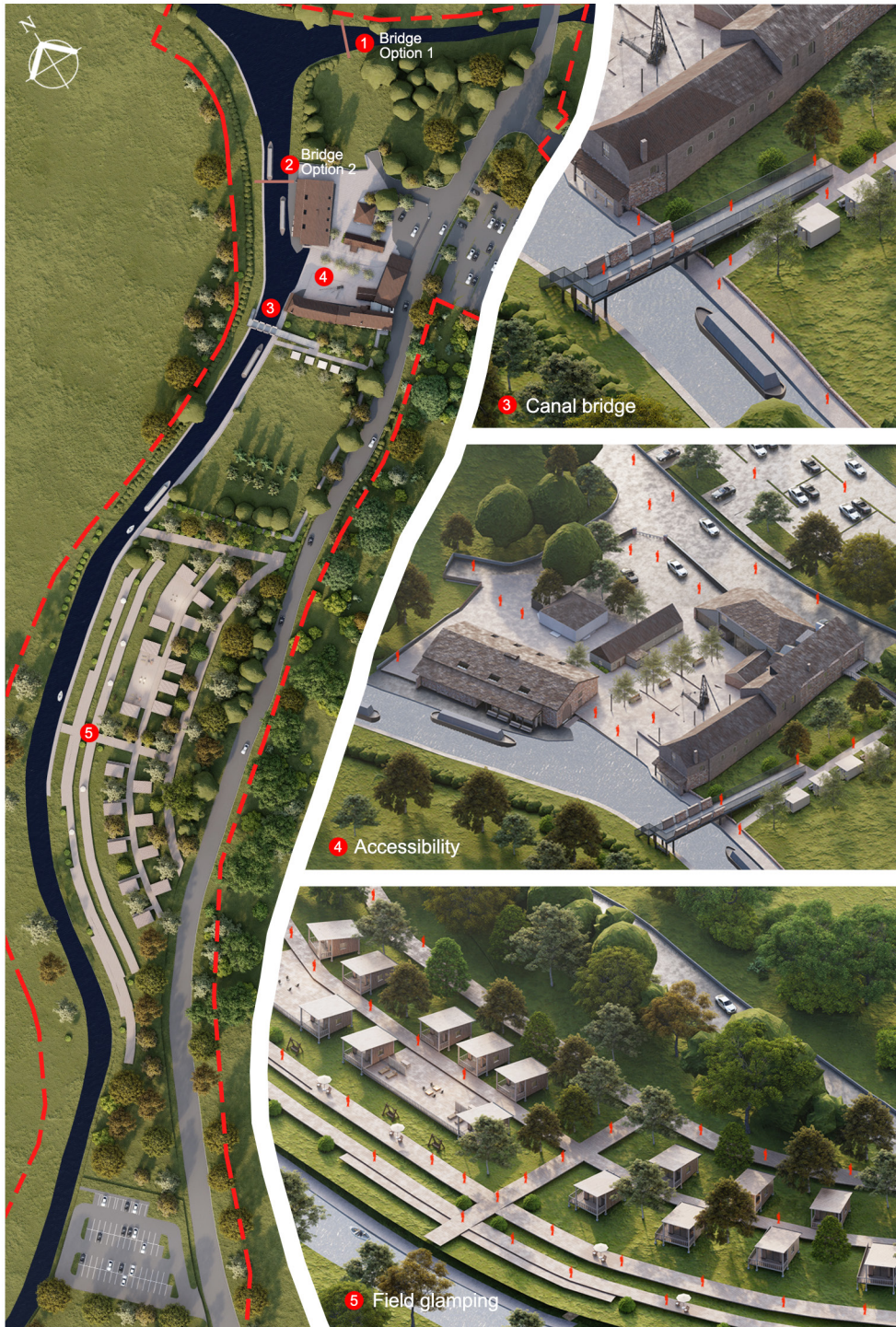
Empowering Ellesmere

We are MSA Group 08 and we will be collaborating with the Canal Trust and MAAP Studios to intervene in the design of the Ellesmere Yard, located in Shropshire, England. The project aims to strengthen the connection between the land, the water and the individual on a macro level - in connection with Ellesmere Town as well as on a micro level - catering to the existing heritage of the site, thereby empowering Ellesmere. The design will revolve around slow architecture, accessibility, connectivity, maintaining a circular economy and enhancing the ecology through landscape architecture.

Slow architecture is an approach that emphasizes quality over speed, and prioritizes the use of sustainable and environmentally friendly materials. In the context of this project, slow architecture will be used to encourage a deeper appreciation of the landscape and the natural environment. This approach will also help to preserve the heritage and ecology of the site, while making it more accessible to people.

Another important aspect of the project is accessibility. The project team recognizes the importance of making the site accessible to everyone, regardless of their abilities. To achieve this, the project will involve careful planning and design to ensure that all users can access the site easily and safely. The project team will also work with local businesses to help them become involved in the project. This will help to strengthen the local economy and ensure that the benefits of the project are felt throughout the community.

Sustainability is another key consideration for the project. The team recognizes that it is important to develop a sustainable approach to the project, both in terms of the materials used and the ongoing maintenance of the site. To achieve this, the project will use sustainable materials where possible and will explore the use of renewable energy sources to power the site. Finally, the project team is committed to preserving the heritage and ecology of the site. This will involve careful planning and design to ensure that any changes made to the site are done in a way that respects its history and natural environment.



Accessibility

Access into Ellesmere Yard

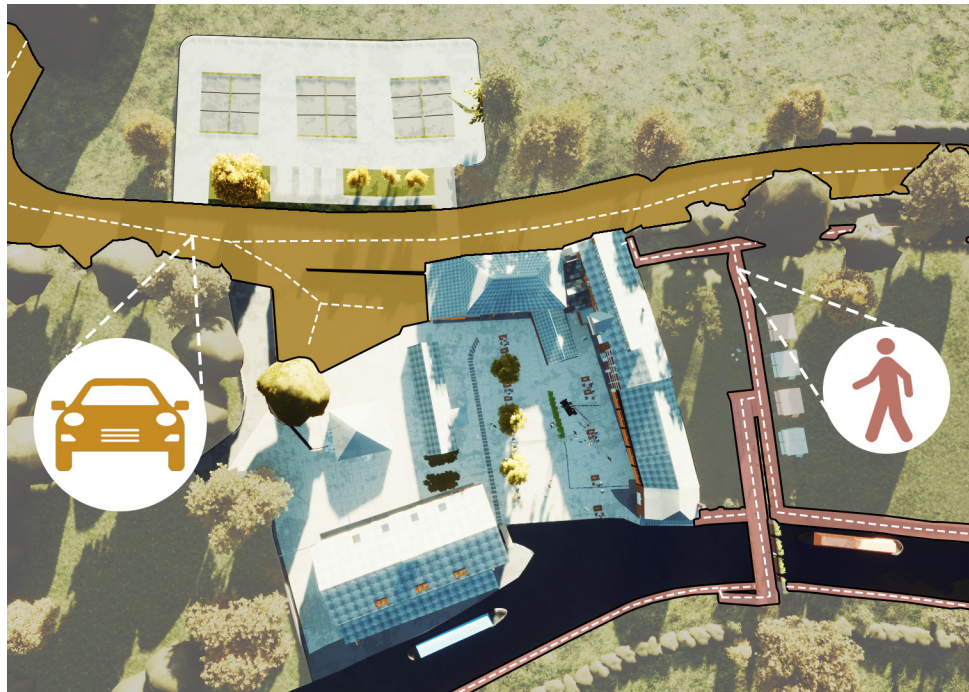
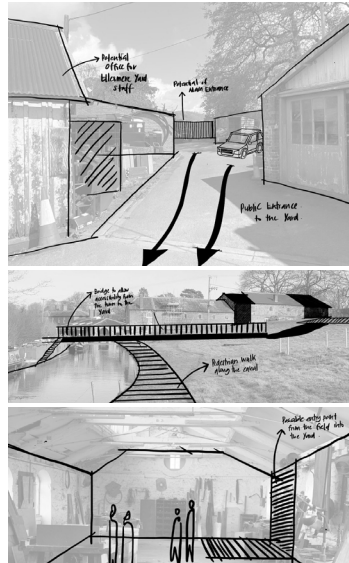
1. Vehicle

The new main accessibility of visitors for vehicle is located at the front area of the Ellesmere Yard as currently that area is not being used and act as a garage and storage. The design also has take into consideration of public and private circulation since the current situation is Ellesmere yard only has one entrance that can be used for visitors and also staff.

2. Pedestrian Walk

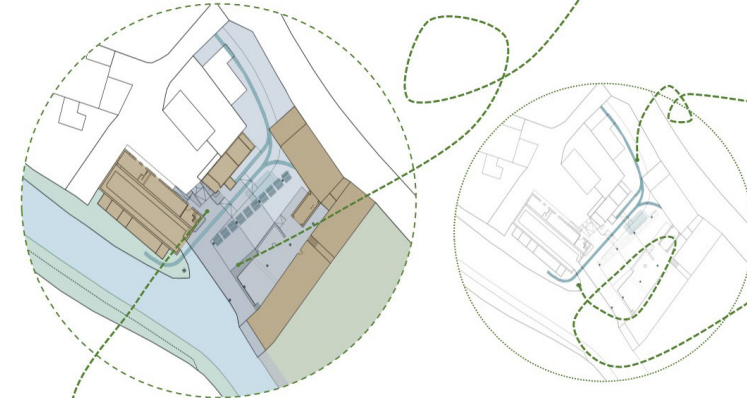
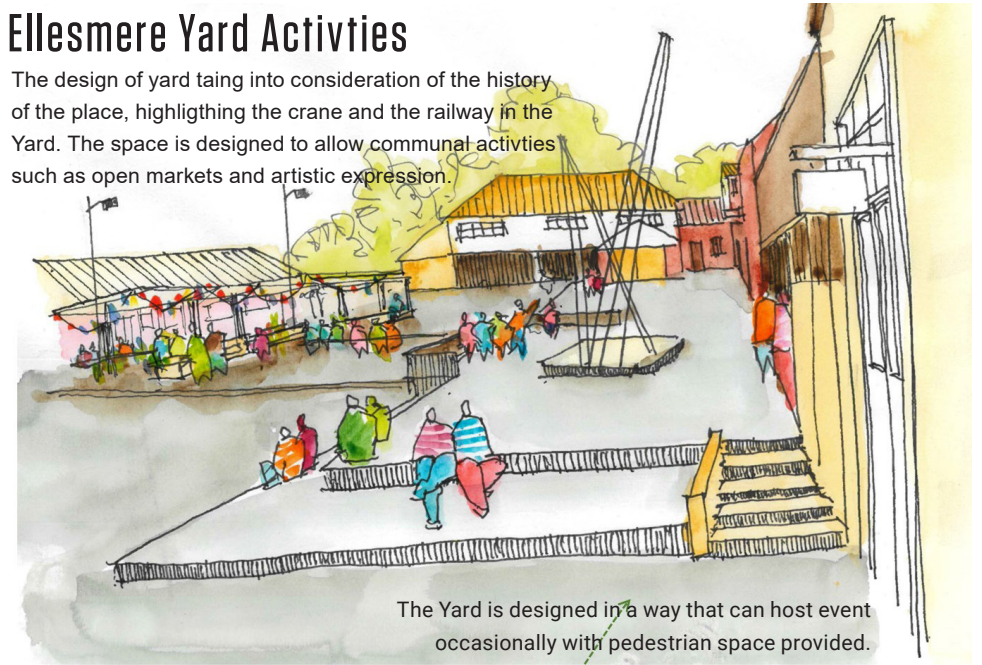
Pedestrian walk accessibility into the Ellesmere Yard has been redesigned that allow visitors from the town and also the field to have access to come into the yard. The accessibility connections are through the new bridge design and the walkway at the field coming in to the Ellesmere Yard.

Process

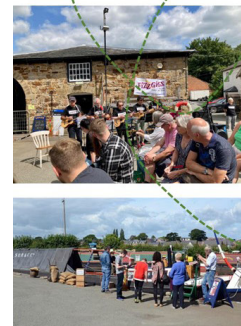


Ellesmere Yard Activities

The design of yard taking into consideration of the history of the place, highlighting the crane and the railway in the Yard. The space is designed to allow communal activities such as open markets and artistic expression.



Highlight heritage Yard 1900



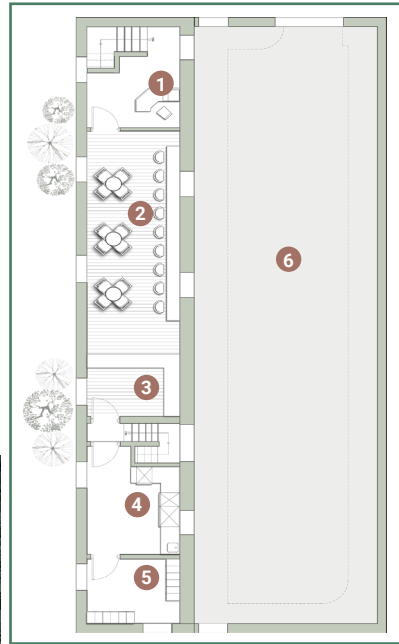
Community Activities Indoor Connected & Event Space



Cafe & Office Design

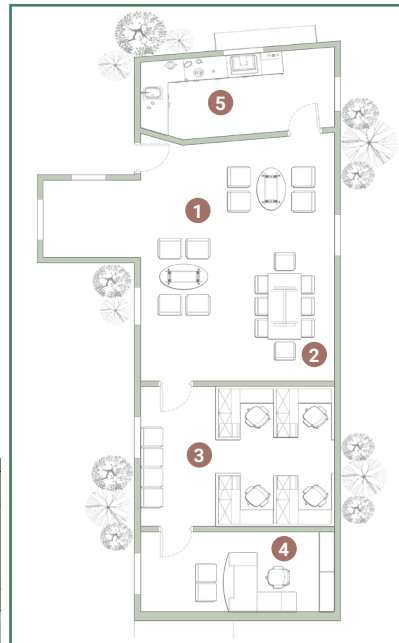
Cafe Design

The new cafe is located at the current office area, utilising the view towards the dry dock . The intention is to allow visitors to see the activity that happens in the dry dock area through the existing large windows in the building while having their time. This cafe seeks to promote economic to the Ellesmere by providing services and promoting to the visitors.



Office Design

The new office layout is located at the current store in Ellesmere Yard. The building is link to the Yard directly. Maintaining the existing structure and elements of the building, but redesigning the interior for the new office area for Ellesmere Yard staffs. There is also a historical weighing in the office area that can be taken care of the staff in Ellesmere Yard.

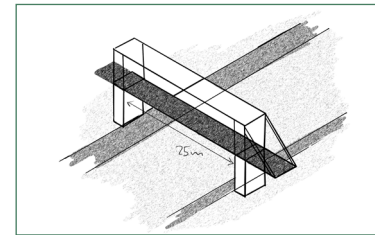


LEGEND

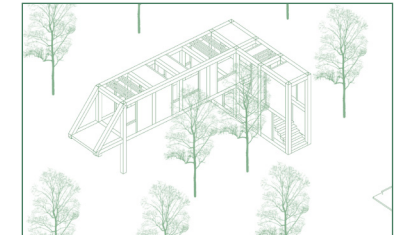
Cafe Layout :
 1. Reception
 2. Seating area
 3. Food Counter
 4. Kitchen
 5. Storage
 6. Dry Dock

Office Layout :
 1. Waiting Area
 2. Discussion Area
 3. Staff Office
 4. Manager Room
 5. Pantry

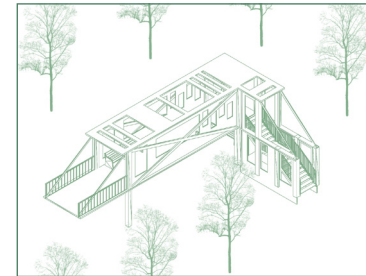
Canal Bridge Design



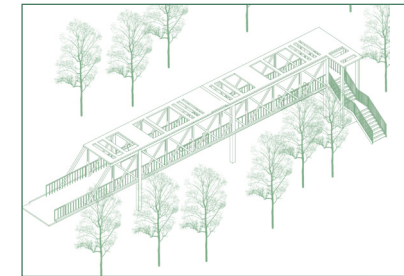
1. An initial sketch of the bridge
 Designed with the intent of creating an observation deck for viewing the activities at the canal.



2. Massing of the bridge
 Understanding the entire mass of the structure.



3. Adding and subtracting masses
 Considering its structural stability and playing with its void spaces.



4. Paying homage through nostalgia
 Incorporating different heritage elements into the design of the structure.



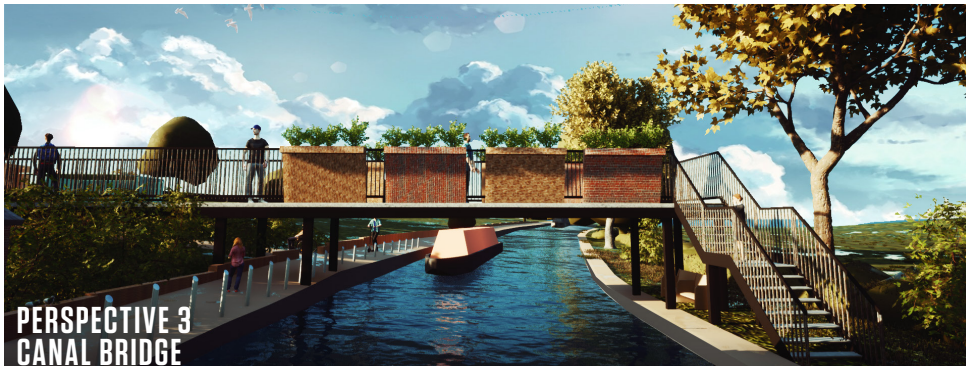
5. Affordability
 Reducing masses to allow for feasibility within its specific context.



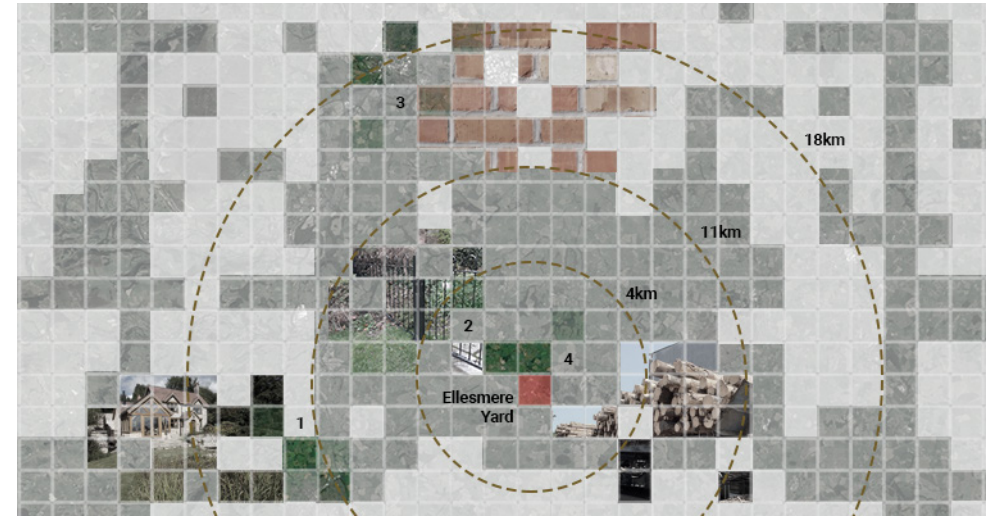
PERSPECTIVE 1
CANAL BRIDGE



PERSPECTIVE 2
CANAL BRIDGE



PERSPECTIVE 3
CANAL BRIDGE

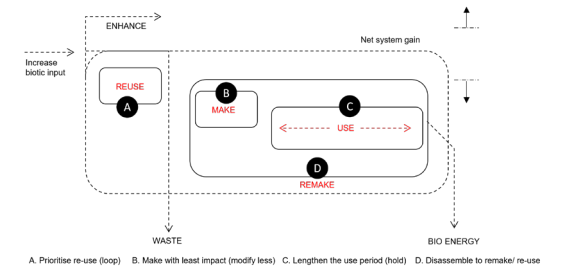


Material Sourcing Mapping

1. Glass : Oswestry Glass Ltd, Oswestry
2. Metal (steel and tin) : Jenston Fabrication, Elson
3. Brick : Brick Slips Manufacturer, Matclad Ltd, Wrexham
4. Timber : ETC Sawmills Ltd, Elson

Circular Economy

The design has evolved around the principle of circular economy. The design emphasizes its use of existing materials and elements within the site that can be re-used to reflect the heritage of the site as well as reduce the wastage and thereby enable circular economy. The materiality collage here represents the different materials and elements that were observed at site to hold value to any new interventions made to the site. The authentic glass windows lining the workshops, the sturdy wooden panels that enclose the interior spaces and the numerous steel fabricated equipments can be used to identify the new design intervention to its site.



Collage of
Material Inspiration On-Site

Field Glamping

The rural field adjacent to Ellesmere Yard offers a unique glamping pod designed specifically to provide additional land space for boat users to enjoy, besides to lure visitors to come to Ellesmere Yard. The glamping pod is modular and can be disassembled when needed to support the principles of circular economy. It is constructed using recycled timber, sourced on site and eco-friendly materials.

Configuration 1

A configuration that caters to couples or solo travelers. Features a compact kitchenette, a small bathroom and alternating pod arrangement (privacy).



1. Flexible space (seating area)
2. Alternating arrangement
3. Flexible space (open space)

Configuration 2

A configuration ideal for families or groups of friends. Features spacious communal areas and leisure spaces (for outdoor cinema, gigs, etc.)



1. Communal seating area
2. Fireplace
3. Outdoor cinema (leisure space)

Layout variations

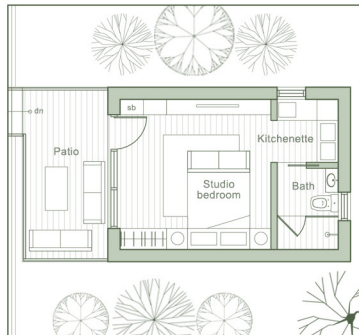


Image Top (Left):
Isometric view of
individual glamping

Image Top (Right):
Isometric view of
communal glamping

Image Bottom (Left):
Ground floor plan of
glamping (variation 1)

Image Bottom (Right):
Ground floor plan of
glamping (variation 2)

Image Top (Page 2):
Perspective view of
individual glamping

Image Bottom (Page 2):
Perspective view of
communal glamping

Field Glamping

Construction: Mortise & Tennon

Mortise & Tennon construction method shall be applied within this project as it allows for greater flexibility for assembly & disassembly of the project. The flexibility within the construction period allows for the availability of the project to be transported, disassembled and reused/repurposed for other unit typology of the project.

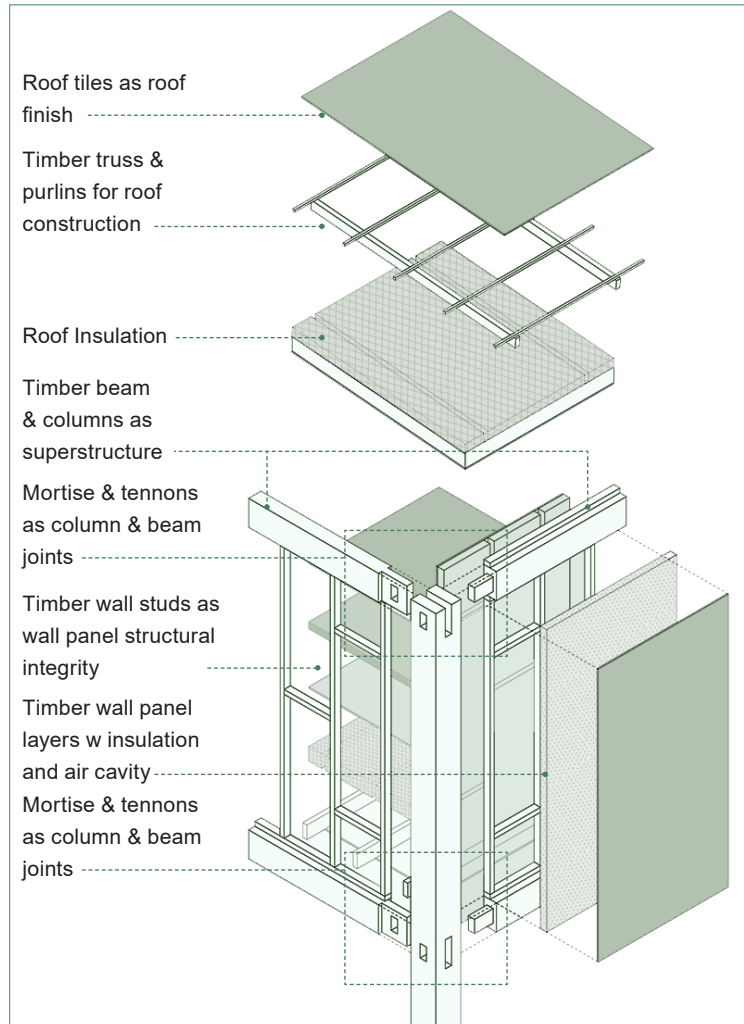
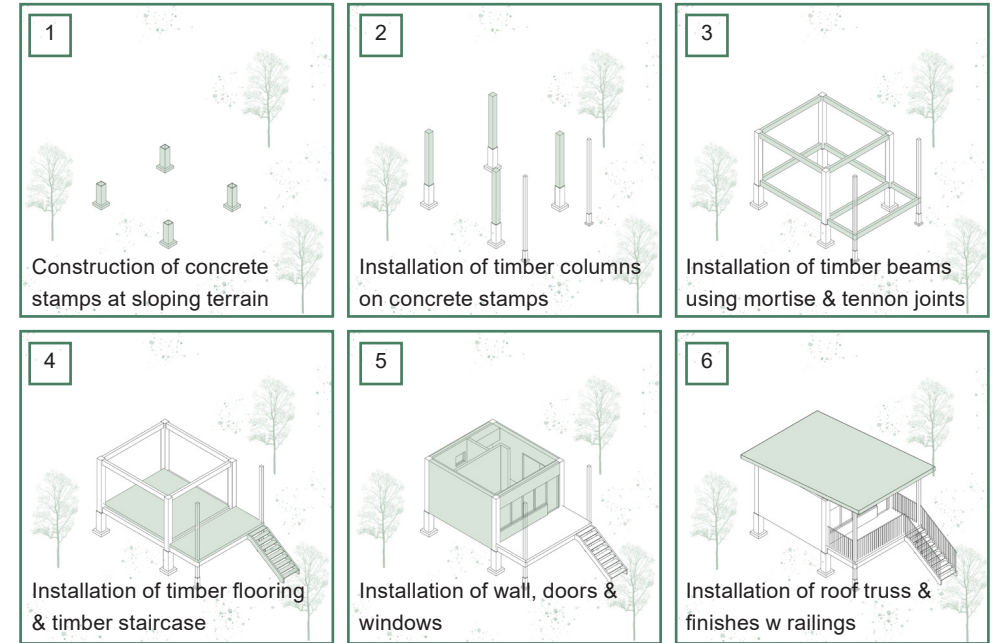


Image Bottom (Left): Exploded construction isometric showcasing the layers & jointings of the glamping pods

Image Top (Right): Construction Sequencing of glamping pods highlighting the flexibility and transportability of the glamping pods

Construction Sequencing: Modular Assembly



Aerial Perspective



ABOUT

Each year the MSA LIVE programme unites Masters Architecture year 1 students with those in BA year 1 and year 2 and Masters Landscape Architecture 1 in mixed-year teams to undertake live projects with external partners to create social impact.

LIVE PROJECTS

All MSA LIVE projects are live. A live project is where an educational organisation and an external partner develop a brief, timescale, and outcome for their mutual benefit.

SOCIAL IMPACT

All MSA LIVE projects have social impact. Social impact is the effect an organization's actions have on the well-being of a community. Our agendas are set by our external collaborators.

EXTERNAL PARTNERS

MSA LIVE projects work with many organisations: charities, community groups, social enterprises, community interest companies, researchers, practitioners and educators.

STUDENT-LED

Our MSA masters students take the lead in the project conception, brief development, delivery and co-ordination of a small project. Other cohorts joined for an eventful 2 weeks of activities at the end of the academic year.

KNOWLEDGE TRANSFER

Working in teams within and across year groups and courses; MSA students participate in peer to peer learning. In addition, collaborators, participants and students engage in the transfer of tangible and intellectual property, expertise, learning and skills.

LARGE SCALE

This year approximately 650 students from 4 cohorts in MSA have worked on 42 projects with partners.

QUESTIONS

For questions about MSA LIVE please contact the MSA LIVE team:

msalive@mmu.ac.uk

BLOG

live.msa.ac.uk/2023

SOCIAL

#MSALive23

@msa.live.23

@TheMSArch

@MLA_TheMSArch

WEBSITE

www.msa.ac.uk