

MANCHESTER SCHOOL OF ARCHITECTURE



THE GREEN GATEWAY

Visit msa.ac.uk for more information

MANCHESTER
1824
The University of Manchester



MSA
LIVE 22

Team

OLIVIA WALTON (M Arch 01)

SAM MASON (M Arch 01)

FROILAN PALACIO (M Arch 01)

DEENESH GUNGAPHUL (M Arch 01)

RYAN EHLERS (M Arch 01)

Luis Escribano Coloma (BA 01)

Eleanor Francis (BA 01)

Martha Banks (BA 01)

Sarah Catherall (BA 01)

Weronika Sadzawicka (BA 01)

Adam Hartopp (BA 02)

Alexia Teodora Borcoman (BA 02)

Jiang Yutong (BA 02)

Jago Campbell (BA 02)

Nuura Ahmed Abdillahi Ahmed (MLA 02)

Partners

Steve Goslyn, who is the local contact for the project, is a founding board member of Chorlton Community Land Trust (CCLT).

CCLT was set up in 2019 as a Community Benefit Society with vision is that local people will be in full control of the design and development of their homes, and the long-term stewardship of the places where they live.

CCLT became interested in the regeneration of the centre of Chorlton through an ambitious ongoing proposal to convert an historic cinema building to a community-owned food, drink, entertainment, recreational and arts space.

This would celebrate its unique history as the birthplace of the Bee Gees and its place in the heart of the community. More recently CCLT has been involved with other organisations and the Council, in developing an ambitious vision for Chorlton. The MSA Green Gateway project will make a valuable contribution to this vision".

Agenda

THE GREEN GATEWAY

The core values of this project focus on rejuvenating Chorlton High Street to transform it into a GREENER place to be. Chorlton is the Gateway to Manchester City Centre therefore improving the public realm for shop keepers, residents, and visitors our proposals will be pivotal in creating a more welcoming entrance to Manchester.

We have worked together to determine an overall zoning masterplan strategy and divided work into specialised teams to create a brochure, a physical model and virtual reality model. The variety of this content will showcase the scheme to its best potential as well as equipped the students with a plethora of skills in which to aid them in their future studies.

The masterplan illustrates the overall vision for rejuvenating Chorlton which includes suggestions such as:

- New signage to highlight use of public transport.
- Introducing bespoke furniture for the public realm.
- Improving shop frontages to introduce more greenery.
- Recycling bins
- Reducing car parking blocking shop fronts

Improvements to the shop frontages are detailed in the virtual model and the bespoke furniture can be seen in the physical models. The combination of the masterplan supported by these models allows for a thorough investigation of the re-visioning the public realm along Barlow Moor Road.

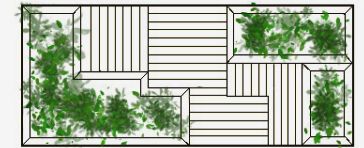
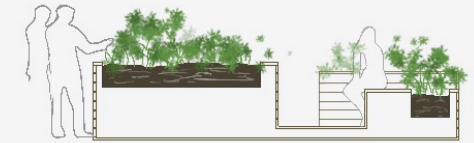
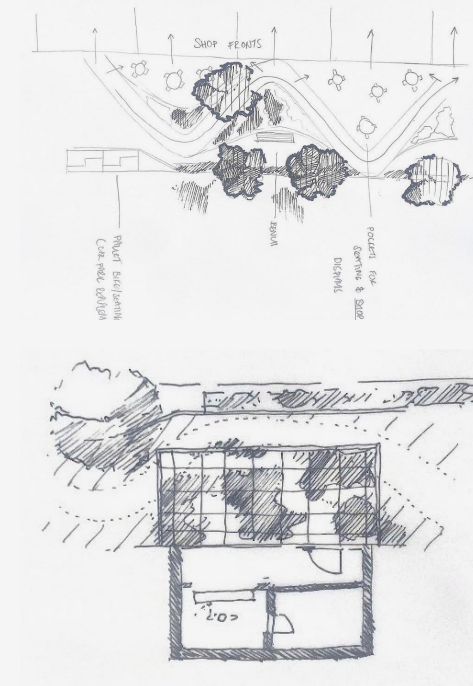
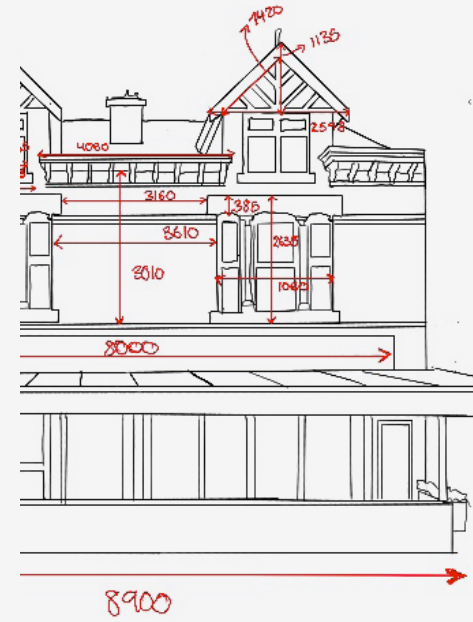
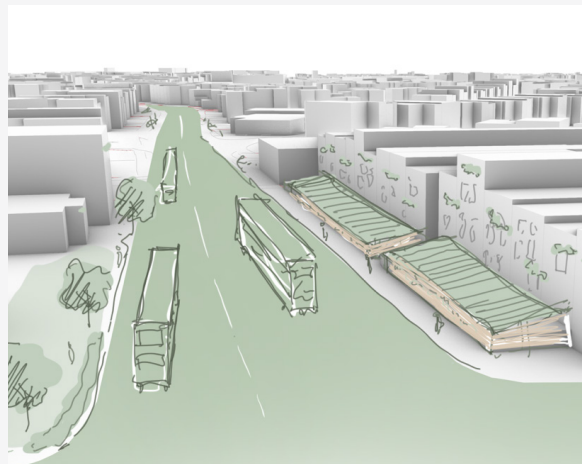
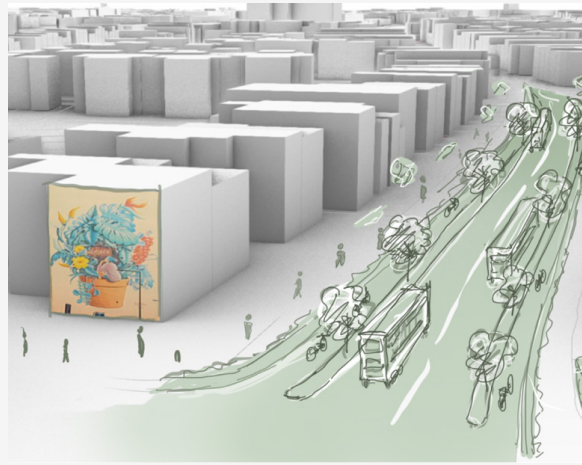
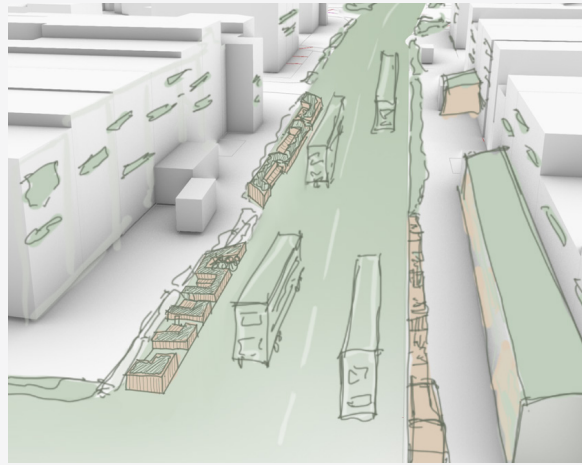


Design Development

The masterplan group were tasked with creating a masterplan for the main highstreet in Chorlton - Barlow Moor Road. This involved focussing on creating a vision for regreening the public realm and suggesting methods to reduce parking and traffic - due to the high levels of pollution in the area.

The green vinettes demonstrate the students specific interventions on site. The first visual shows the bespoke furniture designed to fit the dimension of car parking spaces - this can be seen further in the physical models. The second visual demonstrates the advantages art murals can have to improving the aesthetic of the public realm. The final visual illustrates how adding greenery to the shop frontages, trees to the public realm and green roofs to pergola structures - can improve the overall atmosphere of the street.

The sketches on the following page show the dimension survey drawings, which aided the creation of the revit model and provided the students with surveying skills. The design development sketches illustrate the students ideas of how to improve the shop frontages. These three shop frontages are explored further in the revit model and VR renders.



Masterplan:

The masterplan map demonstrates the locations for the visuals as well as suggesting places for the improved, green bus stop structures, recycling bins, cycle storage etc.

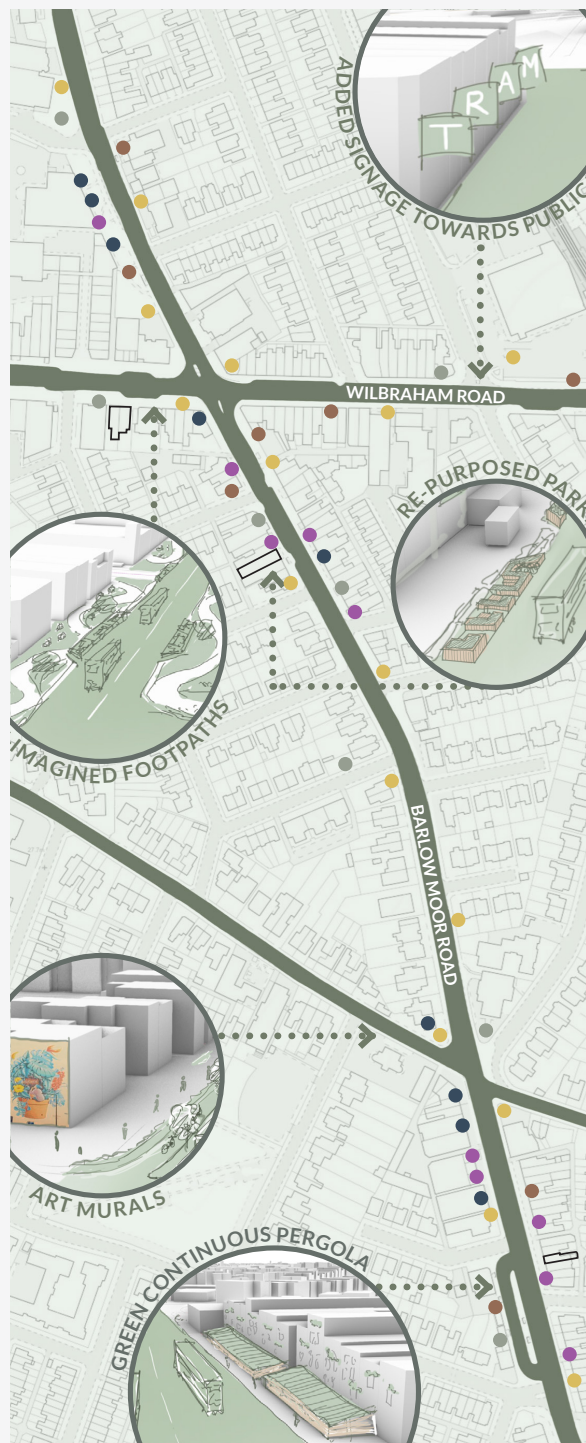
- ART MURALS
- REPLACED PARKING
- RECYCLING BINS
- CYCLE STORAGE
- BUS STOPS

The students produced a brochure to bring together the masterplan, and the shop frontages visuals which showcase their green intervention designs. This brochure will be handed out at the final drop in event where the students presented their final ideas to the community and the client.



Student Engagement

The students engaged well with planning out the shop fronts and masterplan in pairs. We ensured that the students were proactive in creating this vision themselves, but we guided them to engage with precedents and use site knowledge to ensure that these solutions were relevantly placed on the masterplan.



FUNDING + ATTAINABILITY

A critical aspect of this scheme is making our aims attainable. Our interventions should be achievable and also replicable at a smaller scale to encourage engagement in any way possible. We researched funding methods to better market our ideas to residents and shopowners in Chorlton.

Local Supermarket Branches:

ASDA, TESCO, COOP etc. each run community grants programmes for non-profit organisations. The aim is to connect the business philosophy of supplying the community with actual engagement with these communities.

Macc:

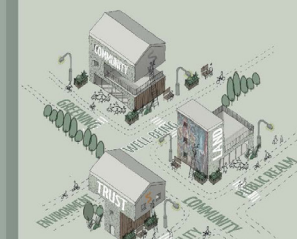
Manchester's local voluntary and support organisation puts together a series of schemes to offer support for community beneficial ideas. They outline a base offering of 200 awards of £100 but also a promise of involvement and promotion of ideas - be it a Queen's jubilee celebration, or a greening project such as ours.

Parks Improvements funding:

Manchester City Council runs a program that over 2020 made £12.5m total available to local projects for parks and green spaces. This programme is more restrictive and rigid on what they offer funding for but our project would be a prime candidate for them as they hope to continue the success of the programme.



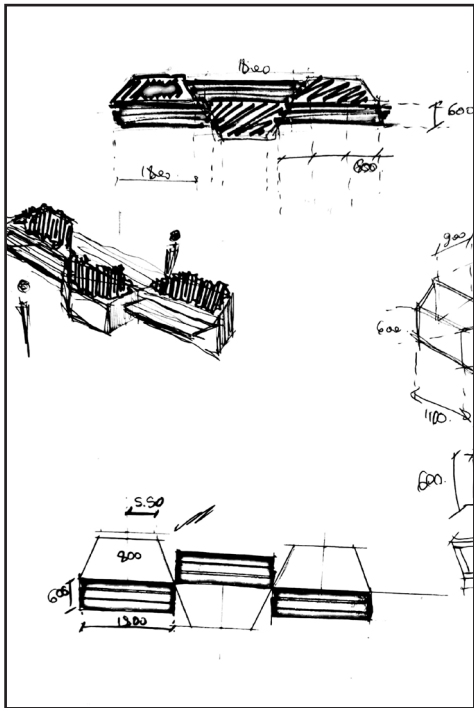
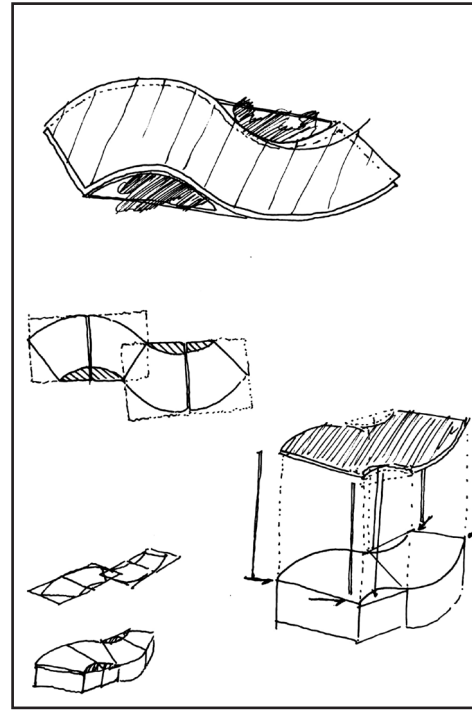
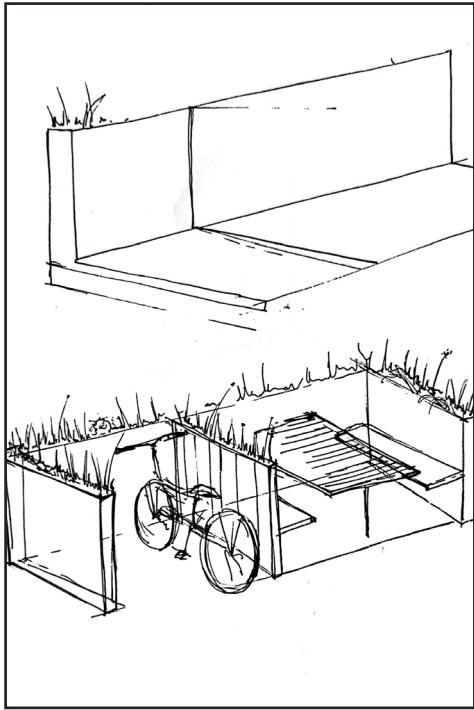
GREEN GATE WAY



We are students from the Manchester School of Architecture working alongside Chorlton Community Land Trust in re-imagining Chorlton, to enhance ways of getting around, improve the environment, and ultimately develop the public realm.

The core values of this project focus on reimagining Chorlton's main thoroughfare to transform it into a GREENER place to be. Improving the public realm for shopkeepers, residents, and visitors, our proposals will be pivotal in creating a more welcoming place for people to spend time in - to work, shop and play.



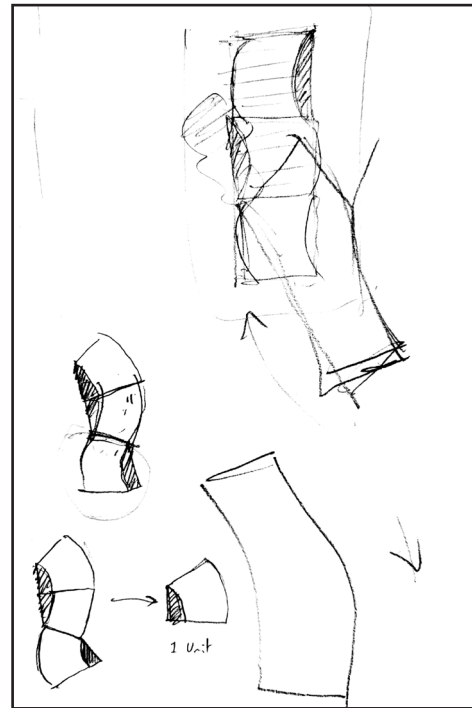


Student Engagement

The students participated in a model making workshop. Generally they were all engaged, with the students trying new techniques of physical modelling and drawing over photographs of models to create atmospheric visuals. All students had the opportunity to create bespoke interventions for the public realm, overall producing unique and relevant designs.

Day 2: Physical Model Making Workshop

The students initially sketched interventions that could be implemented in and around the site, along with the shop fronts. As individuals or pairs they modelled the concepts before moving onto more developed models throughout the week. The students looked into hybrid planters with seating, that could replace bus stops as well as bicycle storages, for the new cycle path.



Intervention Type 1

The first intervention looked at modular seating, which can be expanded or reduced when required. This would replace the existing bus stop to introduce more attractive furniture to the public realm. The DfMA components are proposed from reclaimed wood off-site as a focus on sustainability.

Virtual Model:

Three separate shop fronts were selected for their unique typologies and potential for learning.

The students first had to survey the façades to lay out the dimensions. These were then used to re-create the individual typologies.

This created the opportunity to teach various different modelling techniques which will be vital for the students going forwards at university and in practice.

Once the survey information had been incorporated into the Revit models, we ran an exercise of materiality and setting up Lumion scenes. Creating a series of renders and panoramic views for the VR demonstration.

Student Engagement

Although the students stated that they were keen to learn Revit, we struggled to keep them engaged in the learning stages of setting up the Revit model. However, upon starting the rendering stages in Lumion the students became significantly more engaged with the programme and produced creative outputs used in the final submission.



Zad's Takeaway



Florist and Cake Shop



ABOUT

Each year the MSA LIVE programme unites M Arch. year 01 with B Arch. year 01 and 02 and M Land. Arch 01 in mixed-year teams to undertake live projects with external partners to create social impact.

LIVE PROJECTS

All MSA LIVE projects are live. A live project is where an educational organisation and an external partner develop a brief, timescale, and outcome for their mutual benefit.

SOCIAL IMPACT

All MSA LIVE projects have social impact. Social impact is the effect an organization's actions have on the well-being of a community. Our agendas are set by our external collaborators.

EXTERNAL PARTNERS

MSA LIVE projects work with many organisations: charities, community groups, social enterprises, community interest companies, researchers, practitioners and educators.

STUDENT-LED

Our MSA masters students take the lead in the project conception, brief development, delivery and co-ordination of a small project. Other cohorts joined for an eventful 2 weeks of activities at the end of the academic year.

KNOWLEDGE TRANSFER

Working in teams within and across year groups and courses; MSA students participate in peer to peer learning. In addition, collaborators, participants and students engage in the transfer of tangible and intellectual property, expertise, learning and skills.

LARGE SCALE

This year approximately 550 students from 4 cohorts in MSA have worked on 35 projects with partners.

QUESTIONS

For questions about MSA LIVE please contact the MSA LIVE team:

msalive@mmu.ac.uk

BLOG

live.msa.ac.uk/2022

SOCIAL

#MSALive22

@msa.live.22

@TheMSArch

@MLA_TheMSArch

WEBSITE

www.msa.ac.uk