

MANCHESTER SCHOOL
OF ARCHITECTURE

THE CYCLE -PATHS

PRESENTS

CHORLTON BIKE DELIVERIES

BIKE LIBRARY
BIKE WORKSHOP
COMMUNITY HUB

Visit msa.ac.uk for more information

MANCHESTER
1824
The University of Manchester

Manchester
Metropolitan
University

AU?



MSA
LIVE 22

Team

Daryl Lee Quayle (M Arch 01)

Jiawei Liu (M Arch 01)

Karishma Dayalji (M Arch 01)

Leona Somerville (M Arch 01)

Bugse Palali (BA 01)

Rojda Gulel (BA 01)

Sena Yagmur Gurbuz (BA 01)

Dominic Edwards (BA 01)

Maria Camila Hernandez Portella (BA 01)

Edward Warren (BA 02)

Niya Lijo Kankapadan (BA 02)

Jacqueline Moya Ndiaye (BA 02)

Nina Roscoe (BA 02)

Yiming Chen (BA 02)

Partners

Chorlton Bike Deliveries is a non-for-profit cooperative deeply rooted in Chorlton. The 20 riders that form this cooperative support the community in 2 ways: firstly, they deliver bulky groceries to those that are vulnerable and secondly, they do so by utilising locally owned, independent shops and businesses. Whilst Chorlton Bike Deliveries support the local community and their local economy, the cooperative thrive in protecting the environment by proudly promoting cycling as a sustainable alternative to vehicles.

Therefore, social change is at the heart of Chorlton Bike Deliveries. They see delivering on bikes as a powerful tool to offer a free community service, fight food poverty, offer paid work, all whilst protecting the environment. In promoting cycling as sustainable alternative to cars, Chorlton Bike Deliveries aims to reduce carbon emissions and instead create a healthy environment in which the people and children of the community can safely walk, cycle and play in.

Architecture Unknown puts people, place and communities at the heart of their practice. Their aim through design is bringing people together, by creating a dialogue between neighbours. The practice have previously worked with Chorlton Bike Deliveries providing the organisation a Bike Hub proposal.

Agenda

The Cycle-Paths

The Cycle-Paths project is to design a 'Bike Hub' for Chorlton Bike Deliveries. As Chorlton Bike Deliveries grows across Chorlton and beyond, their existing infrastructure to store their bikes is becoming too small. Therefore, a safe storage place for their delivery bikes and trikes is at the centre of the project brief, with a larger vision of a Bike Hub. The Bike hub is to encapsulate:

- bike storage
- a bike library - a free rental bike service
- a recycling bike project - a repair workshop
- refrigeration space to store groceries
- and a social space to promote and support cycling and walking.

Currently premise and ownership is a major challenge in Chorlton - as a result three sites around Chorlton are offered to the students, which are either temporary or derelict. However, in turn these sites offer opportunities of sustainable design solutions. Sustainability is a strong ethic of Chorlton Bike Deliveries, therefore the students will work in teams to propose a design for each site that integrate aspects of reuse in their proposals. The sites will initiate discussions within the groups that encourage to critically think about sustainable alternatives to traditional design solutions, particularly when there is a limited budget.

Collaboration between all stakeholders is also key the Cycle-Paths project. As there are many aspects to the project brief, it is essential that our team as well as the design teams communicate and engage with the Chorlton Bike Deliveries and Architecture Unknown to ensure that the agendas of the project are addressed through the process of design.

A Collaborative Session

Site Visits with Chorlton Bike Deliveries & Architecture Unknown

To begin designing for the Cycle-Path project, it was essential for the team to visit the three sites in Chorlton – the Chorlton Precinct, the Old Police Precinct and Chorlton Park. Therefore, it was befitting to start the intensive week by meeting in one of the proposed sites, Chorlton Park. Though it was a rainy start to the day, the team met up for the first time, where we first introduced ourselves, the members from Chorlton Bike Deliveries (CBD) and Architecture Unknown (AU). It was also an opportunity to informally introduce the project brief and the week structures.

Our blog was an essential platform that introduced the three proposed sites prior to our initial meeting. It allowed the students to familiarise themselves with the different opportunities the sites offered. This allowed to organise the students into groups on sites they wanted to design for – we believe this strategy was key in motivating the students in their projects.

The design teams then visited their sites with a MArch student and a CBD member (access to the sites was arranged by CBD). Furthermore, the team that visited the Old Police Precinct was also accompanied by Dan from AU. We arranged for

this strategy to ensure there was a collaboration between the design teams and the partners involved in the project.

Whilst we guided the design teams to note, sketch and photograph the fundamental aspects of site analysis, it was also a period of time which allowed the students to communicate with a CBD member – an opportunity to ask questions and further understand the project brief and their programme. Each site initiated different conversations that discussed the temporality of spaces and community integration/engagement. With the support of Dan, the design team of the Old Police Precinct benefitted from additional conversations about the structure of the derelict building – an aspect which is essential in a reuse project.

The first day was a successful collaboration between us, the design teams, CBD and AU – interesting discussions that arose from this collaborative session further aided the student's understanding of the project brief, as they were conversations which the design teams then brought forward in their initial design development.

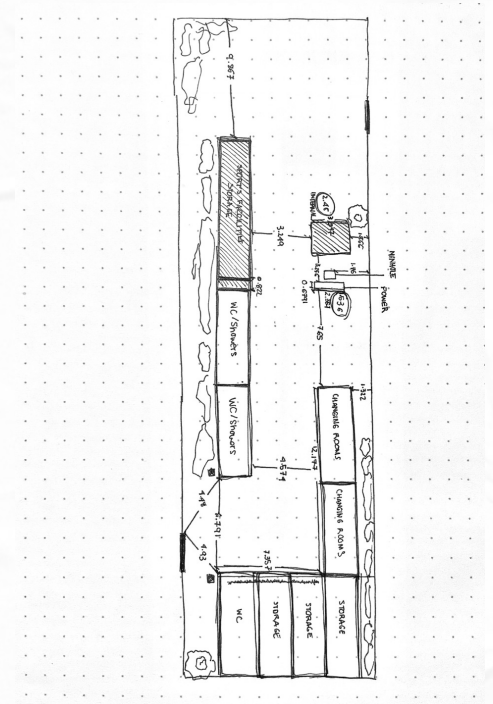


Image Top (left):
Initial meeting in Chorlton Park

Image Top (right):
The Old Police Precinct site

Image Middle-Bottom (left):
The Chorlton Park site

Image Bottom (Left):
Chorlton Precinct Site

Image Bottom (Right):
Site analysis of the Chorlton Park site (by the Chorlton Park team)

Design Week

Design Development of the Three Sites

The two intensive weeks were divided into 'design' and 'showcase'. The first week focussed on the 'design', where the teams developed their proposals in response to the brief and the conversations they had with CBD and AU.

We returned to our studio space the next day, where we more formally presented to the students the brief, outputs and week structures. To inspire the students, we presented AU's Bike Hub proposal for the Old Police Precinct. We intentionally did not share the entire proposal with the students, to ensure the teams produced original designs. Rather we studied the complexities of the spaces, whilst taking note of the key areas of the spaces.

The teams then organised these areas onto their sites through sketching. Whilst we planned the entire 'design week' to be a process of sketching, the teams quickly translated their sketches onto AutoCAD or SketchUp. This was a necessary step for the teams to accurately strategise the areas within the existing spaces of their sites.

However, this was a challenge for a particular team with no experience with AutoCAD but voiced their opinion on wanting to learn

the software. Whilst the Cycle-Path project is to deliver design proposals, we aspire for this project to also be an opportunity to gain new skills. Therefore a member of our team provided a 1:1 workshop, teaching the software through their design concept.

Whilst we had two in-person studio days, the remaining days of the week were over Teams, where the design teams presented their progress. It was an engaging opportunity for open discussions, where together we evaluated the feasibility of their projects. A reoccurring problem with all three sites was the limited space for the entire programme. Therefore, the students used precedents that exhibited sustainable and efficient design solutions, making their design process rigorous and thorough.

We ended the 'design week' by reflecting on the progress made during the week. We also intended to end the week by dividing the design teams further into groups ahead of the 'showcase week', however, the teams required further time to refine the projects. Therefore, the following week began by developing the proposals, whilst ensuring each student had a role to efficiently produce the outputs during the remaining of the 'showcase week'.

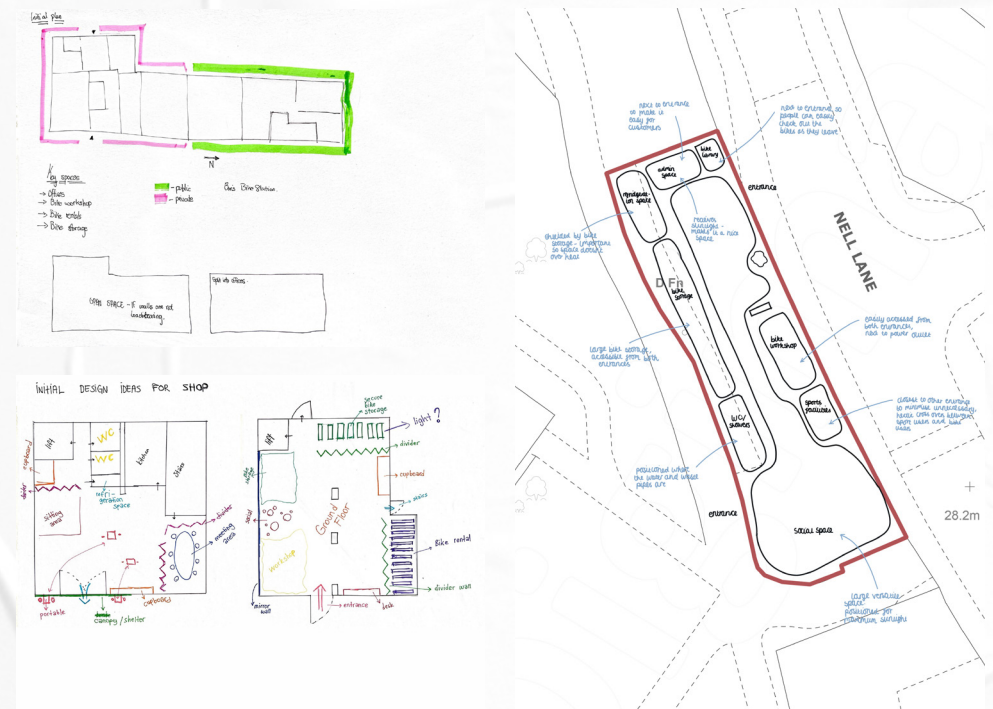


Image Top:
Studio session, providing design tutorial with the three teams

Image Left-Middle:
Development sketch of organising the programmes (by the Old Police Precinct team)

Image Left-Bottom:
Development sketch of organising the programmes (by Chorlton Precinct team)

Image Bottom-Right:
Development sketch of organising the programmes (by Chorlton Park team)

Showcase Day

Presenting the Final Proposals

The two intensive weeks were celebrated by the showcasing of the three design proposals. Hosted in yet another community space of Chorlton, the design teams presented their proposals to members of CBD and AU in The Youth Centre of St. Clement's Church.

We began the event by introducing to our guests, the project brief and the student's progress made over the two weeks. Each team was then given 15 minutes to present their projects, explaining to our guests the key considerations of their designs – a task which all three teams confidently accomplished. Following each presentation, each team had another 15 minutes to receive feedback from our guests. Overall, each team received high praises and positive feedback, particularly impressed with how each design team transformed the derelict spaces into vibrant and engaging community places, further requesting before and after pictures on our blog. More specifically they were impressed with how both the Old Police Precinct and the Precinct Shop groups successfully used sustainable materials to create public and private spaces, whilst also admiring how the Chorlton Park group organised the programme in response to their site analysis,

creating an integrating space with surrounding communities.

Whilst these successes of the showcase day are a positive reflection of our organisation and management, the design teams also received comments from our guests on adding more detail in the plans to read and understand where the site sits in context, as well as ensuring all team members contribute in presenting. Perhaps, this is a comment we can also improve on in our role as the architect, to check the final drawings are refined before publishing, as well as to ensure each member of the team has an assigned role when presenting.

The 15 minutes of open discussion following each presentation was a great opportunity for collaboration – it was an opportunity where our guests engaged with the design teams and their design proposals. Not only did the guests ask questions to fully understand the projects, but they also shared design ideas to further enhance the proposals. The showcase day was filled with Bike Hub projects and collaboration – a response to the Cycle-Paths agenda.

The following pages showcase the three final design proposals by the design team.

Image Top:
Welcoming our guests

Image Bottom:
Chorlton Precinct team
presenting

Image Top (next page):
The Old Police Precinct
team presenting

Image Bottom (next team):
Chorlton Park team
presenting

Poster 1:
Chorlton Precinct
(Team: Bugse Palali,
Rojda Gulel, Sena Yagmur
Gurbuz)

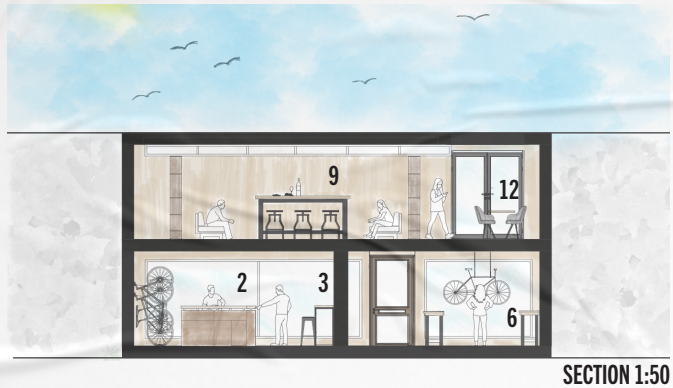
Poster 2:
The Old Police Precinct
(Team: Dominic Edwards,
Edward Warren, Jacqueline
Moya Ndiaye)

Poster 3:
Chorlton Park
(Team: Maria Camila
Hernandez Portella, Niya
Lijo Kankapadan, Nina
Roscoe)





CHORLTON PRECINCT



This is our design proposal for The Bike Hub. Due to the temporality of the shop at Chorlton Precinct, we created a permanent but mobile design - a vital aspect of the project brief.

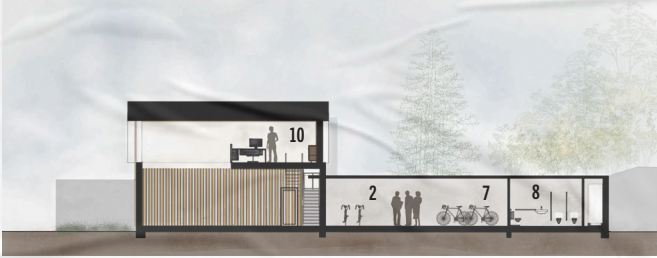
Dividing the designated areas in such a compact space was a challenge however we were able to develop an efficient programme, enhancing the building as a whole.



- KEY**
- 1. ENTRANCE
 - 2. BIKE LIBRARY
 - 3. SOCIAL AREA
 - 4. TRAILER
 - 5. INDIVIDUAL BIKE STORAGE
 - 6. BIKE WORKSHOP
 - 7. TOILETS AND SHOWER
 - 8. STORAGE
 - 9. OPEN PLAN OFFICE
 - 10. KITCHEN
 - 11. LOCKERS
 - 12. MEETING ROOM
 - 13. OUTDOOR SOCIAL SPACE



INTERNAL VIEWS OF THE BIKE HUB



SECTION 1:100

Our primary design considerations for The Old Police Precinct centered around sense of community, usability and security. Social spaces and an open plan design create room for discussion and interaction, and the hit-and-miss timber walls act as a low-cost, sustainable method of dividing spaces while keeping them bathed in natural light. Externally they act to increase security and create a greater sense of aesthetic cohesion between the whole unit.



GROUND & FIRST FLOOR PLAN 1:100

KEY

1. ENTRANCE
2. BIKE STORAGE
3. SOCIAL AREA
4. TRAILER
5. INDIVIDUAL BIKE STORAGE
6. STAIRWAY
7. BIKE WORKSHOP
8. TOILETS AND SHOWER
9. MISCELLANEOUS STORAGE
10. OFFICE

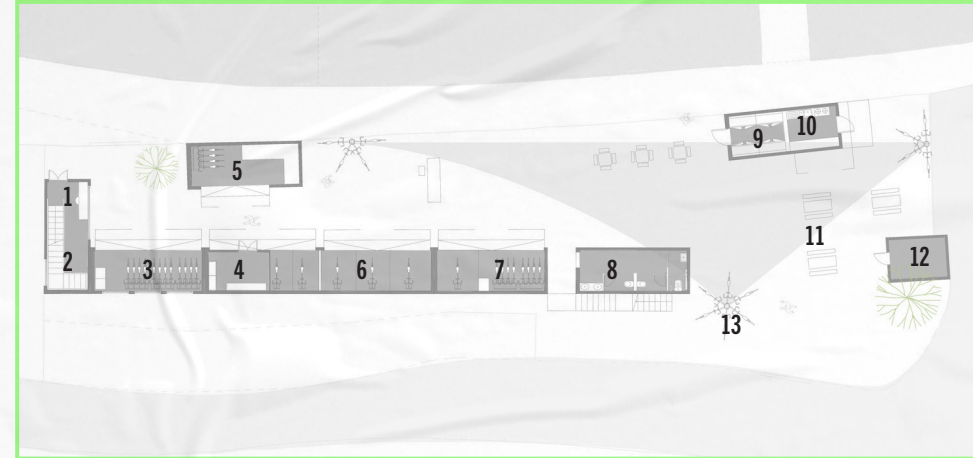


VIEW FROM BARLOW MOORE ROAD



VIEW OF THE BIKE STORAGE & WORKSHOP

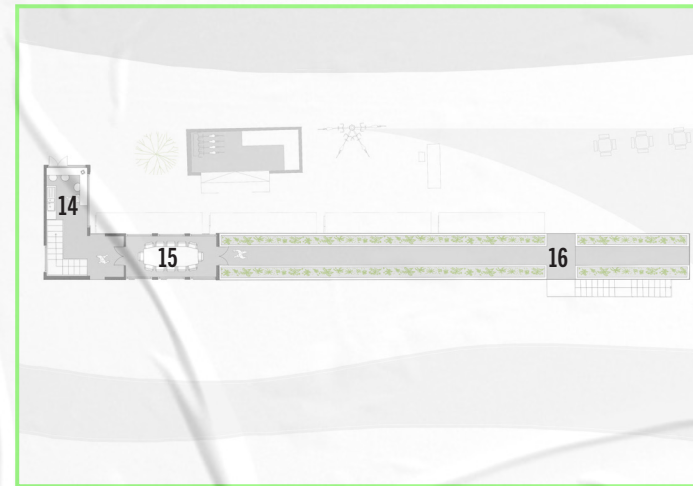
This project provides Chorlton Bike Deliveries a sustainable solution, where the condemned containers on site have been upcycled. The playful arrangement of the shipping containers separates the public from the private. However, the proposal also allows CBD to interact with the existing communities of the park. The design allows easy accesibility and movement of people and bikes, blurring the boundary between the site and the public park .



GROUND FLOOR PLAN 1:100

KEY

1. RECEPTION
2. LOCKERS/STORAGE
3. BIKE LIBRARY
4. STORAGE/CHANGING ROOM
5. WORKSHOP
6. BIKE STORAGE
7. BIKES FOR REFUGEES
8. WC
9. REFRIGERATION
10. TIBETAN KITCHEN CAFE
11. SOCIAL SPACE
12. SPORTS FACILITIES
13. PUBLIC BIKE RACKS
14. STAFF ROOM
15. MEETING ROOM
16. GARDEN ROOFTOP



FIRST FLOOR PLAN 1:100

ABOUT

Each year the MSA LIVE programme unites M Arch. year 01 with B Arch. year 01 and 02 and M Land. Arch 01 in mixed-year teams to undertake live projects with external partners to create social impact.

LIVE PROJECTS

All MSA LIVE projects are live. A live project is where an educational organisation and an external partner develop a brief, timescale, and outcome for their mutual benefit.

SOCIAL IMPACT

All MSA LIVE projects have social impact. Social impact is the effect an organization's actions have on the well-being of a community. Our agendas are set by our external collaborators.

EXTERNAL PARTNERS

MSA LIVE projects work with many organisations: charities, community groups, social enterprises, community interest companies, researchers, practitioners and educators.

STUDENT-LED

Our MSA masters students take the lead in the project conception, brief development, delivery and co-ordination of a small project. Other cohorts joined for an eventful 2 weeks of activities at the end of the academic year.

KNOWLEDGE TRANSFER

Working in teams within and across year groups and courses; MSA students participate in peer to peer learning. In addition, collaborators, participants and students engage in the transfer of tangible and intellectual property, expertise, learning and skills.

LARGE SCALE

This year approximately 550 students from 4 cohorts in MSA have worked on 35 projects with partners.

QUESTIONS

For questions about MSA LIVE please contact the MSA LIVE team:

msalive@mmu.ac.uk

BLOG

live.msa.ac.uk/2022

SOCIAL

#MSALive22

@msa.live.22

@TheMSArch

@MLA_TheMSArch

WEBSITE

www.msa.ac.uk