

MANCHESTER SCHOOL OF ARCHITECTURE



Visit msa.ac.uk for more information



**MSA
LIVE 22**

Team

Agrima Sharma (M Arch 01)

Charlotte Keen (M Arch 01)

Kian Hennessey (M Arch 01)

Oliver Porter (M Arch 01)

Rasaq Ayomide Yishawu (M Arch 01)

Byron Guaicha Villagomez (BA 01)

Lottie Hargreaves (BA 01)

Richard Power (BA 01)

Rufus Wells (BA 01)

Zhou Jiaxu (BA 01)

Jakub Rammel (BA 02)

Jay Hooper (BA 02)

Saif Hajazi (BA 02)

Silvia Nedyalkova (BA 02)

Toluwalase Delight Olojede (BA 02)

Partners

Youth House Co-op is the primary partner working with the MSA Live team. It is a voluntary organisation established in 2018 to help meet the needs of homeless and vulnerable people, particularly young people between the age group of 16-25 in Manchester, UK.

In the early 2000s, having experienced homelessness herself, Debi Blanshard (the founder of the co-op), started housing the vulnerable target group. Apart from providing them with secure and suitable accommodation under different landlords, she also supported them in maintaining their tenancies. In the process of doing so, she created relationships with the current board members of the co-op, who struggled with homelessness at that time.

Daniel Smith (a rough sleeper for seven years), was part of a group of young homeless people who socialised and slept under railway arches at Gore Street, Salford. He was brutally battered by two thugs high on Spice - Luke Benson and Adam Acton - and sadly left for dead in a tent in 2017. This incident led to a wave of uncertainty amongst the homeless community in Manchester. A lack of support from the council on this issue led Debi and the team to set up the youth house co-op.

Lifeshare and Greater Manchester Housing Action(GMHA) are the secondary collaborators in this project. Lifeshare is Manchester's oldest charity dedicated to supporting homeless and vulnerable people in Greater Manchester.

GHMA was founded in November 2015 in the context of the worsening housing crisis and city-regional devolution. They are a key actor in a growing and increasingly powerful housing movement in the city.

Agenda

Living Up

"Living-Up" is Youth House Co-ops first large scale step towards homelessness in Manchester. The project site is located on the Empress Street car park, Old Trafford, Manchester.

During this project, the MSA Live team has been tasked with two deliverables: building a profile for Youth House Co-op; and developing a modular and sustainable masterplan for the project which could potentially be adapted to different sites in the city.

According to Barlow in 2020, 5500 young people across Greater Manchester sought help from their local authority because they were homeless or risked being homeless. A report by Housing Rights in 2015 stated that 42% of local governments lack an adequate range of instruments to avoid juvenile homelessness; with 23% of young people who approached their local municipality for assistance had their homelessness prevented or alleviated.

According to Diaz, 2005, 80% to 90% of homeless people are unemployed. Housing associations refer to the lack of certain financial qualifications of these youths as 'limited access to income or welfare' and on this note reject applications from individuals within this age bracket regardless of whether they are homeless or referred by the council.

The aim is to create a one of a kind scheme for the young homeless people - a co-living development wherein rather than paying rent to someone else, members of the housing scheme would manage the property themselves. The co-op would train the residents with various life skills to enable long term employment with continued support that considers mental well-being and other life skills to create permanent change.

As this MSA Live project operates over both undergraduate and masters degrees there is ample opportunity for skill transference between students. Therefore, we have provided a number of workshops in both analogue and digital design techniques. To ensure all members of the team are encouraged to engage with the project, and to generate as many ideas for the project as possible, we whittled two concept designs from week one of MSA Live into one developed scheme in week two along with the organization profile. This document highlights the development and outcomes of these two deliverables.

Client Bio

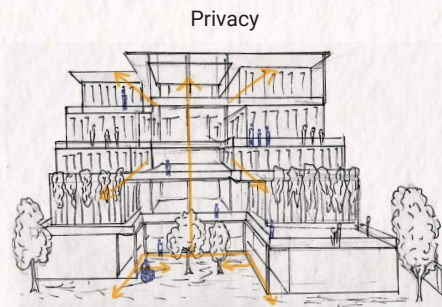


Debi Blanshard

Debi has always been involved in working with squatters since squatting herself years ago as a teenager. Debi met some young squatters who had been in the Gary Neville squatted hotel and decided that they want to do something for their community. So, the youth house co-op was founded in 2018.

The death of Daniel Smith in 2017 made them realise that something on a big scale, and with long term impact needed to be done to change the rising numbers of squatters left outside. So, they decided to act themselves and build the alternative.

The most important design feature for Debi is a space with clear visibility in communal areas and corridors so that the residents feel safe and not isolated.

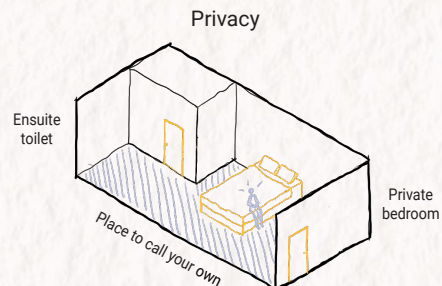


Caitlin McLaughlin

Caitlin has been a part of the Youth House Co-op since 2018 and has been involved with the team to gather information required to support and provide housing for young people experiencing homelessness, alongside completing a BA Hons. in Social Work.

The most significant influence for Caitlin behind setting up Youth House was the rising figures of individuals facing homelessness in Manchester and the lack of support for young homeless individuals.

The most important design feature for Caitlin is a spacious living space, including an ensuite toilet and shower to maintain privacy.



Client Bio

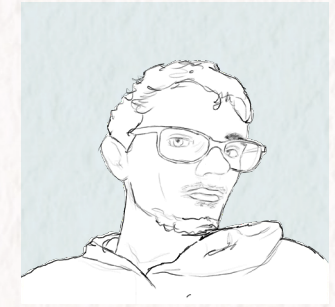
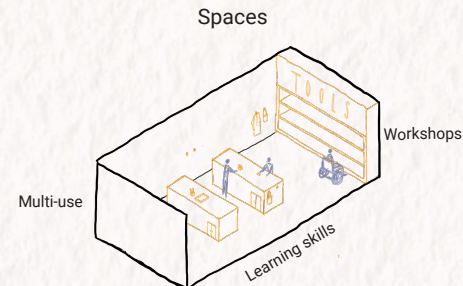


Liam McLoughlin

Since the beginning of the project, Liam has been a part of the team and has played a key role in building ideas on how to ensure safety and provide shelter for young homeless people within Greater Manchester.

The most significant influence for Liam was to give the right provisions to vulnerable individuals who are struggling to find support.

The most important design feature for Liam in this project is providing safe and secure workshop spaces for the young people, so that they can get trained with different life skills to support their life ahead.

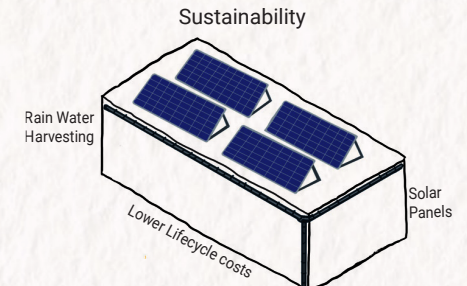


Conor Durand

Conor started working with the co-op in 2018 as one of the construction heads to make a difference in the current housing situation for young people in Manchester.

Prior to this, Conor has been part of various groups working towards the issue of homelessness. Through this, they realised that there was a level of unfairness in the process of providing homes to the youth. This was the main influence for them to be a part of the Youth House Co-op.

The most important design feature for Conor is the practical and sustainable social and environmental aspect of the project. This would help them to decrease the overall life cycle costs of the project using renewable sources.



Client Bio

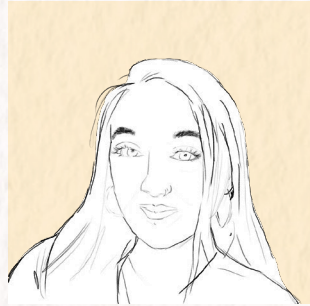
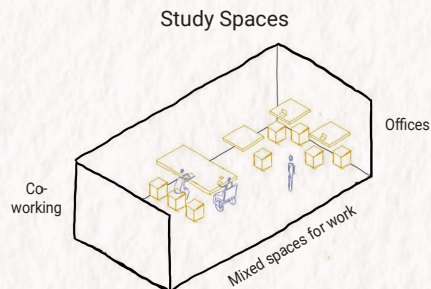


Kieran Tella

Kieran has been a part of Youth House since 2018 alongside pursuing BSc Hons. in Construction management. Kieran has been working on the construction front of the co-op in order to provide safe housing for young people.

The most significant influence behind setting up Youth House was to help young people in Manchester find a secure home since the amount of young homeless people has been on a rise in the city.

The most important design feature for Kieran is the courtyard and study/work spaces. This would provide a space for the residents to socialise and empower them for the future.

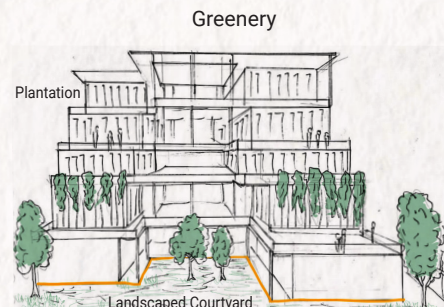


Simone Thornton

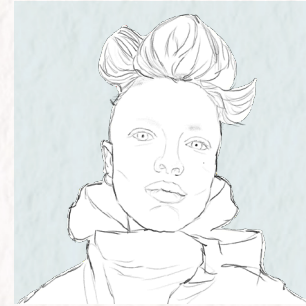
Simone has been involved with the Youth House Co-op since 2019. Growing up in Manchester, Simone struggled to find an accommodation that was affordable and realised there was a lack of support for young people.

The most significant influence for her to join Youth House was working towards solving youth homelessness and implementing changes in the system to make it fair for young people in terms of housing.

As a nursing student of mental health, the most important design feature for Simone is the provision of safe green spaces that would have a positive impact on the mental health of future residents.



Client Bio

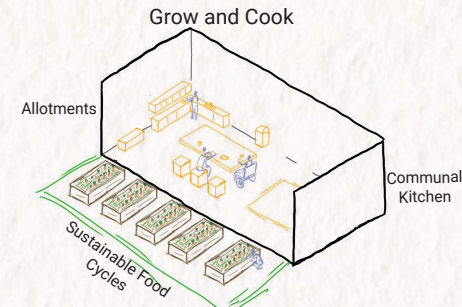


S.B. Cooper

S.B. is connected with Youth House Co-op since 2018, bringing in more people to form the cooperative. Before this, S.B. joined Greater Manchester Housing Action Group in 2015 to participate with a network of people from different backgrounds and experiences to collectively raise voices in the campaign for housing events.

Having faced hidden homelessness and mental health issues, S.B.'s most significant reason for involvement with Youth House Co-op was to address the root cause of the lack of secure housing for young people.

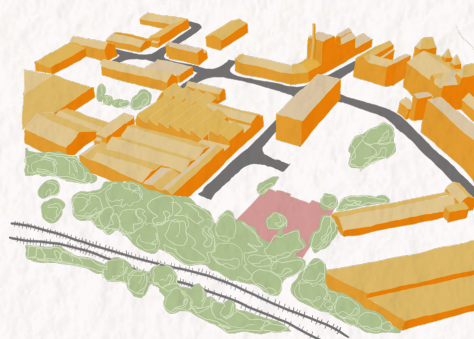
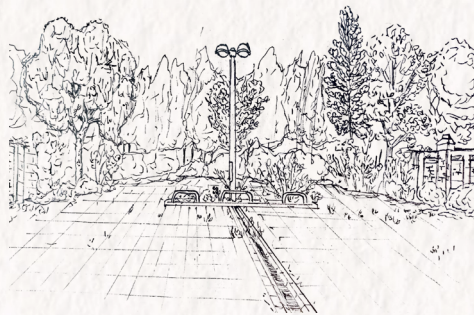
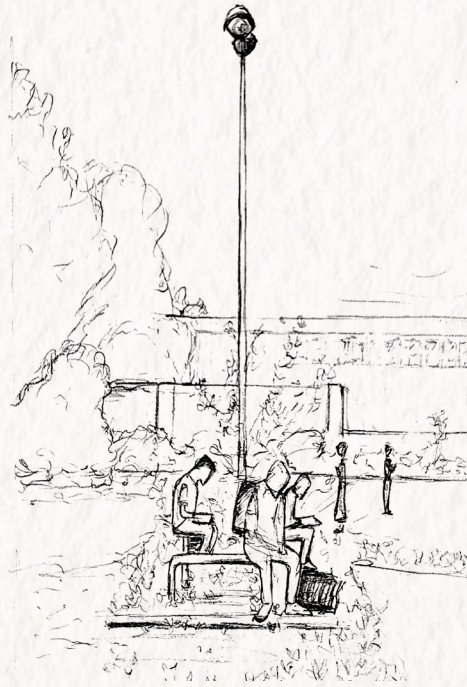
Their most important design feature is having a space to grow and cook food to provide nutrition and share experiences.



Client Meeting and Site Visit

On the first day of the action week, we had a meeting with the Youth House Co-op team to understand their vision for the project. We were made aware of the issues and concerns regarding the site and its location.

Further to this, the MSA Live team went on a site visit and analysed the strengths and weaknesses of the site. To visualise the site better, the team made some live sketches at site. Followed by this, we had a session with an occupational therapist to understand the correct ways to make an accessible and inclusive design proposal.

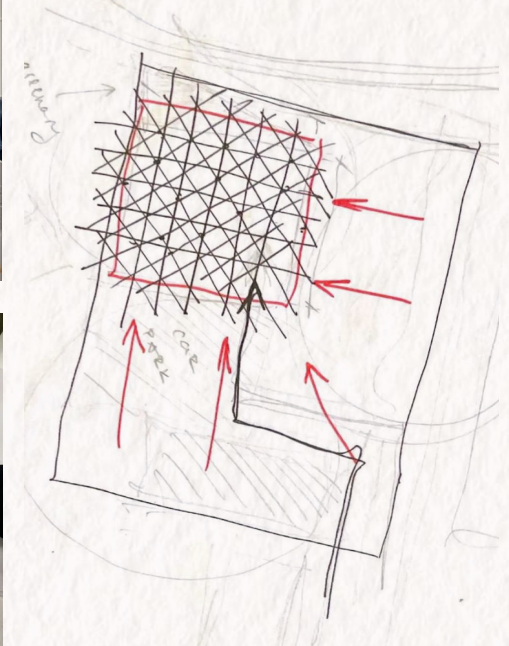
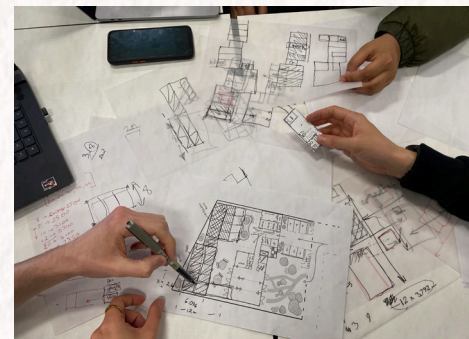
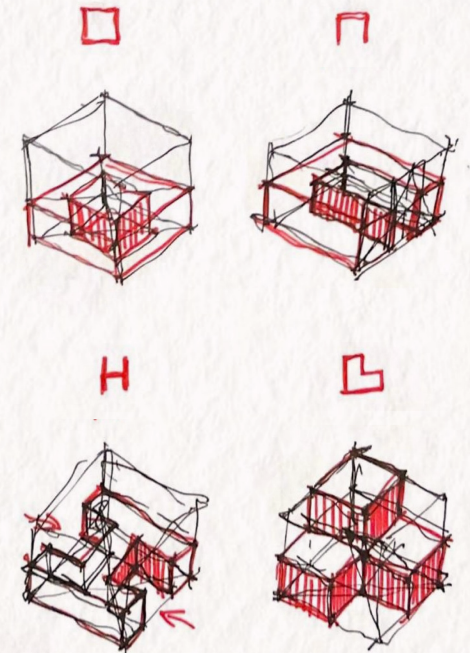


Big Draw and Spatial Planning

After the initial site visit and client meeting, the team was divided into two groups to work on two different concept proposals for the project.

In order to make this exercise interesting, the team used 1:100 printed modules and were then arranged on the site plan to understand the scale of the project. Following this, the groups started exploring various massing options and developed them in Week 01.

At the end of Week 01, we presented the two proposals to the client and worked on the selected proposal in Week 02.



Design Proposal

Conceptual Proposal 01 & 02

Proposal 01

This proposal was based on providing a cost effective scheme along with maximising the sunlight inside the building.



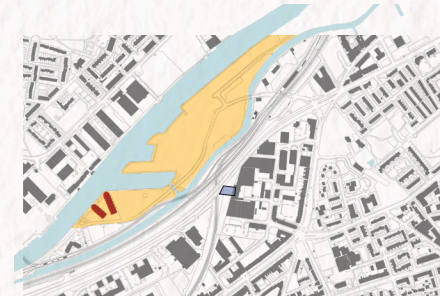
Proposal 2

This proposal was based on providing an open multi-purpose scheme with communal terraces on all the floors for social interaction.



Final Design Proposal

Site Analysis



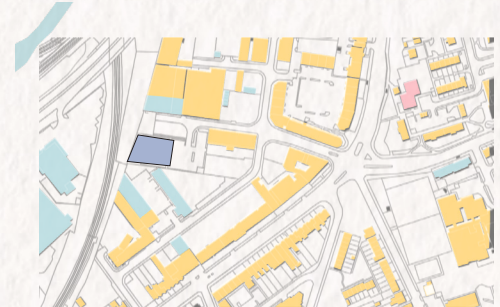
Site Location



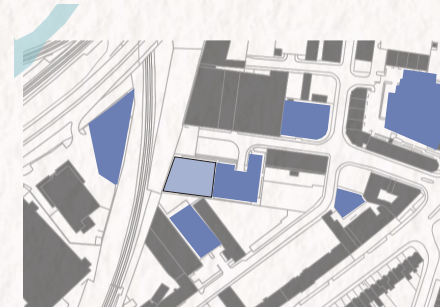
Transport / Accessibility



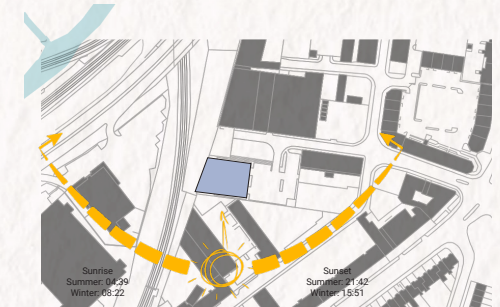
Building Use



Building Materiality



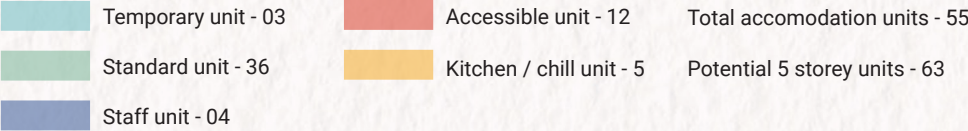
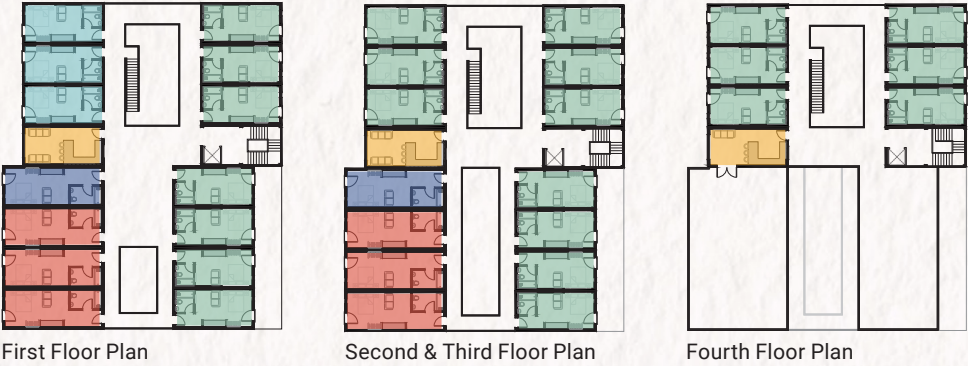
Nearby Car Parks



Sun Path

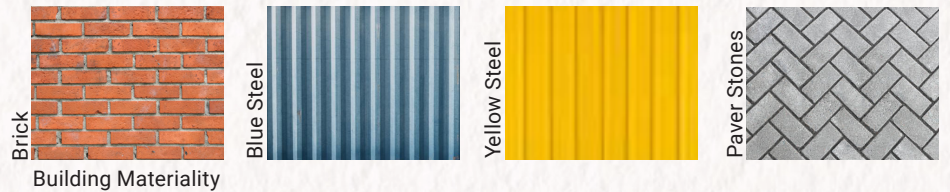
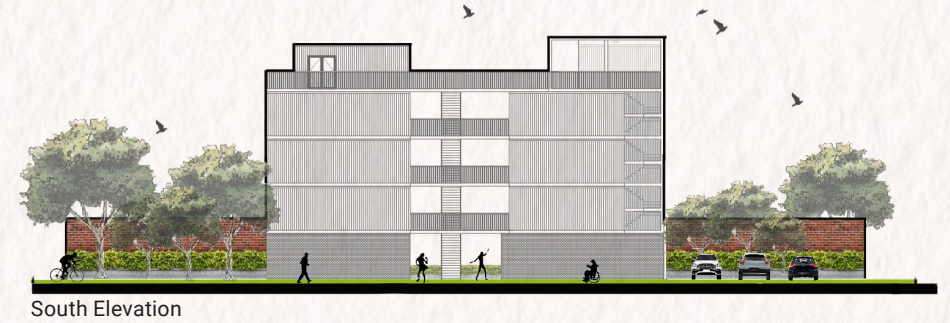
Final Design Proposal

Floor Plans



Final Design Proposal

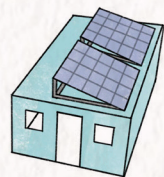
Elevations and Section



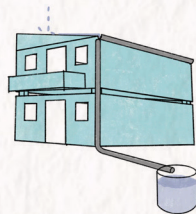
Final Design Proposal

Sustainable Features

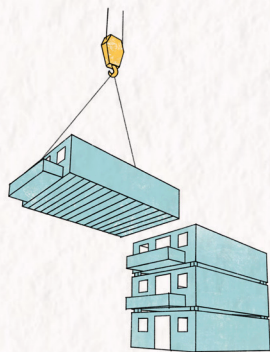
Environmental Sustainability



Solar Panels

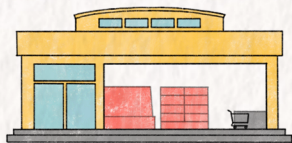


Rain Water Harvesting

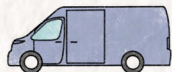


Prefabricated Modular Shipping container units

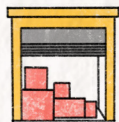
Social Sustainability



Local Food Supplies
Partnerships with local food suppliers to collect surplus food



Transportation
Electric vans will collect and transport the food



Food Bank + Store
Surplus food is stored at our on-site food bank



Allotments
On-site allotments provide fresh food + food education



Community Kitchens
Residents and staff use food from allotments + food bank to cook in community kitchens and cooking classes

Final Design Proposal

Key Views



Front Graffiti Wall



Internal Courtyard



View from the front courtyard

ABOUT

Each year the MSA LIVE programme unites M Arch. year 01 with B Arch. year 01 and 02 and M Land. Arch 01 in mixed-year teams to undertake live projects with external partners to create social impact.

LIVE PROJECTS

All MSA LIVE projects are live. A live project is where an educational organisation and an external partner develop a brief, timescale, and outcome for their mutual benefit.

SOCIAL IMPACT

All MSA LIVE projects have social impact. Social impact is the effect an organization's actions have on the well-being of a community. Our agendas are set by our external collaborators.

EXTERNAL PARTNERS

MSA LIVE projects work with many organisations: charities, community groups, social enterprises, community interest companies, researchers, practitioners and educators.

STUDENT-LED

Our MSA masters students take the lead in the project conception, brief development, delivery and co-ordination of a small project. Other cohorts joined for an eventful 2 weeks of activities at the end of the academic year.

KNOWLEDGE TRANSFER

Working in teams within and across year groups and courses; MSA students participate in peer to peer learning. In addition, collaborators, participants and students engage in the transfer of tangible and intellectual property, expertise, learning and skills.

LARGE SCALE

This year approximately 550 students from 4 cohorts in MSA have worked on 35 projects with partners.

QUESTIONS

For questions about MSA LIVE please contact the MSA LIVE team:

msalive@mmu.ac.uk

BLOG

live.msa.ac.uk/2022

SOCIAL

#MSALive22

@msa.live.22

@TheMSArch

@MLA_TheMSArch

WEBSITE

www.msa.ac.uk