

MANCHESTER SCHOOL OF ARCHITECTURE

Group 22
MUD Buddy



Visit msa.ac.uk for more information



**MSA
LIVE 22**

Team

Harry Charalambous (M.Arch 01)

Shan En Lin (M.Arch 01)

Connor Meighan (M.Arch 01)

Lewis Inman (M.Arch 01)

Kutenda Naleli Murima (BA 01)

Benjamin Bello-Mendoza (BA 01)

Beth Dickinson Macrae (BA 01)

Lok Lam (BA 01)

Rabiyndra Ramachandren (BA 01)

Alexandra Cristina Iordache (BA 02)

Han Xu (BA 02)

Mathilde Stone (BA 02)

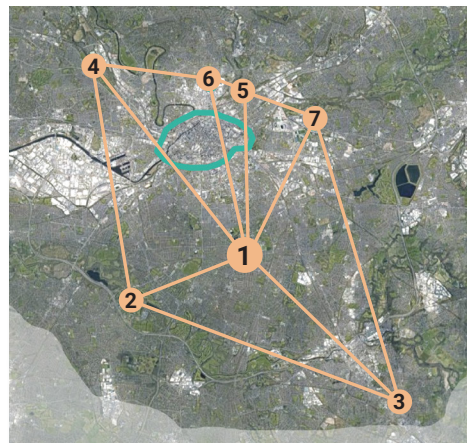
Yinuo Zhang (BA 02)

1. Platt Fields Market Garden
2. Pankhurst Plot Community Garden
3. The Landing
4. Mona Street Community Garden
5. PATCH NOMA
6. Ridgeway Street Community Garden
7. TEMA

Partners

MUD are a non-profit organisation dedicated to changing our food production and distribution system by using unwanted public land to grow food for its surrounding communities. Officially started in 2019, Manchester Urban Diggers are responsible for seven community gardens (shown below) which offer a range of services, from workshops and events to social prescribing sessions, that allow volunteers to get involved with the growing of their food.

MUD are advocates for food sovereignty, education and community engagements and now play a crucial role in communities, that benefit from the biodiversity they have created, and the wide range of products they grow. Organisations like MUD play a pivotal role in Manchester's climate change response as they highlight the role that urban gardening can have in building more resilient and sustainable cities. MUD only use organic growing methods and have improved local biodiversity and soil health, and have brought communities together over the growing and sharing of food.



MUD MANCHESTER
URBAN
DIGGERS

Agenda

MUD Buddy

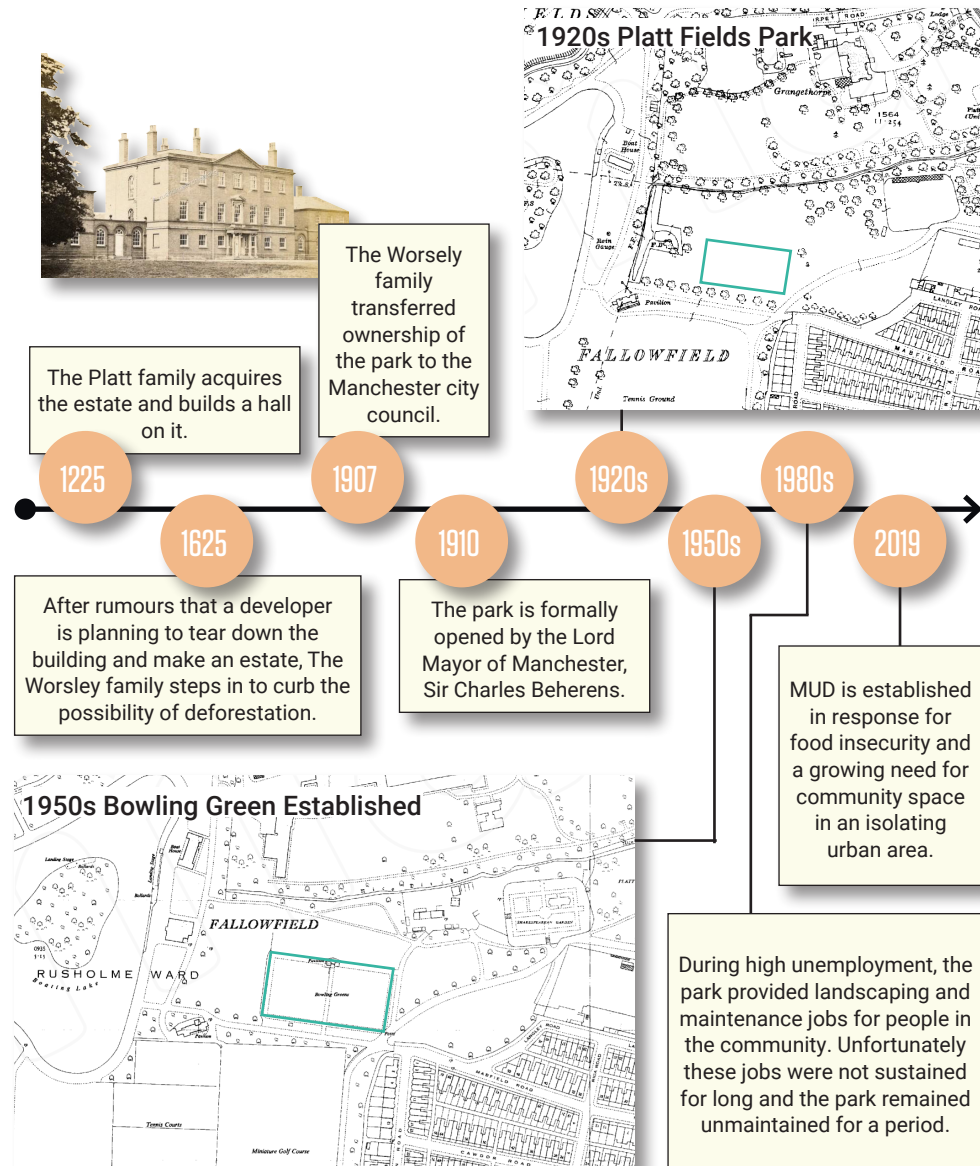
MUD Buddy is a student-led collective created to aid MUD's work at one of their community garden in Platt Fields. MUD has an ambition to expand their current kitchen, set for regeneration this summer. Therefore, our MUD Buddy team aims to develop a complementary structure, to accommodate multi-use facilities including indoor dining, garden and workshop space. The expansion will aid financial stability by providing food services all year round, specifically during cold winter months.

The new structure should host seating for approximately 40 people. The collaborator's at MUD would like indoor garden facilities to be incorporated into the design to create an indoor-outdoor feel. The community market garden is an NHS provider, where people are referred to improve their mental health and well-being. The garden therefore hosts workshop events - inspired by the 'men shed' and 'women shed' concept to both bring the local community together and help improve general health and well-being for garden users.



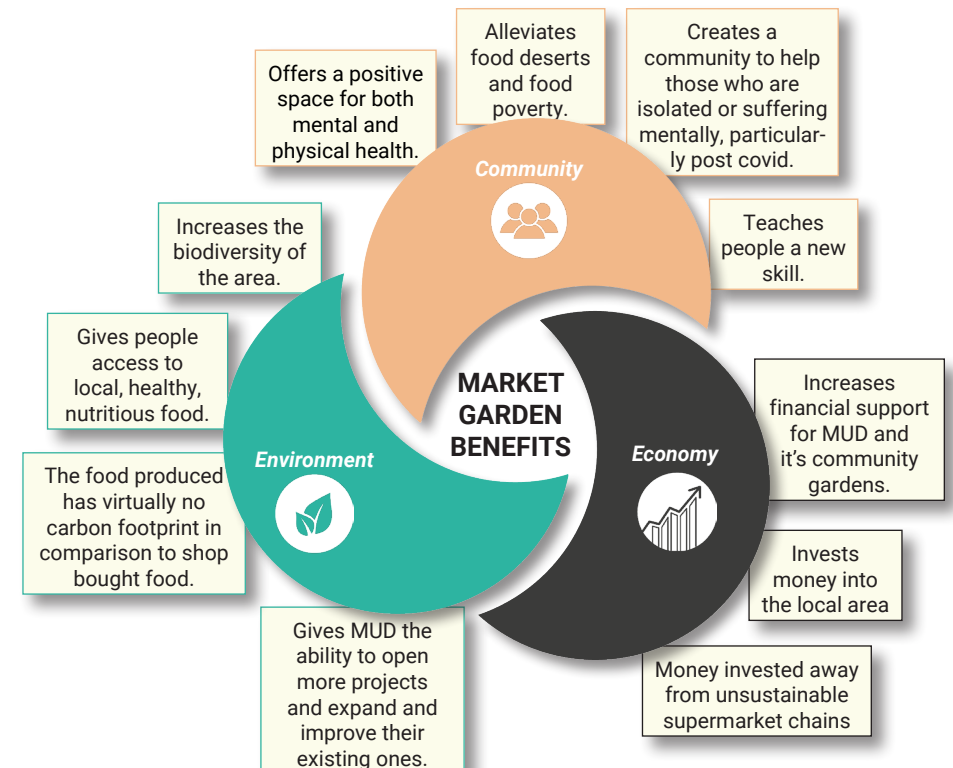
Background Research

Platt Fields Market Garden - Site History



Communal Gardening Context

MUD are dedicated to finding solutions to the problems we have with our local food systems. Including; advocating for food sovereignty, being a member of the Community Supported Agriculture (CSA) Network, providing educational services and growing fruit, vegetables and herbs to make available to the local community. We always use organic growing methods and improve local biodiversity and soil health wherever we grow.



Site Analysis



The site is located in Platt Fields Park in the south-east of Manchester's city centre. There is a Lake in the middle of the park and surrounding the site has a high green coverage. The most common type of building surrounding the site is residential, followed by public buildings, for example schools and churches. In order to reach the site, people mainly drive their own cars or take a bus.



Geography Analysis

- Site
- Lake
- Grass
- Trees



Functional Analysis

- Public buildings
- Residential buildings

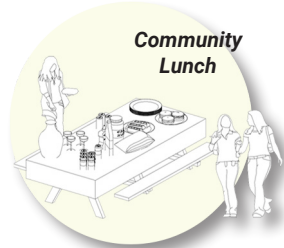


Transport Analysis

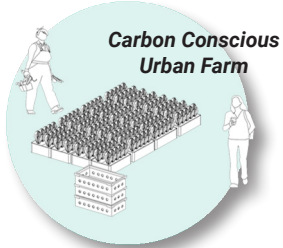
- Main road
- Bus stop

Developing the Brief

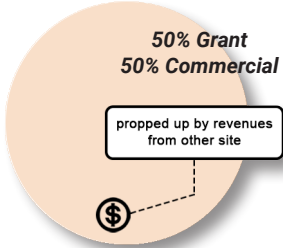
Prompt:



Socially Sustainable

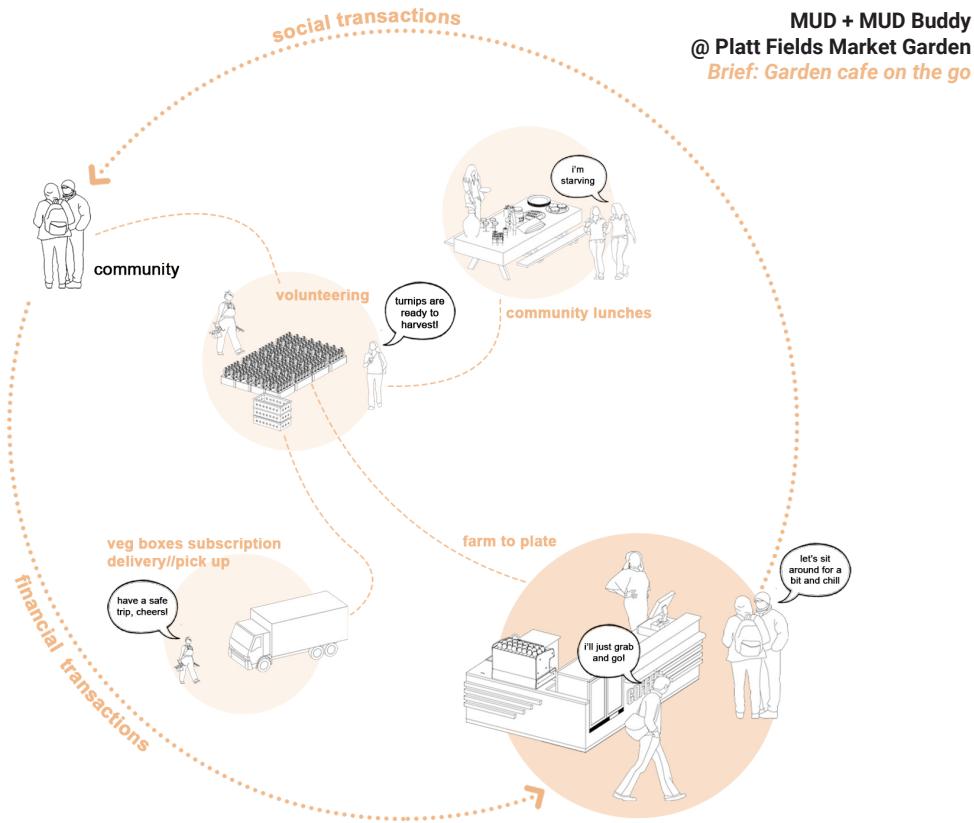


Environmentally Sustainable



Financially Unsustainable
How to be financially sustainable?

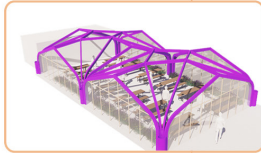
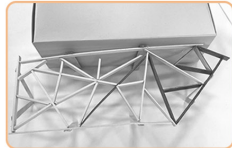
Circular economy to support social investments:



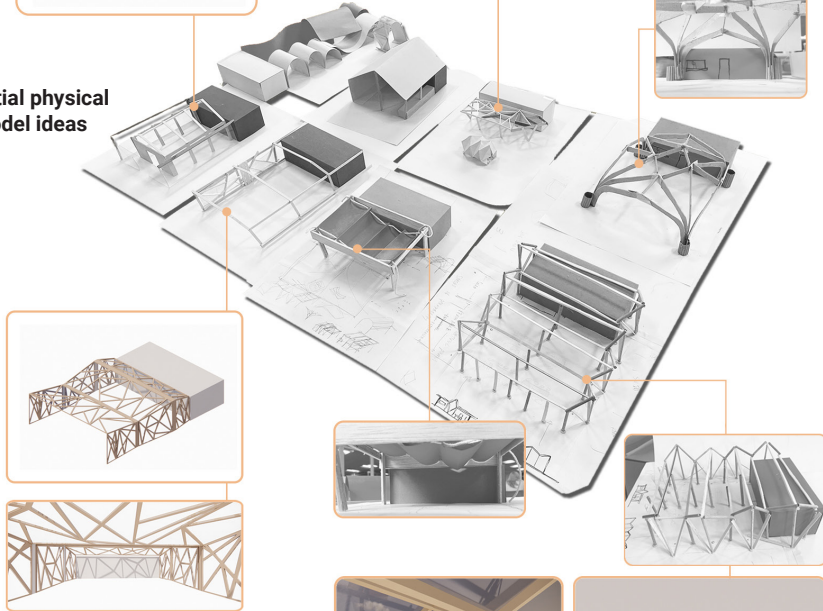
MUD + MUD Buddy
@ Platt Fields Market Garden
Brief: Garden cafe on the go

Design Development

2 Developing ideas using CAD softwares



1 Initial physical model ideas



Our design development began by creating physical paper models to communicate our initial ideas. We then developed four of these using CAD softwares which we showed to the collaborator at the focus group. After feedback, we developed one design (shown at the bottom right of this page) to pursue for our final design.

Focus Group Review

As part of design development, we planned a midway review to show the collaborators and MUD volunteers our design ideas. The focus group enlightened us on information we hadn't considered, from planters, flooring to facade designs.



Design Development

Planter Options



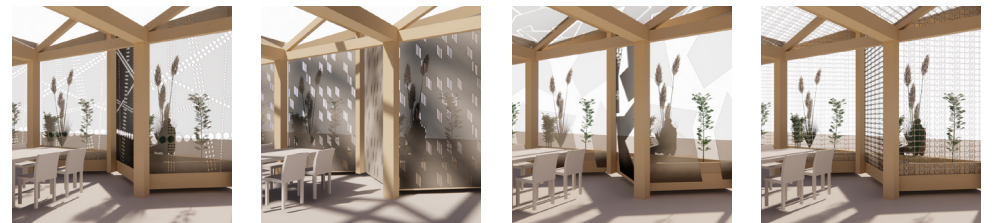
Options designed to compliment chosen structure, incorporating planting into design.

Roof Structure Options



Various roof designs using different structures.

Perforated Facade Options



Perforated mesh facade ideas, inspired by the MUD agenda, used for solar shading.

The Master Plan

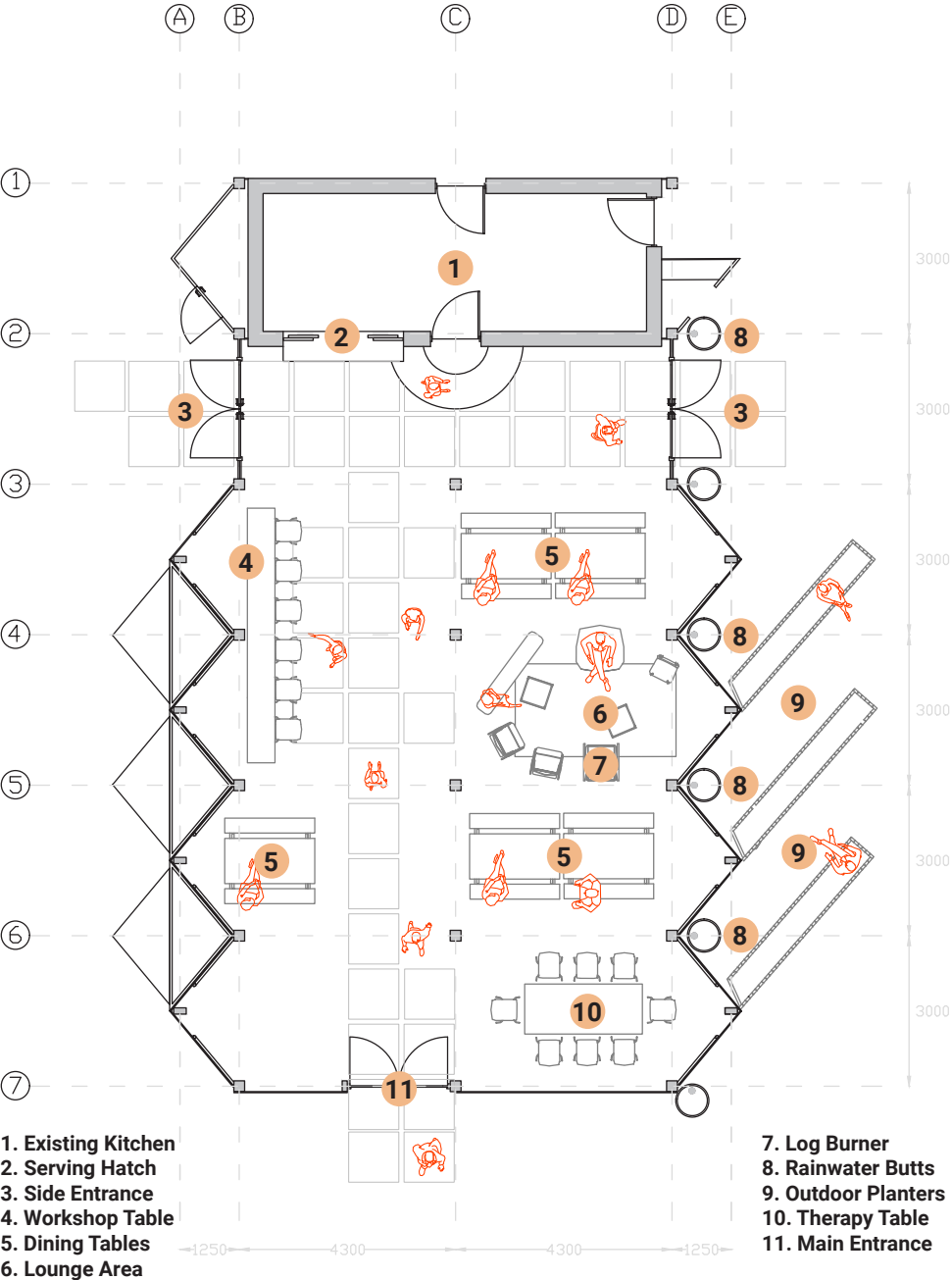
The master plan shows the proposed design within full site context. The design also incorporates an existing wheelchair accessible pathway development which connects directly to the building's openings.

The structure is an extension to the existing brick house building which will accommodate new kitchen facilities. The structure is inspired by orangerys to create a light interior to create calming internal spaces.



Plan

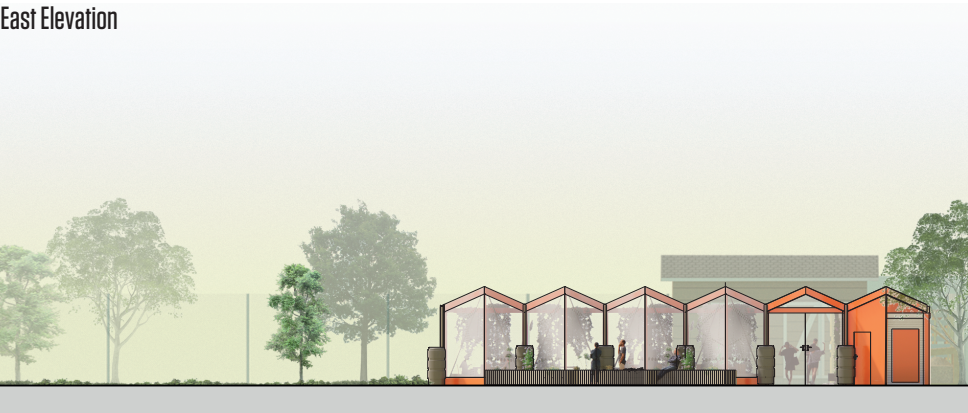
Final floor plan showing internal arrangement and structural grid information.



Elevations

Elevations showing design within site context.

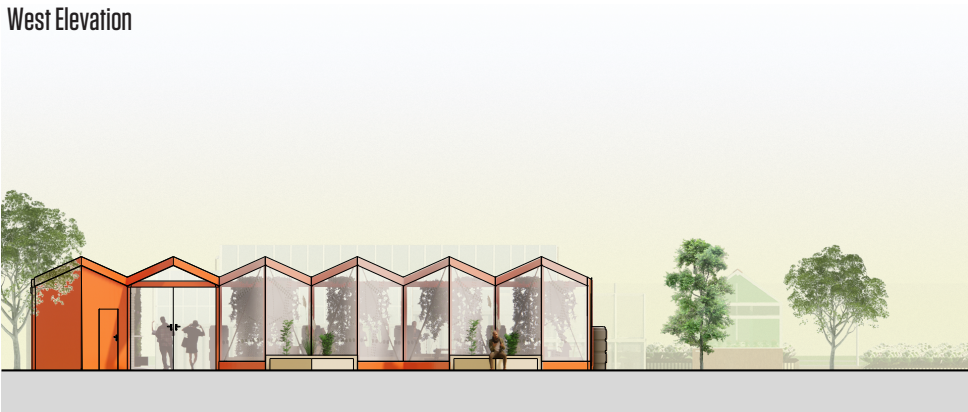
East Elevation



South Elevation



West Elevation



Axonometric View



Key Views



Internal Visual 1

Perspective view as you walk in through the main entrance, showing the light, social space with food serving hatch at the end connecting to the existing kitchen.



Internal Visual 2

View taken from the food serving hatch, showing the glass roof design to allow maximum sunlight to allow plants to grow indoors.



External Visual 1

Perspective view of the outdoor planters integrated into design, also showing the chosen perforated mesh facade used for solar shading.



External Visual 2

Side entrance view showing how the new structure incorporates the existing brick house building, concealing the existing brick with a new, modern facade.

ABOUT

Each year the MSA LIVE programme unites M Arch. year 01 with B Arch. year 01 and 02 and M Land. Arch 01 in mixed-year teams to undertake live projects with external partners to create social impact.

LIVE PROJECTS

All MSA LIVE projects are live. A live project is where an educational organisation and an external partner develop a brief, timescale, and outcome for their mutual benefit.

SOCIAL IMPACT

All MSA LIVE projects have social impact. Social impact is the effect an organization's actions have on the well-being of a community. Our agendas are set by our external collaborators.

EXTERNAL PARTNERS

MSA LIVE projects work with many organisations: charities, community groups, social enterprises, community interest companies, researchers, practitioners and educators.

STUDENT-LED

Our MSA masters students take the lead in the project conception, brief development, delivery and co-ordination of a small project. Other cohorts joined for an eventful 2 weeks of activities at the end of the academic year.

KNOWLEDGE TRANSFER

Working in teams within and across year groups and courses; MSA students participate in peer to peer learning. In addition, collaborators, participants and students engage in the transfer of tangible and intellectual property, expertise, learning and skills.

LARGE SCALE

This year approximately 550 students from 4 cohorts in MSA have worked on 35 projects with partners.

QUESTIONS

For questions about MSA LIVE please contact the MSA LIVE team:

msalive@mmu.ac.uk

BLOG

live.msa.ac.uk/2022

SOCIAL

[#MSALive22](https://twitter.com/msalive22)

[@msa.live.22](https://twitter.com/msa.live.22)

[@TheMSArch](https://twitter.com/TheMSArch)

[@MLA_TheMSArch](https://twitter.com/MLA_TheMSArch)

WEBSITE

www.msa.ac.uk