

MANCHESTER SCHOOL OF ARCHITECTURE



Community Calls!

We are a student-led team working collaboratively with Hive Projects, ARUP, Sheppard Robson Architects, RSK & Manchester College Film to develop an exciting new Village Green, integrated into a 5-stage master plan for North Manchester General Hospital. Community Calls' primary aim is to understand the user experience requested for the new Village Green; therefore, we will be interviewing several key stakeholders and community groups of the surrounding area to produce a short film documentary of the design process, with their view and opinions providing us with a catalyst for the final design!

Community Calls!

Skills

Throughout this workshop, we will be teaching and displaying the benefits of rapid design prototyping, the benefits of public feedback and why user experience should be at the forefront of every design. Students will develop skills in digital modeling, InDesign, Photoshop, and key rendering programs to produce high-quality photo-realistic imagery whilst having the chance to design the Village Green at the community workshop!

Team

Abigail Smart
Omkar Sanjay Salvi
Jasmine Turner
Chang Liu
James Jones

Visit msa.ac.uk for more information



**MSA
LIVE 22**

Team

Abigail Smart (M Arch 01)

Chang Liu (M Arch 01)

James Jones (M Arch 01)

Jasmine Turner (M Arch 01)

Omkar Salvi (M Arch 01)

Haneen Alhoqail (BA 01)

Alicia Elliott (BA 01)

Htein Lin (BA 01)

Niamh O'Neil (BA 01)

Soham Sengupta (BA 01)

King Yin Preston Chui (BA 02)

Man Hei Sui (BA 02)

Rana Pauliana Budianta (BA 02)

Tamar Lang (BA 02)

Yuet Ka Wu (BA 02)

Partners

Hive Projects

Our primary external partner Hive-projects, work with clients to develop and implement project social values. They strive to deliver expert, client-focused advice for property and construction projects and have an innovative and sustainable approach to builds.

Sheppard Robson Architects

Sheppard Robson is one of the UK's most established architectural practices, with a reputation for thoughtful and responsible designs. The design team at Sheppard Robson is working on the Masterplanning of the NMGH, which includes our Village Green.

Manchester Film School

Manchester Film School are a practical and hands-on school for those wishing to pursue a career in the Film & Television industry.

Manchester University NHS Foundation Trust

Manchester University NHS Foundation Trust, which runs North Manchester General Hospital, is working with NHS partners and Manchester City Council to deliver the exciting transformation of the hospital site which includes the Village Green.



Agenda

Community Calls!

We are a student-led team working collaboratively with Hive Projects, ARUP, Sheppard Robson, RSK & Manchester College Film to explore potential design options for the exciting new Village Green. This was proposed in the Strategic Regeneration Framework for the North Manchester General Hospital Site. Community Calls' primary aim is to begin to explore ways in which the proposed Village Green could be designed and ultimately used by the community; therefore, we will be interviewing several key stakeholders and community groups of the surrounding area to produce a short film/documentary of the design process, with their view and opinions which we will share with the NHS to feed in to emerging designs.

This includes a community design workshop, we will be teaching and displaying the benefits of rapid prototyping, the benefits of public feedback and why user experience should be at the forefront of every design. Students will develop skills in digital modelling, InDesign, Photoshop, and key rendering programs to produce high-quality photorealistic imagery whilst having the chance to work with Manchester College Film at their studio, assisting with production of the short film!

Scan here to watch our video!

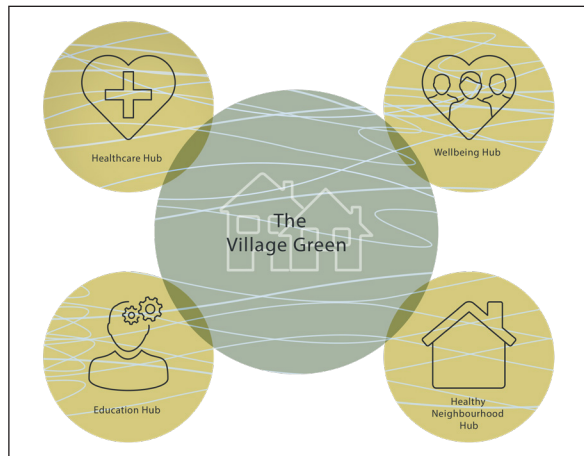
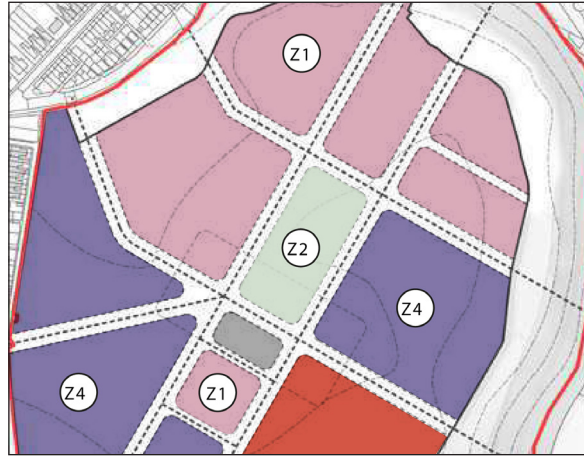


https://www.youtube.com/watch?v=0w9UyDYh7Mo&ab_channel=MSALIVE09

Video Link

Project Brief

The entire NMGH Masterplan will comprise of a Healthcare Hub, a Well-being Hub, an Education Hub and a Healthy Neighbourhood Hub. And in the heart of all these Hubs will be the Village Green. This will become a high quality outdoor space, acting as a focal point for the campus. It will feature greens spaces, water features, and patients, staff visitors and residents will use the green as a place for relaxation, meditation and meeting.



The Village Green should be a publicly accessible open space for patients, staff, visitors and members of the wider community. The Village Green would be at the heart of a new immersive healing landscape. With a core area similar to the central green space at Manchester Royal Infirmary, the Village Green should be focal point of the redevelopment around which all of the hospital functions are located. The space should allow visitors to orientate and navigate to different locations within the site. A network of clear, attractive and safe walking routes should be incorporated into the space for use by recuperating patients, staff, patients and the local community. Paths should be of adequate width to accommodate patients in beds and wheelchairs.

Session Plan

Community Workshop

Day 1- Community Workshop at Crumpsall Community Hall

Identifying Characters...

Day 2- Gathering data and creating Profiles

Creating Idea Video

Day 5/6- Undergrads working on Profiles

A SPA

Day 4- Interview with David Baldwin from Sheppard Robson Architects

Precedent Study

Day 3- Precedent study for Illustration

Final Publishing

Day 7- Starting Final Publication Work.

A MFT

Day 8- Interview with Warren Duffy from NMGH

Final Video and Publication

Day 10- Final Video and Publication Exporting and submission

Final Video Editing

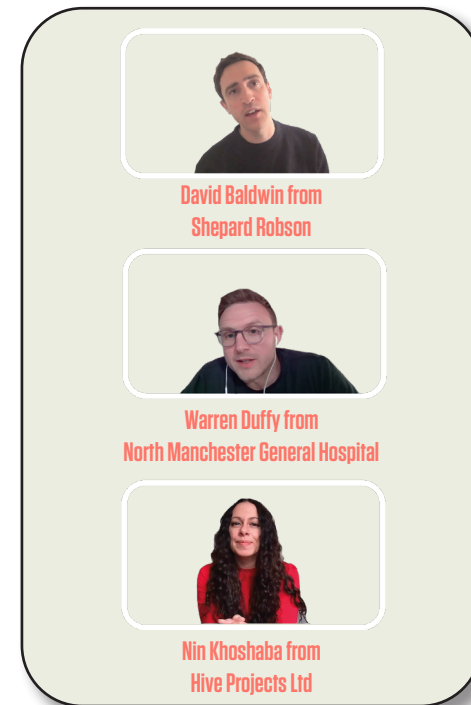
Day 9- Final Video Editing

Workshop Summary & Output

The workshop was held at Crumpsall Community Hall on the first day of the MSA Live

The workshop's main objective was to get maximum inputs from the Community of crumpsall about Green Spaces. A varied demographic was present at the workshop, retired people of ages 65 and above, working class professionals, University students and Primary School children. This varied demographic helped us achieve a community output that covered all aspects of design ; starting from kids' park to sensory garden and seating for the senior citizens.

The retired people elaborately discussed their ideas and views with Community Calls team members Abigail Smart and Jasmine Turner. These views led to a solid problem identification plan. Another visitor at the event was University student studying Bachelors in Education who was specifically interested in sensory garden design since she had been studying about its importance. Children present at the workshop made equally important contributions through their creative skills.



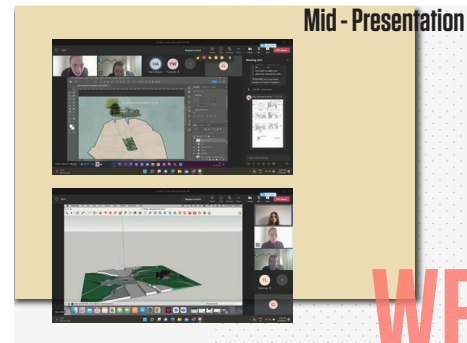
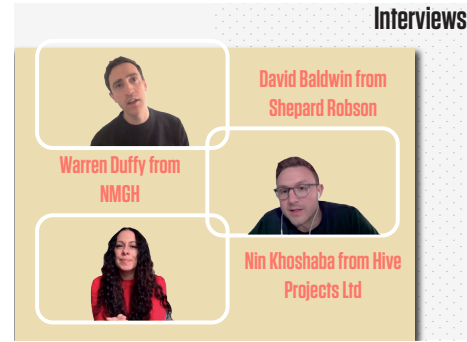
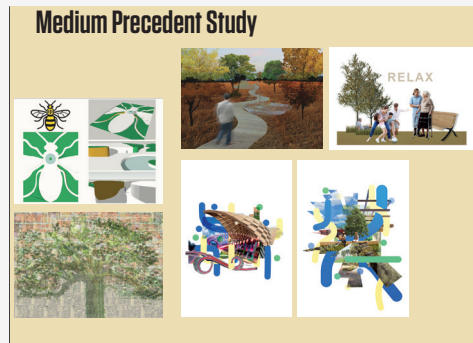
Making community profiles

After the workshop with the community members, we collated the feedback and produced 10 profiles for each of the individuals. The 10 profiles, had their own desires for the proposed community green space. The profiles were then distributed to the undergraduates as 'clients'.

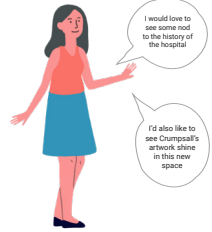
Interviews

We conducted Interviews with members of the Strategic Regeneration Framework team for the North Manchester General Hospital Site. These interviews discussed the regeneration project and the village green, and clips from these are included in the short film we have made as a team.

Project Development - Daily Blog



MSA Student work



I would love to see some nod to the history of the hospital.

I'd also like to see some nod to the history of the hospital.

A Park for Sue

King Yin Preston Chui

Sue wants to make sure people still know of the hospital's past, she also helps out with litter clean ups around the community. This design caters for her needs by providing plenty of seating, exhibition areas, shelter, and spaces for nature to grow. This creates a welcoming atmosphere for the local community and the hospital workers.



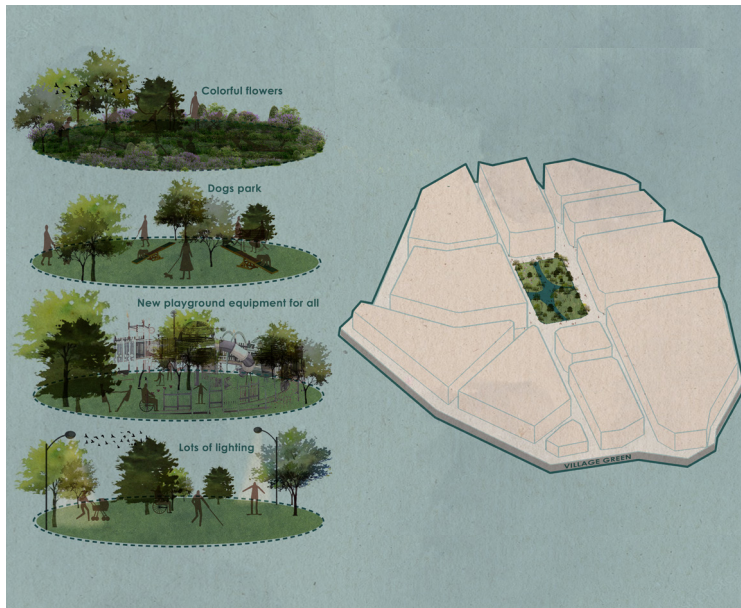
I would love to see colourful flowers.

I want to see new exciting playground equipment for my baby too.

A Park for Ayesha

Haneen Hamad Alhoqail

Ayesha is a 29 year old parent, she has 5 children. She looks after the children full time and uses her local park regularly. This design caters for her needs by providing lots of lighting, a playground for various ages, and spaces for dogs



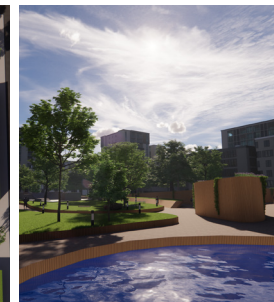
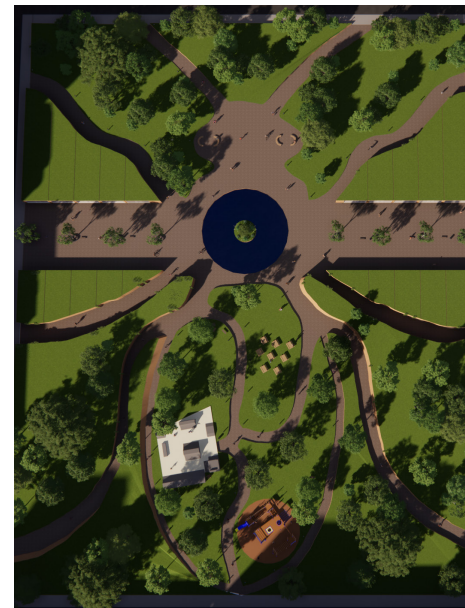
I would love to have a picnic area in the park so I can spend time with all my friends and family.

I like to feel safe in a village green, lighting is important.

A Park for Suhaylah

Siu Man Hei

Suhaylah is a 34 year old parent, she has 1 teenage child, she spends her evenings in the park having picnics and going for walks. This design caters for her needs by integrating food stalls, helping to promote local cultures and diversity, and also has communal areas, seating areas and bicycle paths, enabling a greater sense of freedom, happiness and community in an urban landscape.



Having somewhere to exercise is very important to me, I walk everyday.

I would love to have a coffee in the park and meet friends.

A Park for Kate

Alicia Eliiot

Kate is a 43 year old single parent, she has two young children. She works part time and does exercise every day. This park caters to her by creating a park centred around the Manchester bee to provide walking routes and cafés.





We should protect the wildlife by having insect gardens

I want to see lots of shelter as it rains alot in Manchester

A Park for Jack and Sophie

Rana Pauliana Budianta

Jack and Sophie, are a working couple living in Crumpsall. I have designed shelter seats with a canopy. This seating with canopy is important for people to be able to relax and enjoy the village green, even when it is raining. This atmosphere makes it perfect for both the general community and the hospital workers.



I want a place on the hospital grounds which respects those who have passed here

I would love to see colourful flowers.

A Park for Mary

Htein Lin

Mary has her own allotment which she enjoys but is hard work, and misses seeing more flowers in shared community areas. Having sensory elements such as sight, tactile, scent and acoustic aspects are crucial in the design, as well as holes in the walls to represent loss.



I want a better space for my young children to play and enjoy

I want a space which will be calming too.

A Park for Jasmine

Tamar Lang

Jasmine, asked for a green space that provides playground equipment for her children and a zen-like space filled with a plethora of flowers and Japanese gardens for the residents and hospital workers.



I want the park to feel safe in the day time and be protected at night

I would love to see some sort of water feature. I find the noise it makes very soothing!

A Park for Jack

Niamh O'Neill

Jack does litter clean ups in his free time, and enjoys nature in his own garden and would like those without gardens to enjoy that too. This design caters for his needs by having lots of seating, and water features for a relaxing environment



A Park for Jasmine's Kids

Yuet Ka Wu

Jasmine's children are primary school aged kids are creative and love nature, and attend lots of after school clubs. Bringing this creativity out into nature will help them flourish. This design caters for their needs by integrating nature and animals. Kids can play in nature and interact with animals in a petting zoo, which will help their mental health along with any workers at the hospital.



MSA LIVE SUMMARY

All of us have throughly enjoyed the experience of MSA Live and hope this project can help the Village Green design team with some ideas for the space based on the local communities wants and needs.

"MSA live helped me to be more creative."

- Niamh O'Neili

"The MArch students have been helpful in giving feedback, checking that we keep the community in mind"

- Rana Pauliana Budianta

"I have learned the importance of engaging with the community and their needs before designing for them."

- Haneen Hamad Alhoqail

"This project has allowed me to build my rendering and animation skills."

- King Yin Preston Chui

"It is a very productive journey and I've learnt a lot."

- Yuet Ka Wu

Scan here to watch our video!



Video Link

https://www.youtube.com/watch?v=0w9UyDYh7Mo&ab_channel=MSALIVE09



ABOUT

Each year the MSA LIVE programme unites M Arch. year 01 with B Arch. year 01 and 02 and M Land. Arch 01 in mixed-year teams to undertake live projects with external partners to create social impact.

LIVE PROJECTS

All MSA LIVE projects are live. A live project is where an educational organisation and an external partner develop a brief, timescale, and outcome for their mutual benefit.

SOCIAL IMPACT

All MSA LIVE projects have social impact. Social impact is the effect an organization's actions have on the well-being of a community. Our agendas are set by our external collaborators.

EXTERNAL PARTNERS

MSA LIVE projects work with many organisations: charities, community groups, social enterprises, community interest companies, researchers, practitioners and educators.

STUDENT-LED

Our MSA masters students take the lead in the project conception, brief development, delivery and co-ordination of a small project. Other cohorts joined for an eventful 2 weeks of activities at the end of the academic year.

KNOWLEDGE TRANSFER

Working in teams within and across year groups and courses; MSA students participate in peer to peer learning. In addition, collaborators, participants and students engage in the transfer of tangible and intellectual property, expertise, learning and skills.

LARGE SCALE

This year approximately 550 students from 4 cohorts in MSA have worked on 35 projects with partners.

QUESTIONS

For questions about MSA LIVE please contact the MSA LIVE team:

msalive@mmu.ac.uk

BLOG

live.msa.ac.uk/2022

SOCIAL

#MSALive22

@msa.live.22

@TheMSArch

@MLA_TheMSArch

WEBSITE

www.msa.ac.uk