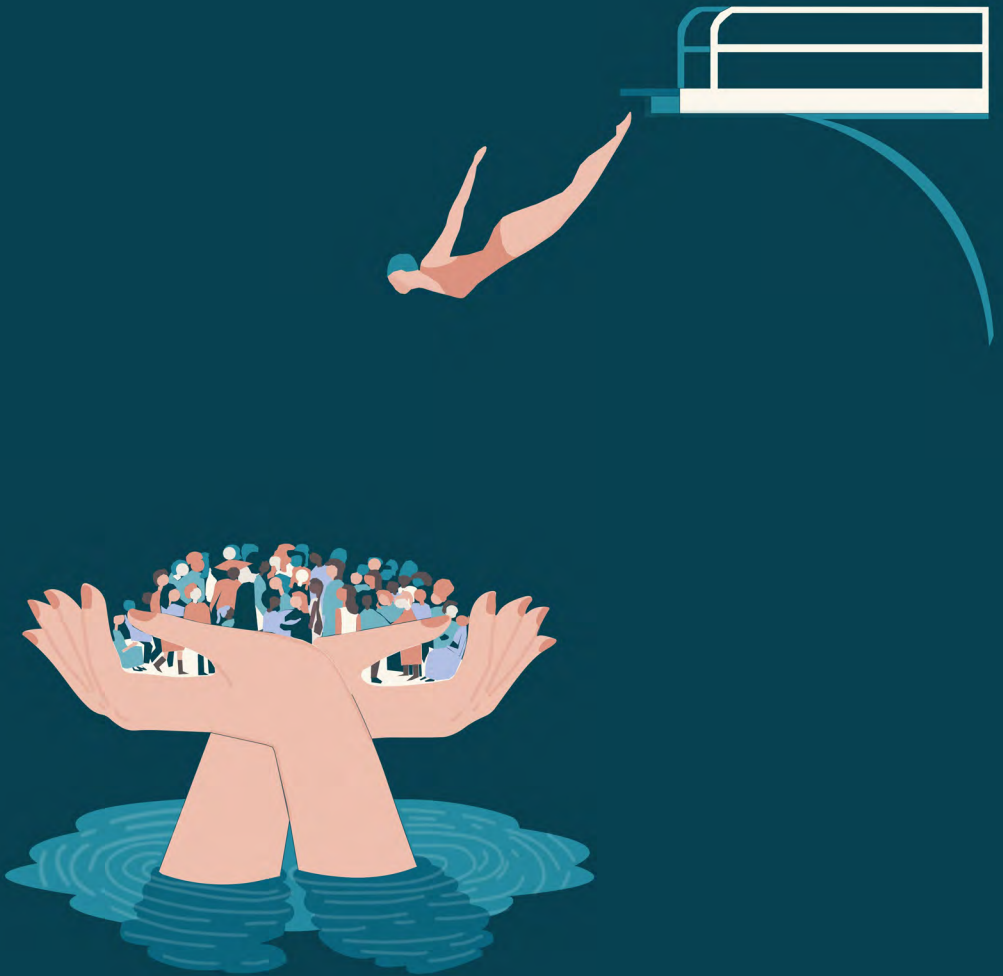


MANCHESTER SCHOOL
OF ARCHITECTURE

IN THE OCEANS OF DIVERSITY



Visit msa.ac.uk for more information

Team

Christina Markaki (M Arch 01)

Effimia Athanasakopoulou (M Arch 01)

Giorgos Porakos (M Arch 01)

Nadezhda Yordanova (M Arch 01)

Nuwar Darwish (M Arch 01)

Mohammed Amine Mouaqit (M Arch 01)

Akeefah Tasnia (BA 01)

Ashna Chakraborty (BA 01)

Hadiza Tafida (BA 01)

Ruxandra-Miruna Neacsu (BA 02)

Faatimah Mubinulhaque Ali (BA 02)

Letitia-Maria Boeru (BA 02)

Lucy Hetherington (BA 02)

Partners

Building Bridges Pendle (BBP) is an organization based in the centre of Nelson for over 20 years, recognised and respected for the delivery of cohesion work at a borough-wide level. The roots of the organization are firmly in community activism and development where core work targets grassroots people in a community setting, either in their neighbourhoods or in local public places.

BBP work with young people tends to take place in Schools but on occasions initiatives have been brought into a community setting to connect intergenerational aspirations for cross-cultural harmony.

Building Bridges Pendle aims is to improve community relations and community cohesion by raising awareness and understanding amongst people about different cultures; promoting common values; and helping people to develop friendships that cross cultural and community boundaries. Developing and sustaining their work for nearly two-decades, their history, track record, profile and current work has firmly marked their position as an organisation committed to ground-breaking and innovative work in the field of Education, Interfaith and Community Cohesion

Agenda

In the Oceans of DIVercity

Our group is part of a process of exploring ideas for the redevelopment of Building Bridges Pendle offices ground floor area. Our contribution aims to look into different design ideas and create a multifunctional space able to accommodate community events and enterprise activities.

The proposed redevelopment is part of a wider regeneration plan for the area, as Nelson has been one of the towns to receive a Town Centre Development fund and the Future High Street development grant. This will have a significant impact on the area and therefore, the case for social regeneration and community development is central to the proposals that will be part of this redevelopment.

As an organization that have a functional role and reputable history for community development work in the area, the proposal for BBP ground floor must not only consider the spatial needs of our partners but also how this space will become a key place for Nelson's multi-cultural community raising the profile of the town centre and aspire local residents in celebrating identity, culture and heritage. This required from our group to discuss and share ideas with people from Nelson community, understanding their needs and vision for the area.

Spatially, the design must reflect the functional requirements of the yearly events and the daily activities that are organized from BBP, creating a vibrant community hub. This hub must illustrate the tradition, cultural and social trends of local communities and provide them with a place for their evening and weekend interactions.

Exploring the Area

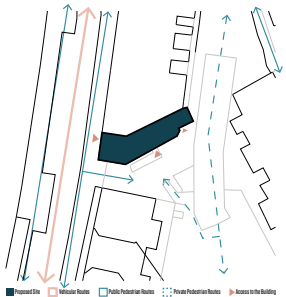
By creating a project for an organization deeply rooted within the local community, reflecting their multi-cultural identity, our team has started developing the project by exploring different aspects of the area and the site.

Through our analysis, we got an understanding of Nelson's town demographics. This show is mainly a middle-aged, working-class society with people coming mainly from Asia and eastern Europe.

Then we studied the area's heritage, landmarks and activities through buildings usage, before exploring in detail the proposed site in terms of accessibility and public/private areas. This analysis gave us a clear understanding of the area's profile and usage and its outcomes will be beneficial for the development of our proposal.



Local Landmarks



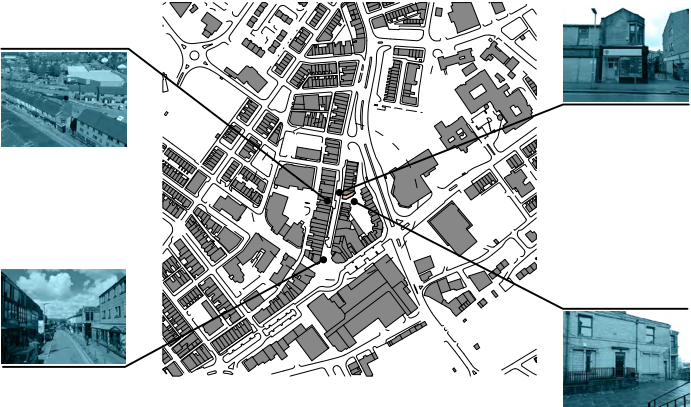
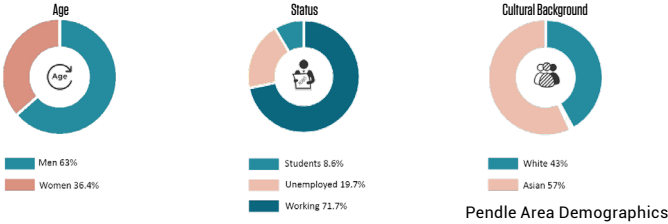
Public & Private Areas



Nelson Town Heritage



Public & Private Areas



The Proposed Site



Buildings Usage

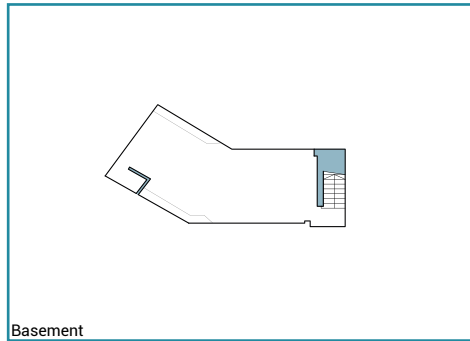
Existing Plans



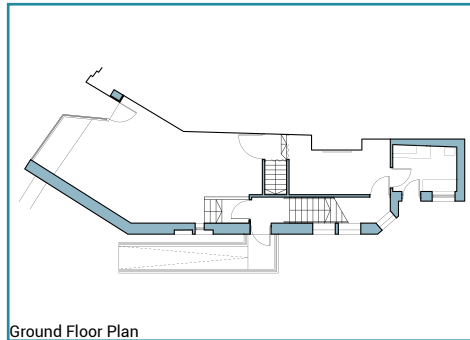
Existing Front View



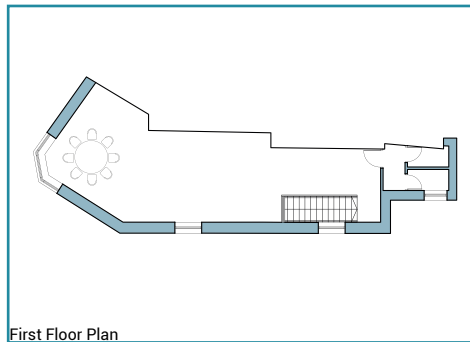
Existing Interior View



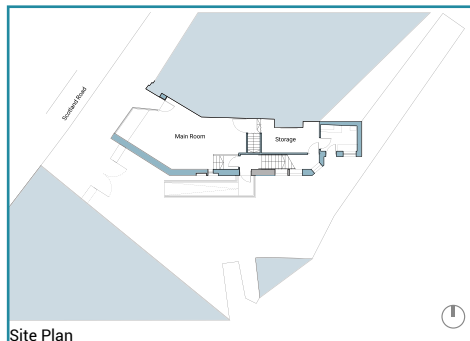
Basement



Ground Floor Plan



First Floor Plan



Site Plan

Conceptual Process

Introduction:

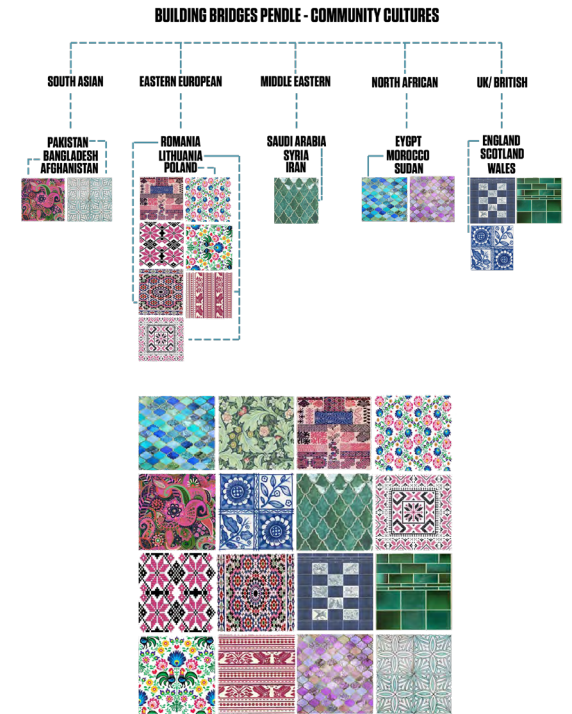
The Concept Process is divided into two categories: Concept Analysis and Physical Interventions. The Concept Analysis (page 7) evaluates the key motif which is the representation of community cultures and faiths within Pendle. On the other hand, the Physical Interventions (pg 8 & 9) focuses on the physical changes made to the existing floor plan catering to elements found in both Concept Analysis and Site Analysis.

Patterns & Tiles

BBPendle is a community of individuals from all over the world. The following drawings show the exploration of cultural identities, focusing on multiple elements such as the food, art and key traditions. Upon research all cultures shared a love for expression in pattern and art, through the use of tiles. Thus the use of these tiles were combined to create a pattern in itself to enhance a sense of solidarity between all cultures, central in the function of the Community Centre.

Shutters Design

To design the shutters for the entrance we looked at symbolism across different religions and cultures to reflect the multi-faith and culturally diverse charity. Examples of the symbols we looked at are shown on the left, as well how we connected them to create a pattern for the shutters, using the same material as the black metal frame so it ties into the new design for the entrance.



Physical Interventions

External design & openings

Existing ♿

In order to comply with the Building Regulations, we incorporated suitable sanitary accommodation on the ground floor. It shall be used by approximately 30 people and its design is appropriate for disabled users. The stair leading to the back of the building has been replaced with a ramp to create accessible circulation.

Proposed dimensions
Due to requiring space for a wheelchair, accessible toilets need more floor space

2200 mm
900 mm
1500 mm

Minimum requirements

500mm min., 100mm
800mm min.
200mm min.
750mm activity space clear of door swings

Proposed ♿

Circulation
replacing stair with ramp for accessibility purposes

Bathroom

Existing Plan

Main Room
Transition Space
Storage
Vertical Circulation

Proposed Plan

Community Centre
Transition Space
Bathroom
Kitchen
Vertical Circulation

- Abides all fire safety requirements
- Window provides air circulation
- Accessibility
- Closed room
- Two Access points

Interior design & Spatial arrangements

Existing Staircase

Proposed Staircase
Larger Lobby
Reduced Travel Distance
Easier Access to Outdoors
Compliant w/ UK Fire Safety Regs

Existing Plan

Proposed Plan

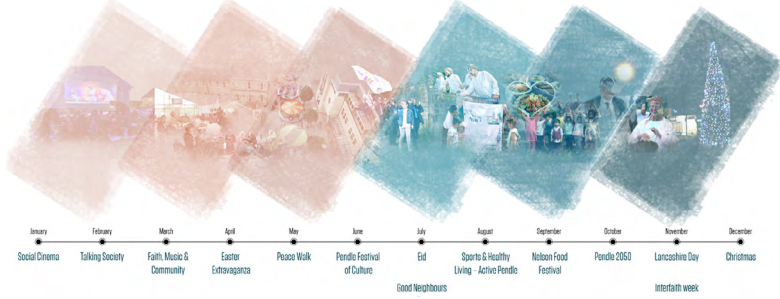
Fire escape distance

Fire escape routes

Fire Safety

Timeframe Exploration

Collage Exploring the Different Events that Need to be Accommodated in our Site



Event Catered Plans

January / Social Cinema



February / Talking Society



March / Faith, Music & Community



April / Easter Extravaganza



May / Peace Walk



June / Pendle Festival of Culture



July / Eid



August / Sports & Healthy Living



September / Nelson Food Festival



October / Pendle 2050



November / Lancashire Day



December / Christmas

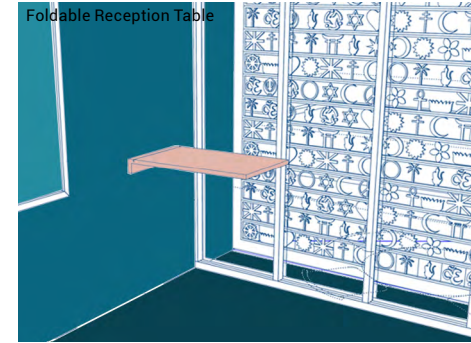


Additional Interventions

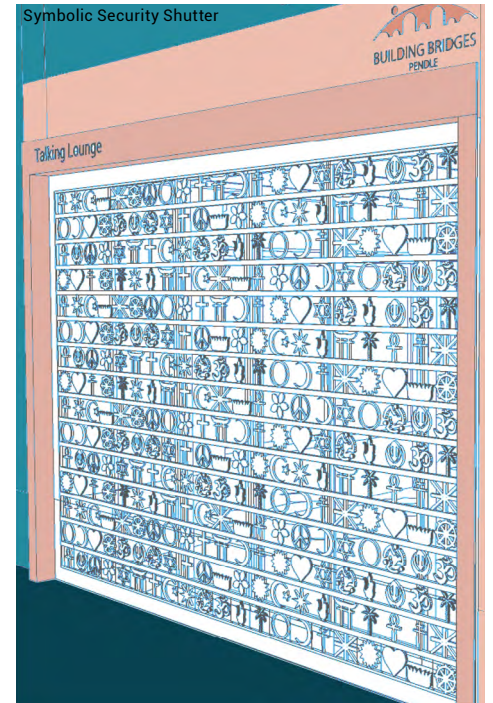
Linear Lighting Adding Depth to the Space



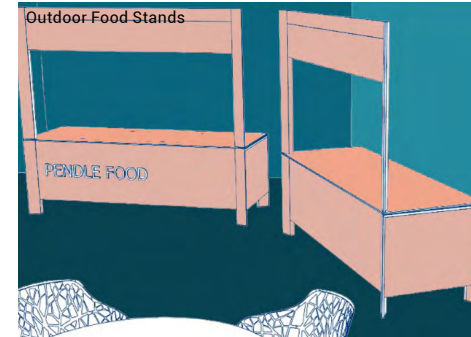
Foldable Reception Table



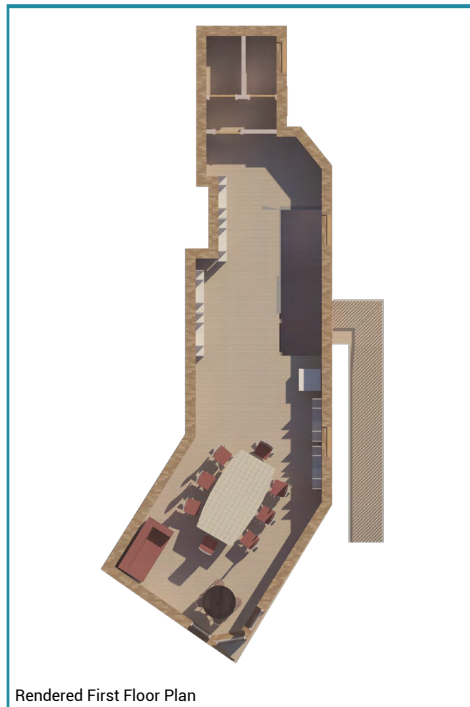
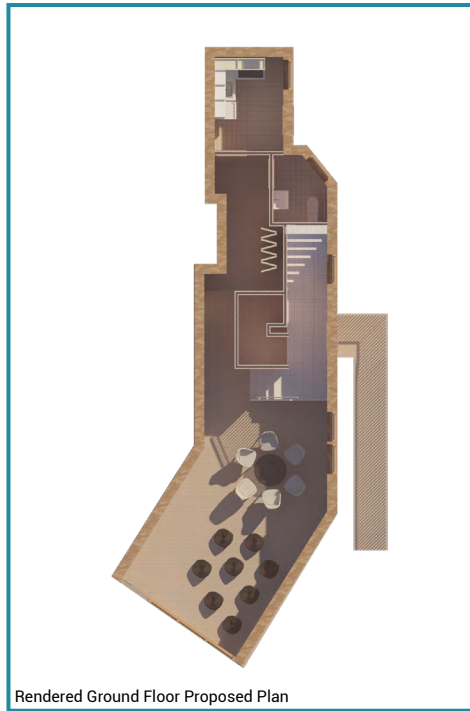
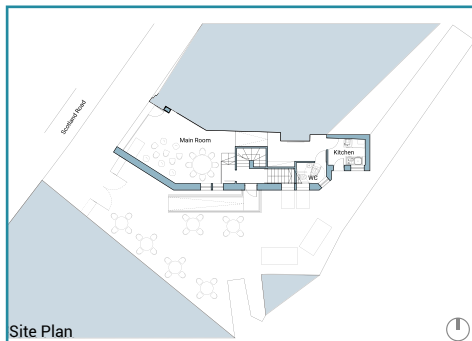
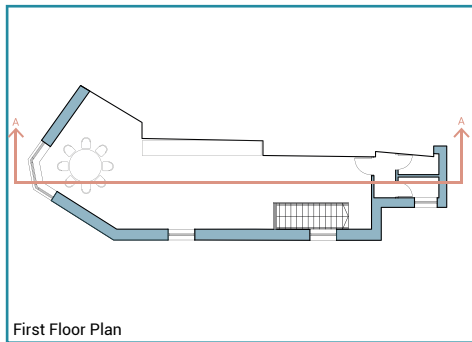
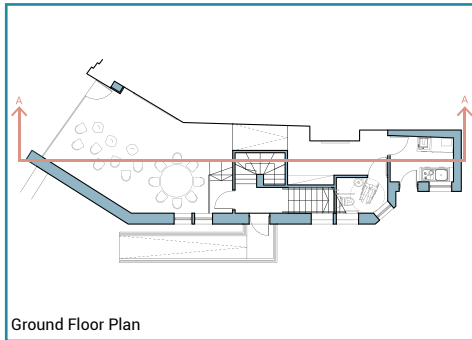
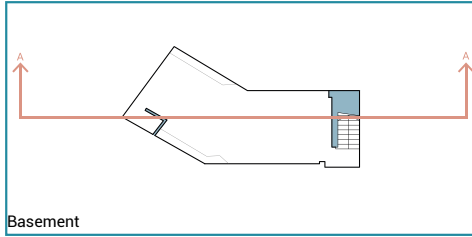
Symbolic Security Shutter



Outdoor Food Stands



Proposed Plans



Section and Elevations



External & Internal Visuals



ABOUT

Each year the MSA Live (formerly Events) programme unites M Arch. year 01 with B Arch. year 01 and 02 and M Land. Arch 01 in mixed-year teams to undertake live projects with external partners to create social impact.

LIVE PROJECTS

All MSA Live projects are live. A live project is where an educational organisation and an external partner develop a brief, timescale, and outcome for their mutual benefit.

SOCIAL IMPACT

All MSA Live projects have social impact. Social impact is the effect an organization's actions have on the well-being of a community. Our agendas are set by our external collaborators.

EXTERNAL PARTNERS

MSA LIVE projects work with many organisations: charities, community groups, social enterprises, community interest companies, researchers, practitioners and educators.

STUDENT-LED

Our MSA masters students take the lead in the project conception, brief development, delivery and co-ordination of a small project. Other cohorts join for an eventful 2 weeks of activities at the end of the academic year.

KNOWLEDGE TRANSFER

Working in teams within and across year groups and courses; MSA students participate in peer to peer learning. In addition, collaborators, participants and students engage in the transfer of tangible and intellectual property, expertise, learning and skills.

LARGE SCALE

This year approximately 600 students from 4 cohorts in MSA will work on 42 projects with partners.

QUESTIONS

For questions about MSA Live 21 contact MSA Live Lead: Becky Sobell:
b.sobell@mmu.ac.uk

BLOG

live.msa.ac.uk/2021

SOCIAL

#MSALive21

@TheMSArch

@MLA_TheMSArch

WEBSITE

www.msa.ac.uk